



ADMINISTRATIVE OFFICE OF THE COURTS
MARYLAND JUDICIAL CENTER
580 TAYLOR AVENUE
ANNAPOLIS, MARYLAND 21401

December 29, 2009

FRANK BROCCOLINA
STATE COURT ADMINISTRATOR
(410) 260-1295 Fax: (410) 974-2066
frank.broccolina@mdcourts.gov

FAYE D. GASKIN
DEPUTY STATE COURT
ADMINISTRATOR
(410) 260-1257 Fax: (410) 974-2066
faye.gaskin@mdcourts.gov

SHARON SAMPSON BALL
Executive Director
Human Resources
(410) 260-1283 Fax: (410) 974-2849
sharon.ball@mdcourts.gov

GRAY BARTON
Executive Director
Office of Problem-Solving Courts
2011-D Commerce Park Drive
Annapolis, Maryland 21401
(410) 260-3617 Fax: (410) 841-9850
gray.barton@mdcourts.gov

PHILIP S. BRAXTON
Executive Director
Judicial Information Systems
2661 Riva Road, Suite 900
Annapolis, Maryland 21401
(410) 260-1000 Fax: (410) 974-7170
philip.braxton@mdcourts.gov

ALLEN C. CLARK, III
Executive Director
Budget & Finance
(410) 260-1579 Fax: (410) 260-1290
allen.clark@mdcourts.gov

DAVID R. DURFEE JR.
Executive Director
Legal Affairs
(410) 260-1405 Fax: (410) 974-2066
david.durfee@mdcourts.gov

RAYMOND MACK
Executive Director
Procurement & Contract
Administration
(410) 260-1410 Fax: (410) 260-1749
raymond.mack@mdcourts.gov

PAMELA CARDULLO ORTIZ
Executive Director
Family Administration
(410) 260-1580 Fax: (410) 974-5577
pamela.ortiz@mdcourts.gov

DIANE S. PAWLOWICZ
Executive Director
Court Research & Development
(410) 260-1725 Fax: (410) 974-2066
diane.pawlowicz@mdcourts.gov

ROXANNE P. MCKAGAN
Manager
Administrative Services
(410) 260-1407 Fax: (410) 974-2066
rocky.mckagan@mdcourts.gov

DEBORAH A. UNITUS
Manager
Program Services
(410) 260-1291 Fax: (410) 974-5577
deborah.unitus@mdcourts.gov

Re: K10-0084-84F; Telephone/Data Wiring for New Charles County District Court House in LaPlata

AMENDMENT # 5

Dear Interested Party:

The Administrative Office of the Courts (AOC) hereby makes the following clarifications/changes to the above referenced Request for Bid.

Due to the need to make clarifications to the specifications, the above referenced solicitation is hereby changed:

Drawings were issued in Attachment Number 1 and Amendment Number 2. The referenced attachments contained some unnecessary drawings.

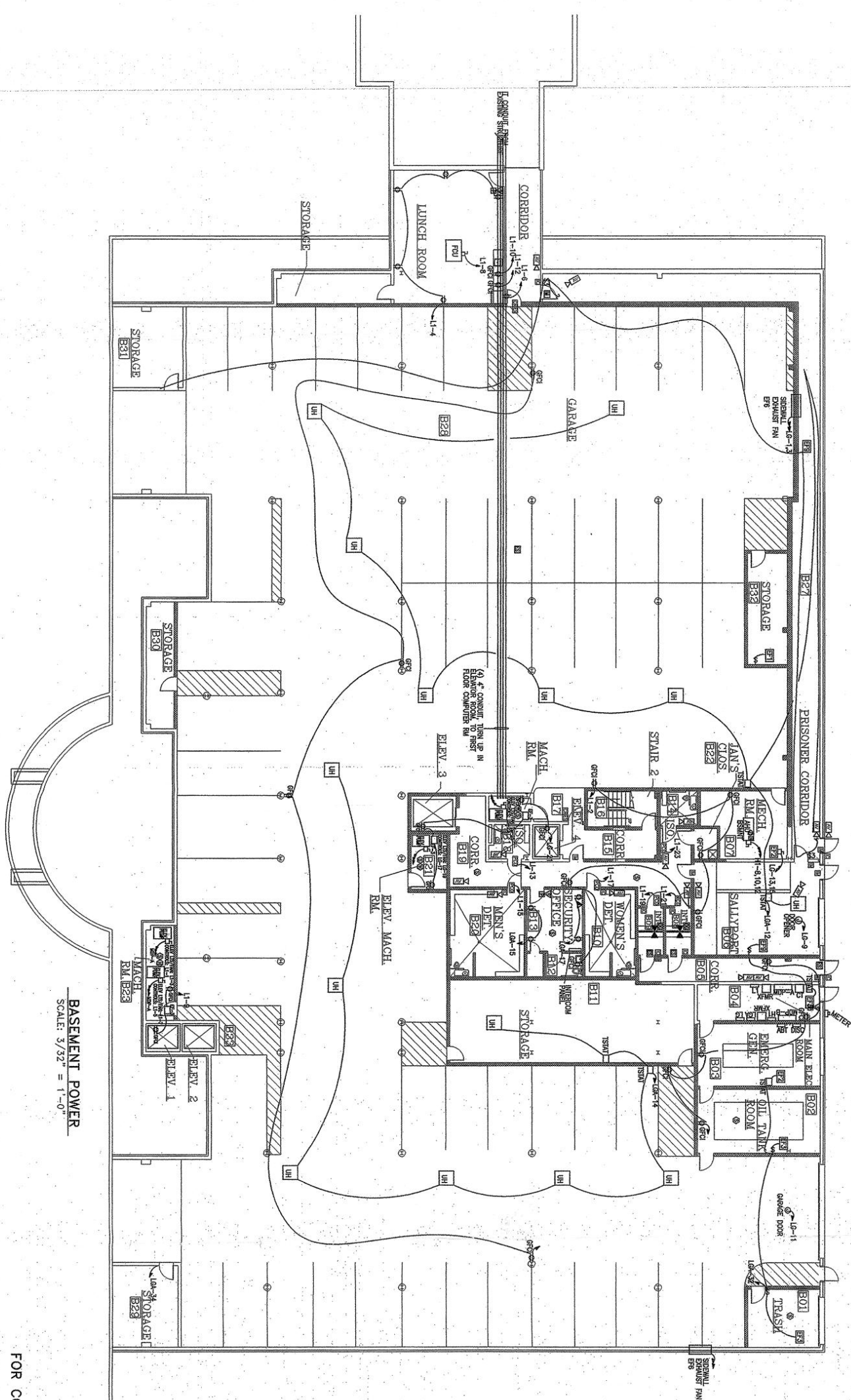
The only drawings needed for bidding purposes are the drawings numbered 901, 902, 903 and 904 and they are attached to this amendment.

Only use these 4 drawings for bidding purposes and disregard attachment number 1 and amendment number 2 .

This is the only change contemplated by this Amendment 5. All other terms and conditions remain the same.

Sincerely,

Karen Hoang
Procurement Specialist



BASEMENT POWER
SCALE: 3/32" = 1'-0"

FOR CONSTRUCTION

ENGINEER'S CERTIFICATION STATEMENT
I, the undersigned, being a duly Licensed Professional Engineer in the State of Maryland, do hereby certify that I am the author of the design and content of the drawings herein and that I am a duly Licensed Professional Engineer in the State of Maryland, License No. 19277, expiring on 12/31/2009.



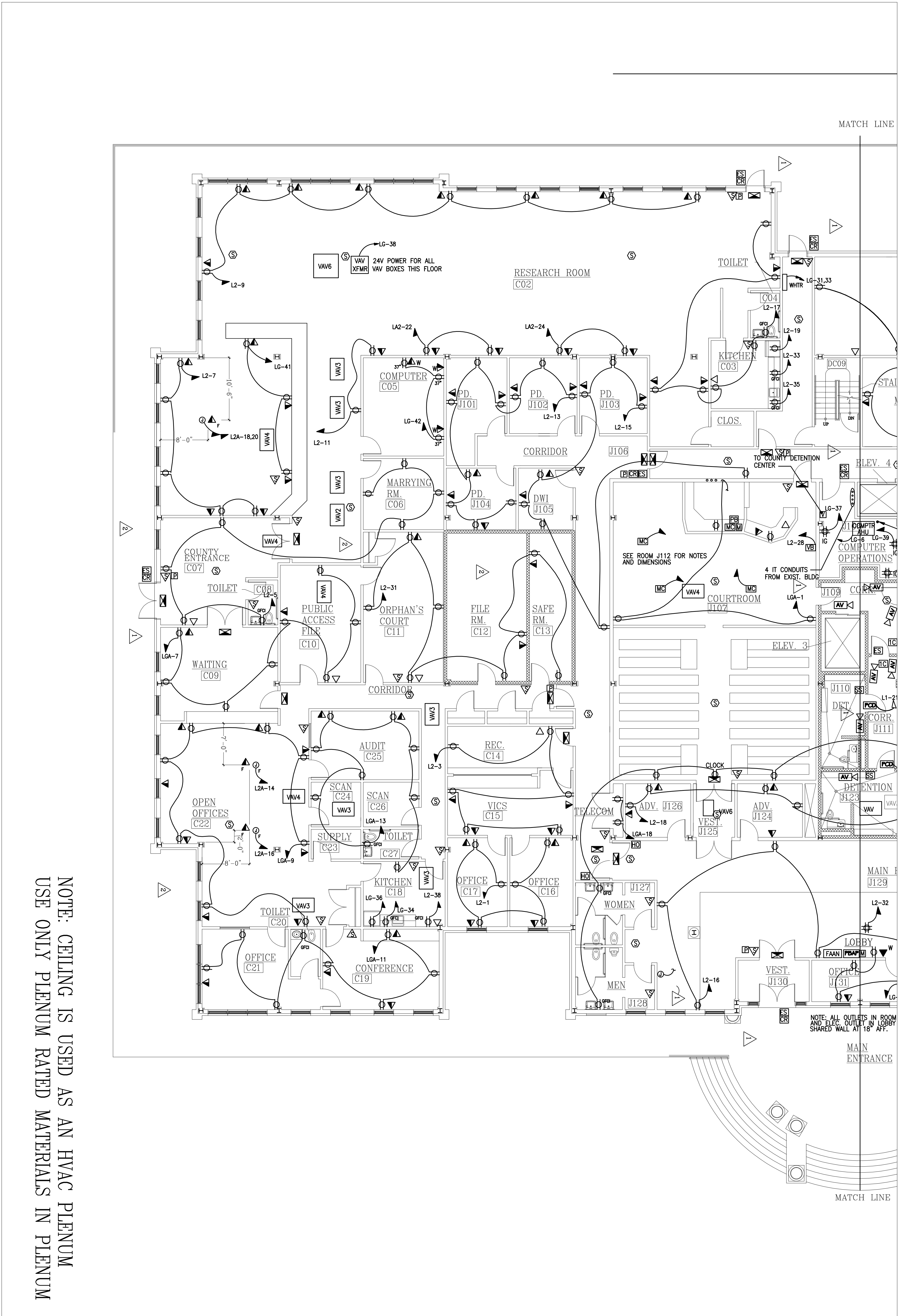
LEWIS ENGINEERING ASSOCIATES, INC
MECHANICAL and ELECTRICAL ENGINEERS
28841 RIVERWATCH DRIVE, MECHANICSVILLE, MD 20659
lewiseng.net (301) 884-3370 FAX (301) 884-2654

BL	
SK	9.12.07
	3.17.08
901	
1	OF 4

R.L. LITTEN & ASSOCIATES, ARCHITECTS
300 CHARLES STREET, SUITE 4
P.O. BOX 1920, LAPLATA, MD 20646 (301) 934-1471

EXPANSION OF CHARLES COUNTY COURTHOUSE
LA PLATA, MD

REVISIONS



NOTE: CEILING IS USED AS AN HVAC PLENUM
 USE ONLY PLENUM RATED MATERIALS IN PLENUM

1ST FLOOR POWER AND FIRE ALARM - NORTH
 SCALE: 1/8" = 1'-0"

ENGINEER'S CERTIFICATION STATEMENT
 I CERTIFY THAT THESE DOCUMENTS WERE PREPARED OR
 REVIEWED BY ME AND AM A LICENSED PROFESSIONAL
 ENGINEER IN THE STATE OF MARYLAND.
 LICENSE NO. 16927 - EXPIRATION DATE: MAY 12, 2008

LEWIS ENGINEERING ASSOCIATES, INC
MECHANICAL and ELECTRICAL ENGINEERS
 28841 RIVERWATCH DRIVE, MECHANICSVILLE, MD 20659
 lewiseng@olg.com (301) 884-3370 FAX (301) 884-2654

R.L. LITTEN & ASSOCIATES, ARCHITECTS
 300 CHARLES STREET, SUITE 4
 P.O. BOX 1920, LAPLATA, MD 20646 (301) 934-1471

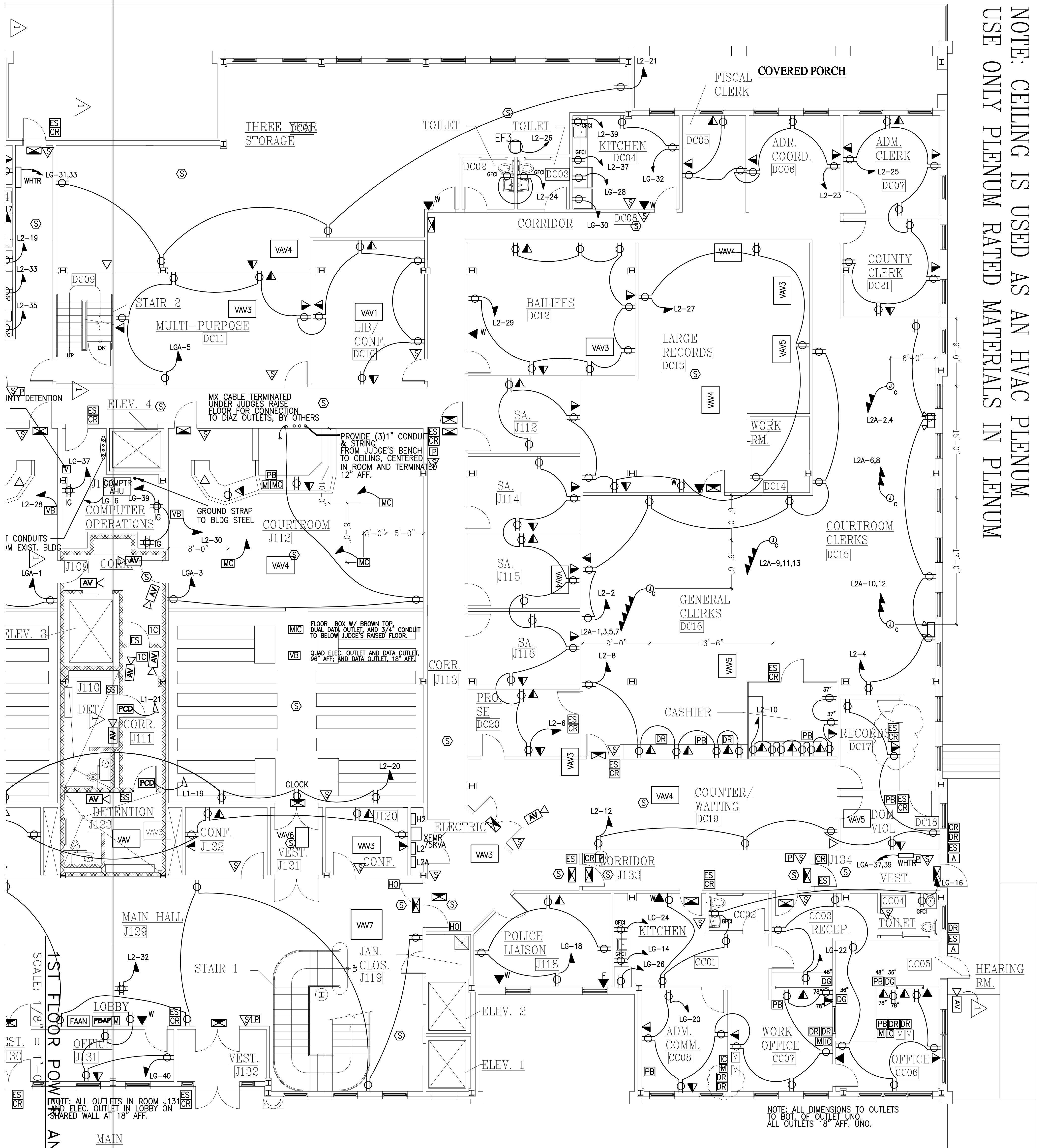
EXPANSION OF CHARLES COUNTY COURTHOUSE
 LA PLATA, MD

Revisions
ADD 3 12.28.07
Δ CDD 19.20.21.24
Δ CDD 29 & 30
CDD 49

BL
 SK
 9.12.07
 902
 2 OF 4

MATCH LINE

NOTE: CEILING IS USED AS AN HVAC PLENUM
USE ONLY PLENUM RATED MATERIALS IN PLENUM



NOTE: ALL OUTLETS IN ROOM J131 AND ELEC. OUTLET IN LOBBY ON SHARED WALL AT 18" AFF.

NOTE: ALL DIMENSIONS TO OUTLETS TO BOT. OF OUTLET UNO. ALL OUTLETS 18" AFF. UNO.

- SS SHERIFF'S SPEAKER
- A A PHONE

LEWIS ENGINEERING ASSOCIATES, INC
MECHANICAL and ELECTRICAL ENGINEERS
 28841 RIVERWATCH DRIVE, MECHANICSVILLE, MD 20659
 lewiseng@olg.com (301) 884-3370 FAX (301) 884-2654

R.L. LITTEN & ASSOCIATES, ARCHITECTS
 300 CHARLES STREET, SUITE 4
 P.O. BOX 1920, LAPLATA, MD 20646 (301) 934-1471

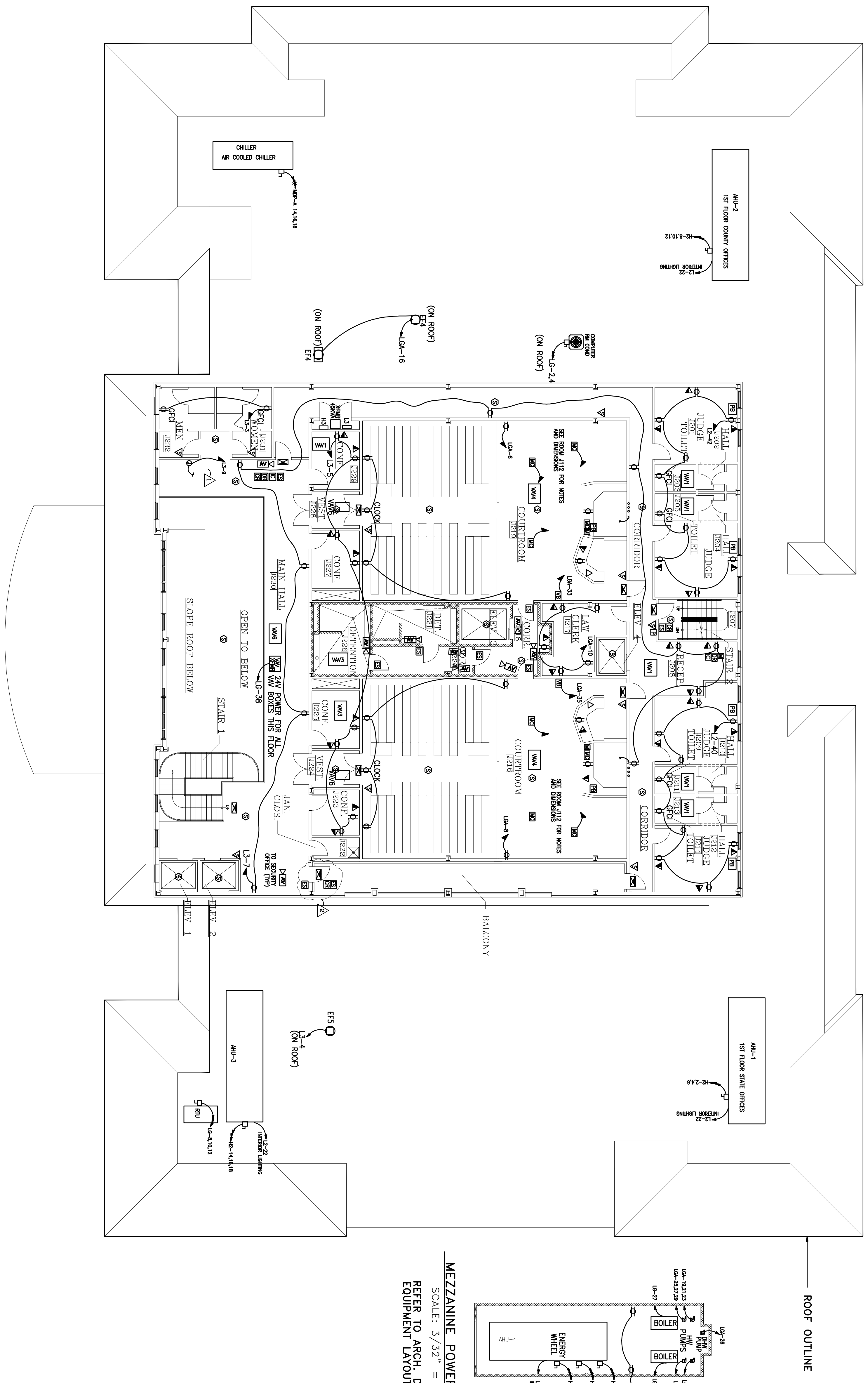
EXPANSION OF CHARLES COUNTY COURTHOUSE
 LA PLATA, MD

ENGIN... CERTIFICATION STATEMENT
 I HEREBY CERTIFY THAT THESE DOCUMENTS WERE PREPARED OR
 CHECKED UNDER MY CLOSE PERSONAL SUPERVISION AND
 I AM A LICENSED PROFESSIONAL ENGINEER IN THE STATE OF MARYLAND.
 LICENSE NO. 19927, EXPIRATION DATE MAY 12, 2008

3 OF 4
 903
 9.12.07
 BL
 SK

Revisions
 ADD 3 12/28/07
 CDD 19/20/21/24
 CDD 49

NOTE: CEILING IS USED AS AN HVAC PLENUM
 USE ONLY PLENUM RATED MATERIALS IN PLENUM



MEZZANINE POWER PLAN
 SCALE: 3/32" = 1'-0"
 REFER TO ARCH. DWGS. FOR
 EQUIPMENT LAYOUT

2ND FLOOR POWER AND FIRE ALARM
 SCALE: 3/32" = 1'-0"

LEWIS ENGINEERING ASSOCIATES, INC
MECHANICAL and ELECTRICAL ENGINEERS
 28841 RIVERWATCH DRIVE, MECHANICSVILLE, MD 20659
 lewiseng@olg.com (301) 884-3370 FAX (301) 884-2654

ENGINEER'S CERTIFICATION STATEMENT
 I CERTIFY THAT THESE DOCUMENTS WERE PREPARED OR
 APPROVED BY ME, AND THAT I AM A DULY LICENSED
 MECHANICAL AND ELECTRICAL ENGINEER IN THE STATE OF
 MARYLAND. LICENSE NO. 15927 - EXPIRATION DATE MAY 12, 2008

REVISIONS
CCD 49

EXPANSION OF CHARLES COUNTY COURTHOUSE
 LA PLATA, MD

R.L. LITTEN & ASSOCIATES, ARCHITECTS
 300 CHARLES STREET, SUITE 4
 P.O. BOX 1920, LAPLATA, MD 20646 (301) 934-1471

904
 BL
 SK
 9.12.07
 4 OF 4