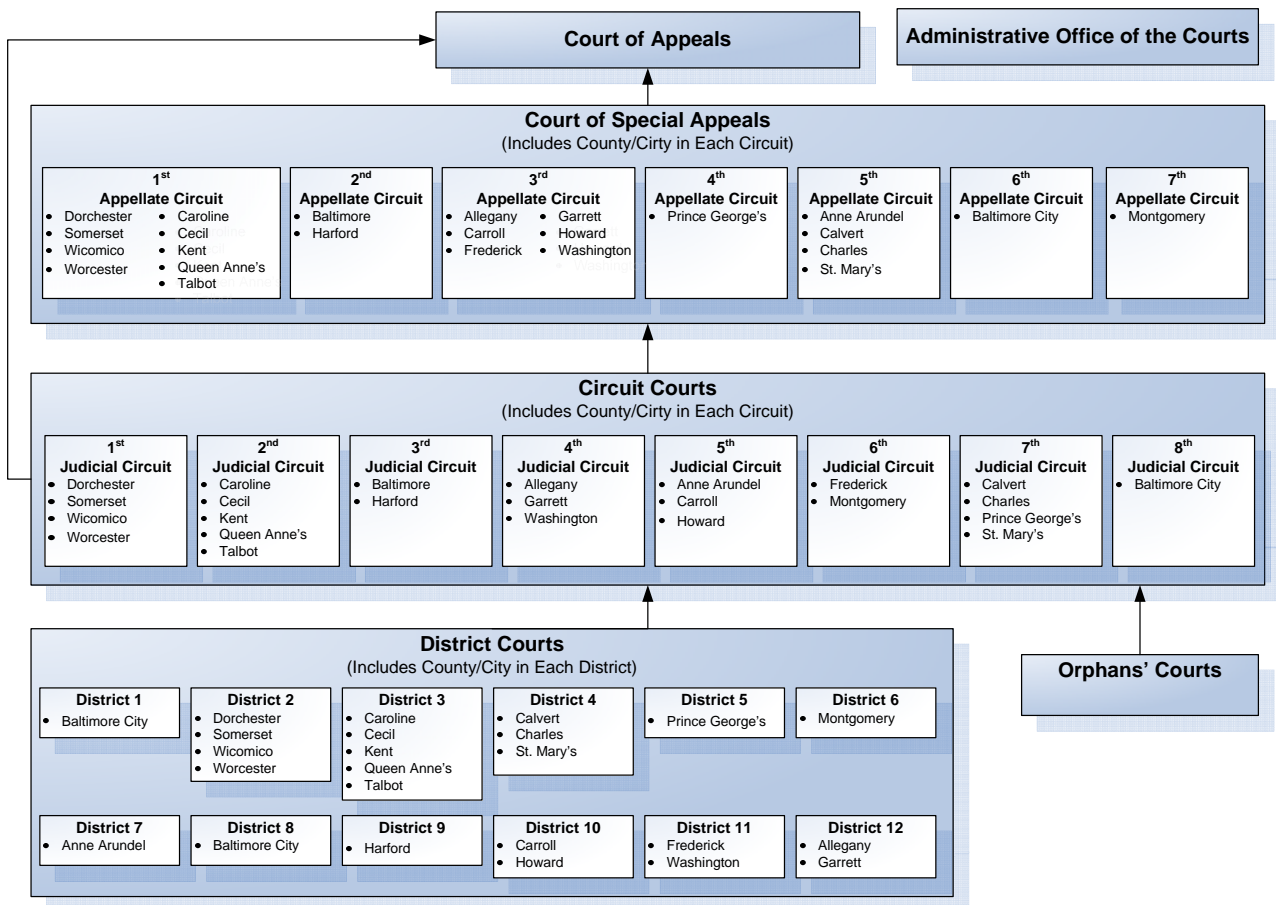


MARYLAND ADMINISTRATIVE OFFICE OF THE COURTS
MARYLAND ELECTRONIC COURT PROCUREMENT

Court Structure and Office Locations

Overview

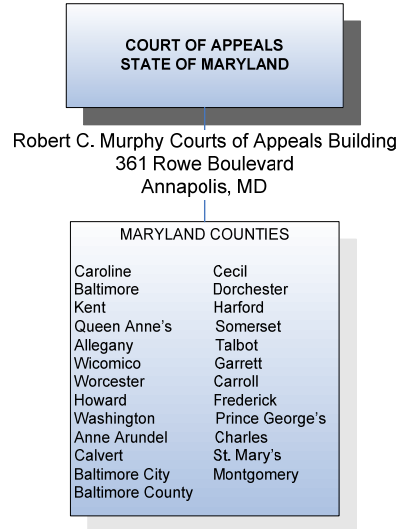
The Maryland Judiciary is divided into four levels with the two trial courts and two appellate courts. Although out of scope for this project, there is also the Orphans' Court. Below is an illustration of how a case advances through the Maryland court system.



The Orphans' Court in Maryland exclusively handles probate cases. These courts will be supported by a separate case management system. They are not in the scope of this procurement. However, in Harford and Montgomery counties, circuit court judges sit as judges of the Orphans' Court in these counties and all circuit courts will receive appeals from the Orphans' Court.

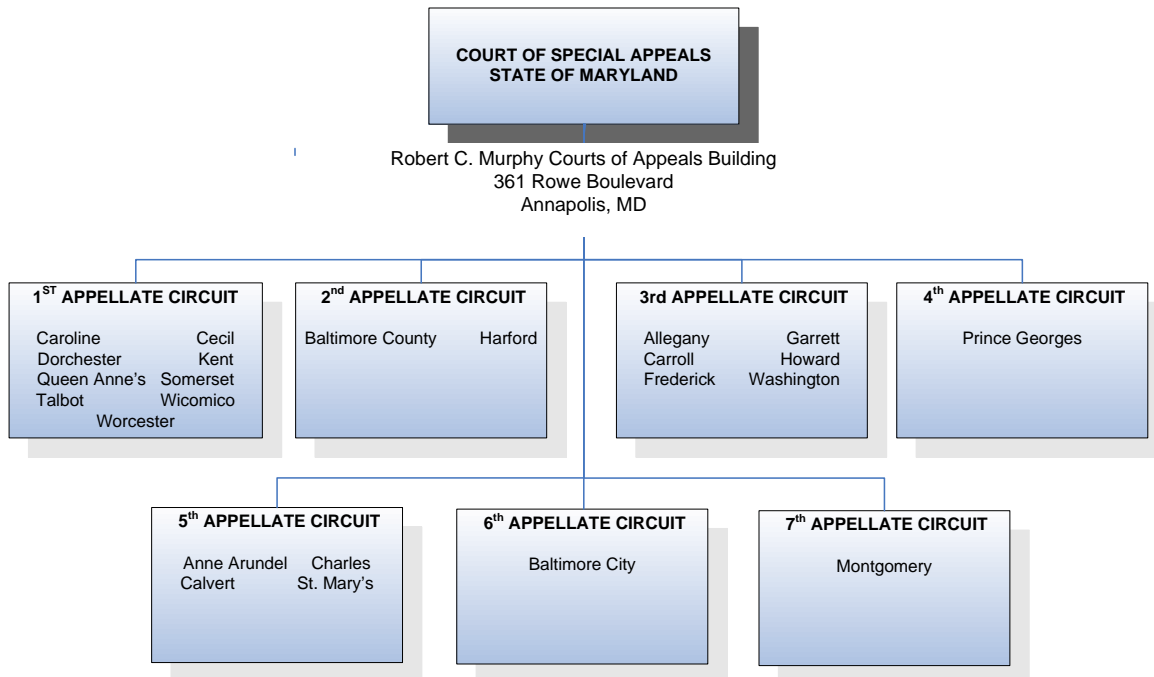
Court of Appeals

The Court of Appeals is the highest court in Maryland and is comprised of seven judges appointed by the Governor with Senate consent for ten-year terms.



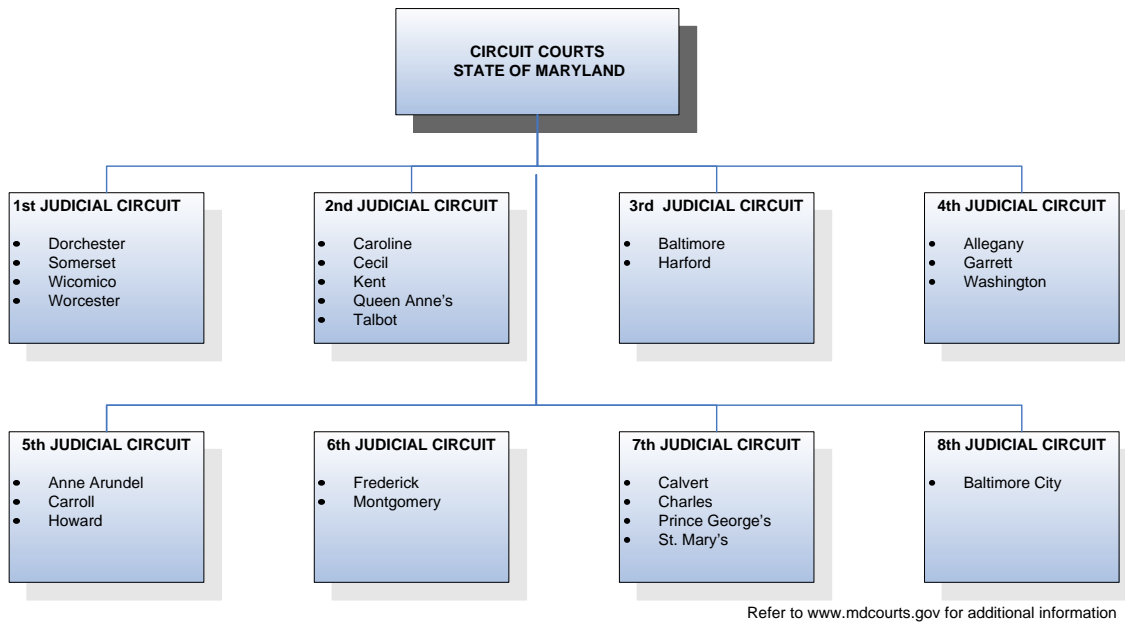
Court of Special Appeals

As the second highest court in Maryland, the Court of Special Appeals is an intermediate appellate court, responsible for hearing appeals cases from the circuit court. Established in 1966, the Court of Special Appeals is comprised of thirteen judges appointed by the Governor with Senate consent for ten-year terms and voter approval. The following illustrates the organization structure of the 7 appellate circuits.



Circuit Courts

The circuit courts are trial courts of general jurisdiction with one in each of Maryland's 24 political subdivisions and organized geographically into 8 judicial circuits statewide. These courts are comprised of 157 judges, 67 judicial masters, 1,372 clerk office personnel and 786 court staff. Each court is directed by a county administrative judge and each circuit is led by a circuit administrative judge, both of whom are appointed by the Chief Judge of the Court of Appeals. Judges in the circuit courts are elected to 15-year terms of office after an initial appointment by the Governor. The clerk's office in each political subdivision is overseen by a Clerk of Court who is elected to a 4-year term of office. Court staff is directed by a court administrator who is appointed by the county administrative judge. The following illustrates the organizational structure of the eight judicial circuits.

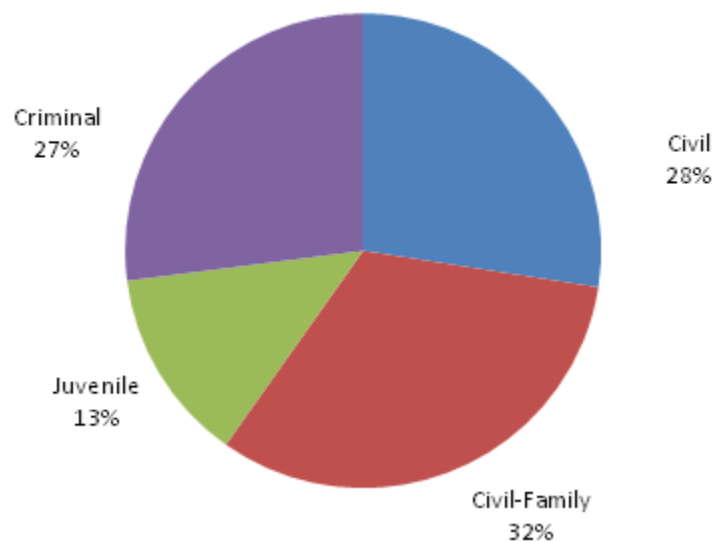


The following table includes a list of the circuit court locations and the number of judges in each county.

Circuit	County	Court Location	# of Judges
1st Judicial Circuit	Dorchester County	206 High St., Cambridge, MD 21613	1
	Somerset County	30512 Prince William St., Princess Anne, MD	1
	Wicomico County	101 North Division St., Salisbury, MD 21803	3
	Worcester County	One West Market St., Snow Hill, MD 21863	3
2nd Judicial Circuit	Caroline County	109 Market St., Denton, MD 21629	1
	Cecil County	129 East Main St., Elkton, MD 21921	3
	Kent County	103 North Cross St., Chestertown, MD 21620	1
	Queen Anne's County	100 Court House Square, Centreville, MD 21617	1

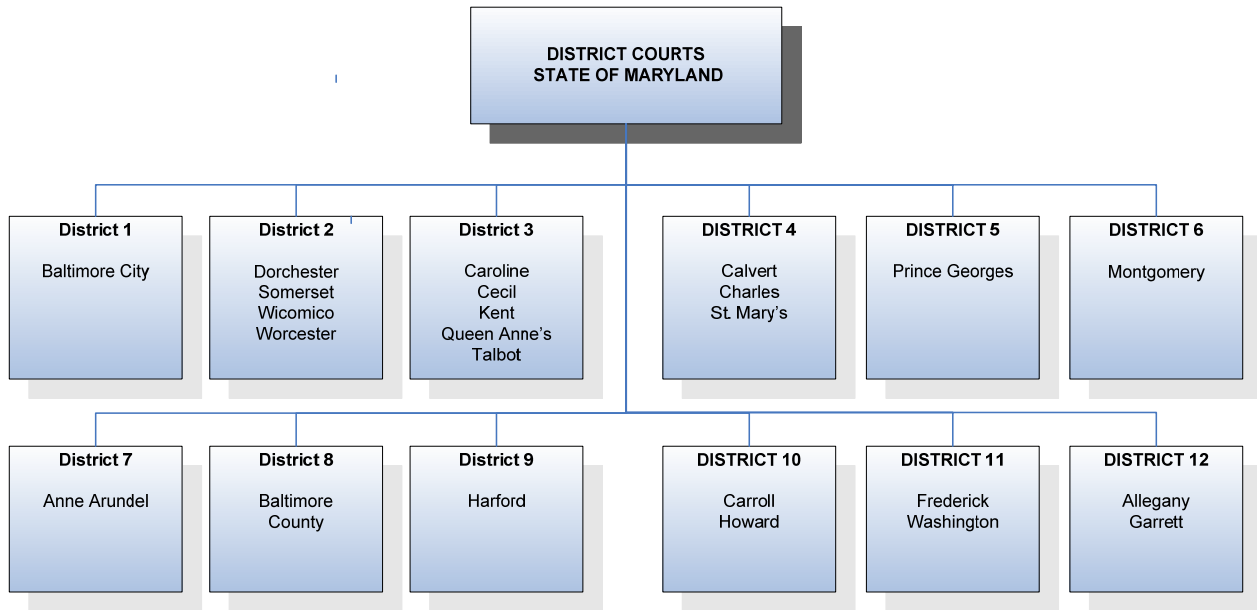
Circuit	County	Court Location	# of Judges
	Talbot County	11 North Washington St., Easton, MD 21601	1
3rd Judicial Circuit	Baltimore County	401 Bosley Ave., Towson, MD 21204	18
	Harford County	20 West Courtland St., Bel Air, MD 21014	5
4th Judicial Circuit	Allegany County	30 Washington St., Cumberland, MD 21502	2
	Garrett County	203 South 4th St., Oakland, MD 21550	1
	Washington County	24 Summit Ave., Hagerstown, MD 21740	5
5th Judicial Circuit	Anne Arundel County	7 Church Circle, Annapolis, MD 21404	12
	Carroll County	55 North Court St., Westminster, MD 21157	3
	Howard County	8360 Court Ave., Ellicott City, MD 21043	5
6th Judicial Circuit	Frederick County	100 West Patrick St., Frederick, MD 21701	4
	Montgomery County	50 Maryland Ave., Rockville, MD 20850	22
7th Judicial Circuit	Calvert County	175 Main St., Prince Frederick, MD 20678	2
	Charles County	200 Charles St., La Plata, MD 20646 - 3060	4
	Prince George's County	14735 Main St., Upper Marlboro, MD 20772	23
	St. Mary's County	41605 Courthouse Drive, Leonardtown, MD 20650	3
8th Judicial Circuit	Baltimore City	111 North Calvert St., Baltimore, MD 21202	33

There were 314,884 cases filed with the circuit court in 2009 in the following case types:



District Court

The District Court is a statewide court system with 34 courthouse locations in 12 districts.¹ The following illustrates the organizational structure of the 12 districts.



Refer to www.mdcourts.gov for additional information

Administrative judges, commissioners, and administrative clerks are appointed to their positions by the Chief Judge of the District Court. The Commissioners are judicial officers available 24 hours a day, 365 days a year. The commissioners in Districts 1,2,4,5,6,9,10 and 11 have offices in detention centers or central booking facilities of other agencies.

Their primary responsibilities include the following:

- Reviewing Applications for Statement of Charges to determine whether probable cause exists to issue charging documents.
- Conducting initial appearance hearings on arrested individuals to decide the conditions of pre-trial release.
- Authority to issue/deny petitions for interim protective and peace orders when court is not in session.

The clerks support the work of the courts and are responsible for a wide variety of activities, including scheduling cases, maintaining case files, distributing forms, and responding to requests for information.

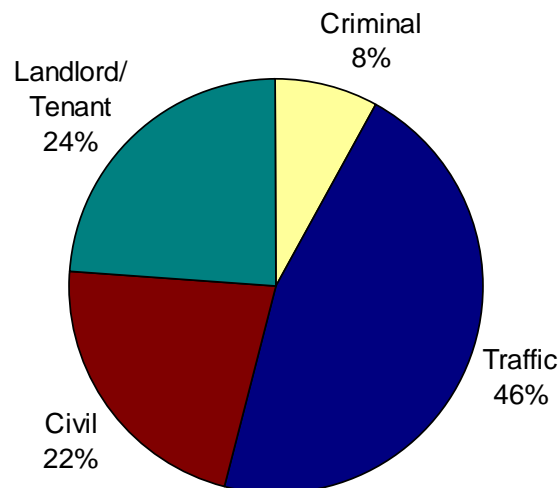
¹ <http://www.courts.state.md.us/district/selfhelp/dcgeneral.html>.

The following table includes a list of the District Court courthouse locations and the number of judges in each county.

District	County	Court Location	# of Judges
District 1	Baltimore City	Borgerding District Court Building 5800 Wabash Avenue, Baltimore, MD 21215	27
		Civil Division 501 East Fayette Street, Baltimore, MD 21202	
		Eastside District Court Building 1400 E. North Avenue, Baltimore, MD 21213	
		Central Booking Intake Facility 300 E. Madison Street, Baltimore, MD 21202	
		John R. Hargrove, Sr. Building 700 E. Patapsco Avenue, Baltimore, MD 21225	
District 2	Dorchester County	310 Gay St., Cambridge, MD 21613	1
	Somerset County	12155 Elm St. Ste C, Princess Anne, MD 21853	1
	Wicomico County	201 Baptist Street, Salisbury, MD 21801	2
	Worcester County	301 Commerce Street, Snow Hill, MD 21863	2
		6505 Coastal Highway, Ocean City, MD 21842	
District 3	Caroline County	207 S. Third Street, Denton, MD 21629	1
	Cecil County	170 E. Main Street, Elkton, MD 21921	2
	Kent County	103 N. Cross Street, Chestertown, MD 21620	1
	Queen Anne's County	120 Broadway, Centreville, MD 21617	1
	Talbot County	108 W. Dover Street, Easton, MD 21601	1
District 4	Calvert County	200 Duke Street, Prince Frederick, MD 20678	2
	Charles County	200 Charles Street, La Plata, MD 20646	2
	St. Mary's County	23110 Leonard Hall Drive, Leonardtown, MD 20650	1
District 5	Prince George's County	14735 Main Street, Suite 173B, Upper Marlboro, MD 20772	15
		4990 Rhode Island Avenue, Hyattsville, MD 20781	
District 6	Montgomery County	27 Court House Square, Rockville, MD 20850	11
		8552 Second Avenue, Silver Spring, MD 20910	
District 7	Anne Arundel County	251 Rowe Boulevard, Annapolis, MD 21401	9

District	County	Court Location	# of Judges
		7500 Gov. Ritchie Highway, Glen Burnie, Md 21061-3756	
District 8	Baltimore County	120 E. Chesapeake Avenue, Towson, MD 21286	13
		8914 Kelso Drive, Essex, MD 21221	
		900 Walker Avenue, Catonsville, MD 21228	
District 9	Harford County	2 South Bond Street, Bel Air, MD 21014	4
District 10	Carroll County	101 North Court Street, Westminster, MD 21157	2
	Howard County	3451 Courthouse Drive, Ellicott City, MD 21043	5
District 11	Frederick County	100 W. Patrick Street, Frederick, MD 21701	3
	Washington County	36 W. Antietam Street, Hagerstown, MD 21740	2
District 12	Allegany County	123 South Liberty St., 2nd floor, Cumberland, MD 21502	2
	Garrett County	205 South 3rd St., Oakland, MD 21550	1

More than 2 million cases are filed with the District Court annually. In 2008, 2,449,172 cases were filed with the District Court in the following case types:



Problem Solving Court Programs

In order to address the specialized need of certain case types, The District Court and circuit courts created the following specialty courts:

- Drug Courts.
- Domestic Violence Courts.
- Driving Under the Influence (DUI) Courts.

- Early Resolution Courts.
- Mental Health Courts.
- Mental Health Diversion Courts.
- Alternative Dispute Courts.
- Truancy Courts.
- Family Recovery Court

These specialized courts are tasked with monitoring the issues of litigants over time rather than resolving single cases. The AOC administers the programmatic component of drug, truancy and mental health courts through the Office of Problem Solving Courts.