

Maryland Judiciary

Fiscal Year 2016

Statewide Caseflow Assessment

Circuit Courts



Administrative Office of the Courts

September 2017

Table of Contents

Main Analysis	1
Within-Standard Percentages	1
Five-Year Within-Standard Percentages	4
Average Case Processing Times	6
Median Case Processing Times	7
Distribution of Over-Standard Cases	8
Postponements	8
Suspensions	10
Appendix A: Circuit Courts Within-Standard Percentages & Overall and Over-Standard Average and Median Case Processing Times, by Case Type and Jurisdiction	16
Appendix B: Circuit Courts Statewide Distribution of Over-Standard Cases	23
Appendix C: Circuit Courts Percent of Cases Terminated Within-Standard, by Jurisdiction Fiscal Years 2012 through 2016*	33

Main Analysis

The analysis of case processing performance in Maryland's circuit courts for Fiscal Year 2016 is based on samples of original terminations from circuit court jurisdictions for the following case types: Criminal, Civil General, Foreclosure, Family Law (one-year standard), Limited Divorce (two-year standard), Juvenile Delinquency, Child in Need of Assistance (CINA) Shelter, CINA Non-Shelter, and Termination of Parental Rights (TPR). Foreclosure cases were added as a new case type in Fiscal Year 2016, most recently reported under Civil General. Samples of up to 500 original terminations were used for each case type, yielding a grand total of 48,463 cases for analysis (less invalid terminations).¹

Weighted figures are computed for instances in which data is displayed in the aggregate (i.e., statewide percentages of cases closed within-standard, average, and median case times by jurisdiction size), to reflect each jurisdiction's contribution to overall terminations, by case type.

Case processing performance by jurisdiction and case type is provided in Appendix C of this report.²

Within-Standard Percentages

As seen in Table 1, statewide case processing performance in Fiscal Year 2016 showed improvements greater than 2% in five case types (Criminal, Civil General, Limited Divorce, CINA Shelter, and TPR). With Foreclosure as a separate case type this year, 95% of those cases were within standard. Although not a separate case type in Fiscal Year 2015, foreclosure cases were included in the analysis. In Fiscal Year 2015, Foreclosure cases were 88% within standard statewide on an unweighted basis.

Both Family Law and Juvenile Delinquency had relatively stable case processing performance, with a 1% change in within-standard terminations for each case type. A decline in case processing performance was observed in CINA Non-Shelter cases, with 85% of cases terminated within-standard in Fiscal Year 2016 compared to 90% in 2015.

Appendix C (page 34) displays the statewide percent of cases terminated within standard by case type for Fiscal Years 2012 to 2016 and subsequent pages in Appendix C (pages 35 to 58) displays the percent of cases terminated within standard by case type for each county.

CINA Shelter was the case type with the greatest between-year variance from Fiscal Year 2012 to 2016, moving from 65% of cases terminated within standard to 75% of cases terminated within standard. With the relatively small number of CINA Shelter cases statewide as compared to other case types, greater variability in the percent terminated within or over standard is

¹ Cases without case start dates and those with negative case processing times (i.e., case stop dates occurring before start dates) were excluded from the current analysis. An analysis of these invalid cases is included in a supplemental statewide Methodology/Data issues report.

² Do to the transition to a new case management system, the Circuit Courts on the upper and lower eastern shore were excused from conducting any data quality review ahead of the Fiscal Year 2016 analysis of case processing performance.

expected. TPR cases have also shown improvement across the five-year period, moving from 63% to 79% of cases terminated within standard from Fiscal Year 2012 to 2016, respectively. The year with the highest percent of TPR cases terminated within the case time standards, however, was Fiscal Year 2014, at 72%. Family Law has also shown improvement in the percent of cases terminated within the case time standards at 85% in Fiscal Year 2012 and 91% in Fiscal Year 2016. As mentioned previously, Foreclosure cases have shown increases in case processing performance, as have Civil General cases, with 91% of cases terminated within standard in Fiscal Year 2012 and 95% in Fiscal Year 2016.

Four case types had modest decreases in case processing performance during this five-year period. The percent of Criminal cases terminated within standard has declined from 90% in Fiscal Year 2012 to 87% in Fiscal Year 2016. Both Juvenile Delinquency and Limited Divorce showed 2% decreases in the percent of cases terminated within standard between Fiscal Year 2012 and Fiscal Year 2016. However, Juvenile Delinquency shows relatively little variability, with either no change or a change of 1% from year to year. By contrast, Limited Divorce had a swing of 9% in the percent of cases terminated within standard between Fiscal Year 2013 and Fiscal Year 2015. Finally, the percent of CINA Non-Shelter cases terminated within standard decreased from 90% in Fiscal Year 2012 to 85% in Fiscal Year 2016.

Table 1. Valid Terminations and Percent of Cases Terminated Within-Standard (Weighted) by Case Type, Circuit Courts, Fiscal Years 2015 and 2016

Case Type	Judiciary Goals		FY 2016 Valid Terminations	Within-Standard Terminations			FY 15-16 Change
				FY 2016		FY 2015 % ^a	
	Time Standard	Percent Within-Standard		N	%* (weighted)		
Criminal	180 days	98%	10,388	9,439	87%	84%	3%
Civil General ^{b, c}	548 days	98%	8,435	8,015	95%	91%	4%
Foreclosure ^d	730 days	98%	8,760	8,377	95%	N/A	N/A
Family Law ^e	365 days	98%	10,893	10,209	91%	89%	1%
Limited Divorce ^e	730 days	98%	2,277	2,152	94%	89%	5%
Juvenile Delinquency	90 days	98%	5,436	5,142	95%	96%	-1%
CINA Shelter	30 days	100%	1,634	1,230	76%	71%	5%
CINA Non-Shelter	60 days	100%	279	239	85%	90%	-5%
TPR	180 days	100%	361	248	68%	66%	2%

^a Percentages of cases closed within the Time Standards are weighted averages of jurisdiction-specific statistics.

^b The Circuit Court Civil General time standard is 98% of cases closed within 18 months (548 days) from filing. The District Court Civil time standard initiates at service, with the associated goal of closing 98% of Civil Large cases in 250 days and 98% of Civil Small cases in 120 days.

^c Foreclosure cases are included in statewide the Fiscal Year 2015 Civil General case sample. These cases were excluded from both the Fiscal Year 2011 and Fiscal Year 2012 Civil case samples. Beginning in Fiscal Year 2016 Foreclosure cases were analyzed as a separate case type.

^d Foreclosure was added as a separate case type beginning Fiscal Year 2016. Foreclosure cases were previously reported under Civil General.

^e Beginning with the Fiscal Year 2014 Assessment, the 365-Day (98%) Family Law case time standard became applicable to all except Limited Divorce cases. The 730-Day (98%) case time standard is now applicable only to Limited Divorce cases.

An examination of case processing performance by jurisdiction size (as determined by the number of judges in a given county) illustrates the impact of high case volume or alternatively on efficiencies of scale. See Table 2. It should be noted that nine counties were excused from conducting the data quality review for this year's analysis due to the transition to a new case management system. Six of those nine counties are small jurisdictions; the remaining three counties are medium jurisdictions.

The impact of jurisdiction size is particularly evident in two case types with wide variability by jurisdiction size: Criminal and Family Law. Fiscal Year 2016 shows an 87% within-standard percent for criminal cases, with large jurisdictions performing at 86% within standard, compared to 81% in Fiscal Year 2015. Small (95%), medium (91%), and medium-large (88%) jurisdictions again performed above the statewide within-standard percent for criminal cases.

As with previous years, large circuit court jurisdictions collectively performed at the highest rate in the Juvenile Delinquency case type in Fiscal Year 2016, at 96% within standard. Large jurisdiction Circuit Courts also increased performance from Fiscal Year 2015 to 2016 in Civil General from 92% to 95% within standard. Large jurisdiction Circuit Courts performed below the statewide percent within-standard in CINA Shelter cases (77% statewide compared to 73% for large jurisdictions). For all other case types, these courts were within 1% or were above the statewide within-standard percent.

Medium-large jurisdiction courts performed at their highest rate in Limited Divorce cases, with 96% within standard. All other case types were within 1% or were above the statewide within-standard percent for medium-large jurisdictions. Medium jurisdiction courts performed at their highest rate in Foreclosure and Limited Divorce cases with both at 97% within standard. These courts also performed within 1% or were above the statewide within-standard percent for Criminal, Civil General, Foreclosure, Family Law, Limited Divorce, CINA Non-Shelter, and CINA Shelter.

Small circuit court jurisdictions performed, collectively, at the highest rate among the size classifications in Fiscal Year 2016 in the Criminal and Limited Divorce case types. These courts performed at the statewide within-standard percent for Civil General and above it for Foreclosure cases. Compared to Fiscal Year 2015, it appears that the small jurisdictions' performance in the TPR and CINA Non-Shelter cases is markedly lower. This may be due in part to the fact that all but one of these jurisdictions were excused from performing a data quality review for this year's assessment. Small jurisdiction courts have far fewer cases of this nature. Therefore, any errors typically corrected during the data quality review and any increased processing time due to the transition to the new case management system would have a larger relative impact than in other sized jurisdictions.

Finally, a comparison of Table 2 and Table A-2 in Appendix A illustrates the impact that the performance of large jurisdictions has on the statewide within-standard percentages, due to the higher volume of cases terminated in larger jurisdictions.

Table 2. Percent of Cases Closed Within-Standard (Weighted) as a Function of Jurisdiction Size and Case Type, Circuit Courts, FY 2016

Case Type	Time Standard	Judiciary Goals	Statewide Within-Standard Percentage*	Jurisdiction Size ^a			
				Small ^b	Medium ^c	Medium-Large	Large
Criminal	180 days	98%	87%	95%	91%	88%	86%
Civil General	548 days	98%	95%	95%	95%	95%	95%
Foreclosure	730 days	98%	95%	96%	97%	94%	95%
Family Law	365 days	98%	90%	96%	96%	94%	89%
Limited Divorce	730 days	98%	94%	100%	97%	96%	93%
Juvenile Delinquency	90 days	98%	95%	89%	93%	94%	96%
CINA Shelter	30 days	100%	77%	55%	81%	82%	73%
CINA Non-Shelter	60 days	100%	85%	65%	96%	85%	85%
TPR	180 days	100%	70%	33%	54%	82%	70%

^a Percentages of cases closed within the Time Standards are weighted averages of jurisdiction-specific statistics.

^b Six of seven small jurisdictions were excused from conducting a data quality review for the Fiscal Year 2016 analysis.

^c Three of six medium jurisdictions excused from conducting a data quality review for the Fiscal Year 2016 analysis.

Five-Year Within-Standard Percentages

A five-year history of the number and percentage of jurisdictions that performed at or better than the Judiciary's case time standard goals, by case type, is provided in Table 3.³ As noted previously, nine counties were excused from conducting a data quality review for the Fiscal Year 2016 analysis and one county was excluded in Fiscal Year 2015. Given that, cross-year comparisons as to the number of courts that perform at or above the case time standard goals should be interpreted with caution.

³ Due to the roll-out of a new case management system, the following courts were given certain exemptions from the case processing performance analysis in the year listed: a) the Circuit Court for Anne Arundel County, Fiscal Year 2015, was not included in the large jurisdictions or statewide analysis; b) the Circuit Courts for Caroline, Dorchester, Kent, Queen Anne's, Somerset, and Talbot counties, Fiscal Year 2016, were excused from conducting data quality reviews, however their performance is included in the small jurisdictions and statewide analysis; c) the Circuit Courts for Cecil, Wicomico, and Worcester counties, Fiscal Year 2016, were excused from conducting data quality reviews, however their performance is included in the medium jurisdictions or statewide analysis.

Table 3. Counties Performing At or Above the Case Time Standard Goals, Statewide and by Number and Percent of Jurisdictions of Like-Size, Fiscal Years 2012 through 2016

Jurisdiction	Criminal	Civil General	Foreclosure ***	Family Law Standard 1**	Family Law Standard 2/Limited Divorce**	Juvenile Delinquency	CINA Shelter	CINA Non-Shelter	TPR
	<i>N (%)</i>	<i>N (%)</i>	<i>N (%)</i>	<i>N (%)</i>	<i>N (%)</i>	<i>N (%)</i>	<i>N (%)</i>	<i>N (%)</i>	<i>N (%)</i>
<u>FY 2012</u>									
Small	7 (78%)	4 (44%)	N/A	7 (78%)	9 (100%)	4 (44%)	2 (22%)	4 (44%)	3 (33%)
Medium	2 (20%)	2 (20%)	N/A	8 (80%)	10 (100%)	5 (50%)	1 (10%)	5 (50%)	6 (60%)
Large	1 (20%)	2 (40%)	N/A	2 (40%)	2 (40%)	3 (60%)	1 (20%)	1 (20%)	0 (0%)
Statewide	10 (42%)	8 (33%)	N/A	17 (71%)	21 (88%)	12 (50%)	4 (17%)	10 (42%)	9 (38%)
<u>FY 2013</u>									
Small	5 (56%)	3 (33%)	N/A	6 (67%)	7 (78%)	4 (44%)	2 (22%)	3 (33%)	4 (44%)
Medium	3 (30%)	2 (20%)	N/A	8 (80%)	9 (90%)	5 (50%)	2 (20%)	6 (60%)	4 (40%)
Large	1 (20%)	0 (0%)	N/A	2 (40%)	3 (60%)	2 (40%)	1 (20%)	2 (40%)	1 (20%)
Statewide	9 (38%)	5 (21%)	N/A	16 (67%)	19 (79%)	11 (46%)	5 (21%)	11 (46%)	9 (38%)
<u>FY 2014</u>									
Small	3 (43%)	1 (14%)	N/A	3 (43%)	7 (100%)	3 (43%)	3 (43%)	5 (71%)	1 (14%)
Medium	3 (50%)	0 (0%)	N/A	2 (33%)	3 (50%)	3 (50%)	0 (0%)	2 (33%)	1 (17%)
Medium-Large	1 (17%)	0 (0%)	N/A	2 (33%)	4 (67%)	3 (50%)	0 (0%)	4 (67%)	4 (67%)
Large	0 (0%)	0 (0%)	N/A	0 (0%)	2 (40%)	1 (20%)	0 (0%)	3 (60%)	2 (40%)
Statewide	7 (29%)	1 (4%)	N/A	7 (29%)	16 (67%)	10 (42%)	3 (13%)	14 (58%)	8 (33%)
<u>FY 2015</u>									
Small	4 (60%)	1 (14%)	N/A	3 (43%)	7 (100%)	2 (29%)	2 (29%)	3 (43%)	3 (43%)
Medium	3 (50%)	2 (33%)	N/A	2 (33%)	4 (67%)	4 (67%)	0 (0%)	2 (33%)	2 (33%)
Medium-Large	0 (0%)	0 (0%)	N/A	3 (50%)	5 (83%)	1 (17%)	1 (17%)	3 (50%)	3 (50%)
Large*	0 (0%)	0 (0%)	N/A	0 (0%)	1 (25%)	1 (25%)	0 (0%)	2 (50%)	1 (25%)
Statewide*	7 (30%)	3 (13%)	N/A	8 (35%)	17 (74%)	8 (35%)	3 (13%)	10 (43%)	9 (39%)
<u>FY 2016</u>									
Small	3 (43%)	2 (29%)	2 (29%)	3 (43%)	7 (100%)	1 (14%)*	1 (17%)*	3 (60%)*	2 (40%)*
Medium	2 (33%)	2 (33%)	2 (33%)	2 (33%)	4 (67%)	1 (17%)	0 (0%)	3 (100%)*	0 (0%)
Medium-Large	0 (0%)	1 (17%)	0 (0%)	1 (17%)	4 (67%)	3 (50%)	0 (0%)	3 (50%)	4 (67%)
Large	0 (0%)	1 (20%)	1 (20%)	0 (0%)	3 (60%)	2 (40%)	1 (20%)	2 (50%)*	1 (20%)
Statewide	5 (21%)	6 (25%)	5 (21%)	6 (25%)	18 (75%)	7 (29%)	2 (9%)*	11 (61%)*	7 (32%)*

Note: Percentages in Table 3 are computed as the proportion of all jurisdictions of like-size performing at or above the Case Time Standards goal. Jurisdictions with no terminations for a specific case type were excluded from the proportional calculations.

**In Fiscal Year 2015, large jurisdiction calculations are based on a total of 4 jurisdictions (excludes Anne Arundel County). Statewide calculations for Fiscal Year 2015 are based on 23 jurisdictions.*

***The 365-Day (98%) Family Law case time standard became applicable to all except Limited Divorce cases in Fiscal Year 2014. The 730-Day (98%) case time standard is now applicable only to Limited Divorce cases beginning with the Fiscal Year 2014 Assessment.*

****Foreclosure was added as a separate case type in Fiscal Year 2016; these cases were previously counted among Civil General cases.*

Average Case Processing Times

Statewide overall, within-, and over-standard average case processing times in the circuit courts for Fiscal Year 2016 are provided in Table 4. The statewide overall average case processing times were within standard for each case type except CINA Shelter and TPR cases in Fiscal Year 2016.

Reductions in overall average case processing times from Fiscal Year 2015 to Fiscal Year 2016 were observed in Criminal (11 days), Family Law (9 days), and Civil General (70 days). The steep reduction in Civil General is likely due to foreclosure cases being moved to a separate case type. Limited Divorce showed the most dramatic reduction (71 days). Delinquency, CINA Shelter, CINA Non-Shelter, and TPR showed increased overall average case processing times Fiscal Year 2015 to Fiscal Year 2016.

A comparison of average time to disposition within standard to over standard revealed that the over standard ranged widely, from more than 1.8 times longer in CINA Shelter cases to 4.1 times longer for Juvenile Delinquency cases. The next largest discrepancy was for Criminal and Family Law cases; both had over standard average case processing times 3.8 times longer than the average within standard processing times. CINA Non-Shelter (3.4 times longer), Limited Divorce (3.3 times longer), Civil General (3.2 times longer), Foreclosure (2.7 times longer), and TPR (2.3 times longer) varied in within-standard and over-standard average time to disposition.

Table 4. Average Overall, Within- and Over-Standard Case Processing Time (Weighted) by Case Type, Circuit Courts, FY 2016

Case Type	Time Standard	FY 2016 Average Case Time (in days)*			FY 2015 Overall Average Case Time
		Overall	Within-Standard	Over-Standard	
Criminal	180 days	106	77	289	117
Civil General	548 days	238	213	698	308
Foreclosure	730 days	369	340	901	N/A
Family Law	365 days	176	138	531	185
Limited Divorce	730 days	314	276	936	385
Juvenile Delinquency	90 days	43	37	153	42
CINA Shelter	30 days	37	23	71	34
CINA Non-Shelter	60 days	57	33	113	41
TPR	180 days	191	135	313	179

**Average case times (in days) are weighted averages of jurisdiction-specific statistics.*

Median Case Processing Times

Table 5 provides the statewide overall, within-, and over-standard median case processing times (the middle value in the distribution of case processing times from lowest to greatest case time) in the circuit courts for Fiscal Year 2016. Median case times are useful to examine since they are not affected by cases with extreme case lengths (known as “outliers”), whereas the average is influenced by outliers.

The overall median case processing time was below the time standard for all case types in Fiscal Year 2016. By comparison, the overall average case processing times were longer than the time standard in CINA Shelter and TPR cases. This highlights the impact of outliers on some measures of case processing. Further, the difference in number of days between the average and median case processing times were as follows, with the median always shorter: Criminal (26 days), Civil General (34 days), Foreclosure (19 days), Family Law (39 days), Limited Divorce (29 days), Juvenile (7 days), CINA Shelter (10 days), CINA Non-Shelter (2 days) and TPR (24 days).

A comparison of median time to disposition within standard to over standard revealed that the over standard ranged widely, from more than 1.9 times longer in TPR cases to 4 times longer for Family Law cases. The next largest discrepancy between median within standard and over standard was for Juvenile Delinquency, which was 3.9 times longer than the average within standard case processing times. Criminal (3.7 times longer), Civil General (3.4 times longer), Limited Divorce (3.3 times longer), CINA Non-Shelter (3.2 times longer), Foreclosure (2.5 times longer), and CINA Shelter (2.3 times longer) also varied in within-standard and over-standard median time to disposition.

Table 5. Median Overall, Within- and Over-Standard Case Processing Time (Weighted) by Case Type, Circuit Courts, FY 2016

Case Type	Time Standard	Fiscal Year 2016 Median Case Time (in days)*			Fiscal Year 2015 Overall Median Case Time
		Overall	Within-Standard	Over-Standard	
Criminal	180 days	80	69	255	82
Civil General	548 days	204	187	631	292
Foreclosure	730 days	350	338	853	N/A
Family Law	365 days	137	120	476	140
Limited Divorce	730 days	285	267	880	336
Juvenile Delinquency	90 days	36	35	136	38
CINA Shelter	30 days	27	24	56	28
CINA Non-Shelter	60 days	55	34	109	36
TPR	180 days	167	137	261	163

**Median case times (in days) are weighted averages of jurisdiction-specific statistics.*

Distribution of Over-Standard Cases

Given that over-standard cases can take anywhere from 1.9 to 4.0 times longer than within-standard cases, it is useful to examine how over-standard cases are dispersed over time. Table 6 provides data on the statewide distribution of cases closed past the case time standard goals, by case type. Appendix B on pages 23 to 32 contains diagrams on the distribution of cases closed over-standard in Fiscal Year 2016, by case type.

Both CINA Shelter and CINA Non-Shelter have a relatively large proportion of cases that are disposed within one-week of the time standard (20% of cases) and within one-month of the time standard (60% and 53%, respectively). Additionally, the largest number of cases to be disposed within one-week of the time standard were CINA Shelter cases at 81 cases. The time to close 50% of both CINA Shelter and CINA Non-Shelter cases was 3.1 weeks over standard. The other case type showing a relatively fast case closure after the time standard was Juvenile Delinquency, with 16% (48 cases) closing within one week, 47% (138 cases) closing within one month, and 50% closing within 1 month.

By contrast, Limited Divorce cases had 4% (5 cases) close within one week and only 10% (13 cases) within one month. Similarly, Foreclosure cases had 4% (17 cases) close within one week and 14% (53 cases) close within one month.

Table 6. Percent of Over-Standard Cases Closed Shortly Beyond the Time Standard and Time Required to Close 50% of Over-Standard Cases by Case Type, Circuit Courts, FY 2016

Case Type	Time Standard	Number of Over-Standard Cases	% of Over-Standard Cases Closing Over Standard*				Time to Close 50% of Over-Standard Cases
			Within 1 week		Within 1 month		
Criminal	180 days	949	6%	56 cases	24%	226 cases	2.4 months
Civil General	548 days	420	5%	21 cases	16%	69 cases	4.2 months
Foreclosure	730 days	383	4%	17 cases	14%	53 cases	4 months
Family Law	365 days	684	5%	34 cases	18%	124 cases	3.5 months
Limited Divorce	730 days	125	4%	5 cases	10%	13 cases	5.5 months
Juvenile Delinquency	90 days	294	16%	48 cases	47%	138 cases	1 month
CINA Shelter	30 days	404	20%	81 cases	60%	244 cases	3.1 weeks
CINA Non-Shelter	60 days	40	20%	8 cases	53%	21 cases	3.1 weeks
TPR	180 days	113	5%	6 cases	24%	27 cases	2.7 months

*The aggregate percent of cases closing (just) over their respective time standards are **not** weighted; therefore, caution should be used when generalizing this information to the statewide level.

Postponements

As part of the Caseflow Assessment process, we track the number and proportion of cases containing one or more postponements and court personnel verify this information in the case

records for accuracy. For the purpose of this analysis, a “case with valid postponement information” is defined as a case with either valid information in the “number of postponements” data field or postponement reasons provided, except for where both the number and reason fields indicated no postponement.

Cases with “matching postponement information” are those where the number of identified postponements matches the number of postponement reasons. Cases with “mismatched postponement information” are those where, (1) a postponement is identified but no reason is provided, (2) the number of postponements and the number of postponement reasons do not match, or (3) no postponement is identified based on the number of postponements but postponement reasons are provided.

As seen in Table 7, the highest postponement rate in the Fiscal Year 2016 Assessment was among Criminal cases, followed by Juvenile Delinquency, with postponements in 41% of criminal cases and in 40% of Juvenile Delinquency cases. The number of cases with postponements showed the greatest drop from Fiscal Year 2015 to Fiscal Year 2016 among CINA Non-Shelter (from 46% to 38% of cases) and TPR cases (from 45% to 35% of cases). The lowest postponement rates in Fiscal Year 2016 were in Foreclosure (15%), Family Law (12%), and Civil General (15 %) case types.

Table 7. Number and Percent of Cases with Postponement Information by the Match between the Number of Postponements and Postponement Reasons, by Case Type, Circuit Courts, FY 2016

Case Type	FY 2016 Valid Terminations	Cases with Valid Postponement Information*			Matching Postponement Information**		Mismatched Postponement Information** *	
		N	%	FY 2015 %	N	%	N	%
Criminal	10,388	4,290	41%	39%	4,204	98%	86	2%
Civil General	8,435	1,291	15%	16%	1,252	97%	39	3%
Foreclosure	8,760	1,346	15%	-	1,346	100%	0	0%
Family Law****	10,893	1,316	12%	12%	1,281	97%	35	3%
Limited Divorce	2,277	561	25%	26%	539	96%	22	4%
Juvenile Delinquency	5,436	2,163	40%	47%	2,078	96%	85	4%
CINA Shelter	1,634	508	31%	36%	502	99%	6	1%
CINA Non-Shelter	279	106	38%	46%	101	95%	5	5%
TPR	361	125	35%	45%	123	98%	2	2%

*Excludes cases with no postponements and no postponement reasons listed.

**Total number of cases in which the number of postponement reasons provided matches the postponement count.

***Total number of cases in which the number of postponement reasons provided does not match the postponement count.

Suspensions

The Maryland Judiciary's case time standards provide for the suspension of case time if certain events occur that take away the courts' ability to move the case. The Assessment Application extracts suspension start and suspension stop dates from county source systems or statewide databases (known as MDEC and UCS). The Administrative Office of the Courts asks county court staff to review and, if necessary, correct suspension information contained in Assessment data. As this review is strongly suggested but not mandatory, variation in the completeness and accuracy of suspension information is likely and, as such, suspension data should be interpreted with caution. See Table 8 for the number and rate of suspension events in the circuit courts, and the degree to which they contain valid data (i.e., no missing suspension start or stop dates and a positive value for the time from suspension start to suspension stop).

Less than 1% of Limited Divorce, CINA Shelter, CINA Non-Shelter, and TPR cases contained a suspension event in Fiscal Year 2016. As in the past three years, the highest proportion of cases with suspensions was among Juvenile Delinquency cases, at 29% in Fiscal Year 2016, 31% in Fiscal Year 2015, and 27% in Fiscal Year 2014.

Table 8. Suspensions with Valid and Invalid Data as a Function of Case Type, Circuit Courts, Fiscal Year 2016

Case Type	Fiscal Year 2016 Valid Terminations	Cases with One or More Suspensions (N, %)*	Overall Suspensions		
			Total Suspensions	With Valid Data (N, %)**	Without Valid Data (N, %)***
Criminal	10,388	2,138 (21%)	2,468	2,418 (98%)	50 (2%)
Civil General	8,435	144 (2%)	156	120 (77%)	36 (23%)
Foreclosure	8,760	1,712 (20%)	2,087	1,691 (81%)	396 (19%)
Family Law	10,893	932 (9%)	1,032	1,009 (98%)	23 (2%)
Limited Divorce	2,277	12 (<1%)	12	6 (50%)	6 (50%)
Juvenile Delinquency	5,436	1,572 (29%)	1,903	1,709 (90%)	194 (10%)
CINA Shelter	1,634	10 (<1%)	12	9 (75%)	3 (25%)
CINA Non-Shelter	279	1 (<1%)	1	1 (100%)	0 (0%)
TPR	361	1 (<1%)	1	1 (100%)	0 (0%)
Total	48,463	6,522 (13%)	7,672	6,964 (91%)	708 (9%)

*Percent of valid terminations.

**Suspensions with no missing start or stop dates and with a positive number for the time from suspension start to suspension stop. Percent of total suspensions.

***Suspensions missing either a suspension start or stop date, or the time from suspension start to suspension stop was a negative number. Percent of total suspensions.

Detail on the nature of suspensions with “invalid” data (i.e., missing a suspension start or stop date or with a negative suspension time recorded) by case type in Fiscal Year 2016 is provided in Table 9. Tables 10 through 18 on pages 12 through 15 present the statewide number of valid and invalid suspensions, by event, for each of the circuit court case types in Fiscal Year 2016. As detailed in Table 9, CINA Non-Shelter and TPR cases each contained entirely valid suspension data in Fiscal Year 2016 (as they did in Fiscal Year 2015).

Table 9. Invalid Suspension Data as a Function of Case Type, Circuit Courts, FY 2016

Case Type	Without Valid Data (N, %)*	Suspensions with Invalid Data by Error Type		
		Missing Stop Date (N, %)**	Missing Start Date (N, %)**	Negative Suspension Time (N, %)**
Criminal	50 (2%)	28 (56%)	20 (40%)	2 (4%)
Civil General	36 (23%)	34 (94%)	2 (6%)	0 (0%)
Foreclosure	396 (19%)	382 (96%)	2 (<1%)	12 (3%)
Family Law	23 (2%)	3 (3%)	0 (0%)	20 (87%)
Limited Divorce	6 (50%)	5 (83%)	1 (17%)	0 (0%)
Juvenile Delinquency	194 (10%)	151 (78%)	36 (19%)	7 (3%)
CINA Shelter	3 (25%)	3 (100%)	0 (0%)	0 (0%)
CINA Non-Shelter	-	-	-	-
TPR	-	-	-	-
Total	708 (9%)	606 (86%)	61 (8%)	41 (6%)

*Percent of total suspensions.

**Percent of invalid suspensions.

Table 10. Suspension Data for Criminal Cases, Circuit Courts, FY 2016

Suspension Event	Total Suspensions N	Valid Suspensions N (%)*	Invalid Suspensions N (%)*	Invalid Suspensions		
				Missing Stop N (%)**	Missing Start N (%)**	Negative Suspension Time N (%)**
FTA 1	1,962	1,958 (>99%)	4 (<1%)	2 (50%)	0 (0%)	2 (50%)
FTA 2	223	223 (100%)	0 (0%)	-	-	-
FTA 3	20	20 (100%)	0 (0%)	-	-	-
Mistrial	19	14 (100%)	5 (26%)	5 (100%)	0 (0%)	0 (0%)
NCR Evaluation	49	44 (90%)	5 (10%)	5 (100%)	0 (0%)	0 (0%)
Reverse Waiver Petition	43	39 (91%)	4 (8%)	4 (100%)	0 (0%)	0 (0%)
Competency Evaluation***	93	90 (97%)	3 (3%)	1 (33%)	2 (67%)	0 (0%)
Interlocutory Appeal	12	2 (17%)	10 (83%)	2 (20%)	8 (80%)	0 (0%)
Military Leave	0	-	-	-	-	-
Problem-Solving Court Diversion	6	6 (100%)	0 (0%)	-	-	-
DNA/Forensic Evidence	12	7 (58%)	5 (42%)	5 (100%)	0 (0%)	0 (0%)
Psychological Evaluation	29	15 (52%)	14 (48%)	4 (29%)	10 (71%)	0 (0%)
Total	2,468	2,418 (98%)	50 (2%)	28 (56%)	20 (40%)	2 (4%)

* Percent of total suspensions. ** Percent of invalid suspensions, by suspension event.

***Includes both the original and additional competency evaluation suspension date fields.

Table 11. Suspension Data for Civil General Cases, Circuit Courts, FY 2016

<i>Suspension Event</i>	<i>Total Suspensions N</i>	<i>Valid Suspensions N, (%)*</i>	<i>Invalid Suspensions N, (%)*</i>	<i>Missing Stop Date N, (%)**</i>	<i>Missing Start Date N, (%)**</i>	<i>Negative Suspension Time N, (%)**</i>
Bankruptcy***	113	84 (74%)	29 (26%)	29 (100%)	0 (0%)	0 (0%)
Non-Binding Arbitration	6	4 (67%)	2 (33%)	2 (100%)	0 (0%)	0 (0%)
Interlocutory Appeal	13	8 (62%)	5 (38%)	3 (60%)	2 (40%)	0 (0%)
Military Leave	0	-	-	-	-	-
FTA 1	21	21 (100%)	0 (0%)	-	-	-
FTA 2	2	2 (100%)	0 (0%)	-	-	-
FTA 3	1	1 (100%)	0 (0%)	-	-	-
Mistrial	0	-	-	-	-	-
Receivership	0	-	-	-	-	-
Total	156	120 (77%)	36 (23%)	34 (94%)	2 (6%)	0 (0%)

*Percent of total suspensions, by suspension event.

**Percent of invalid suspensions, by suspension event.

***Includes both the original and additional bankruptcy suspension date fields.

Table 12. Suspension Data for Foreclosure Cases, Circuit Courts, FY 2016

<i>Suspension Event</i>	<i>Total Suspensions N</i>	<i>Valid Suspensions N, (%)*</i>	<i>Invalid Suspensions N, (%)*</i>	<i>Missing Stop Date N, (%)**</i>	<i>Missing Start Date N, (%)**</i>	<i>Negative Suspension Time N, (%)**</i>
Bankruptcy***	890	694 (78%)	196 (22%)	183 (93%)	1 (1%)	12 (6%)
Foreclosure Mediation	1,177	982 (83%)	195 (17%)	194 (99%)	1 (1%)	0 (0%)
Non-Binding Arbitration	2	1 (50%)	1 (50%)	1 (100%)	0 (%)	0 (0%)
Interlocutory Appeal	18	14 (78%)	4 (22%)	4 (100%)	0 (0%)	0 (0%)
Military Leave	0	-	-	-	-	-
FTA 1	0	-	-	-	-	-
FTA 2	0	-	-	-	-	-
FTA 3	0	-	-	-	-	-
Mistrial	0	-	-	-	-	-
Receivership	0	-	-	-	-	-
Total	2,087	1,691 (81%)	396 (19%)	382 (96%)	2 (<1%)	12 (3%)

*Percent of total suspensions, by suspension event.

**Percent of invalid suspensions, by suspension event.

***Includes both the original and additional bankruptcy suspension date fields.

Table 13. Suspension Data for Family Law Cases, Circuit Courts, FY 2016

<i>Suspension Event</i>	<i>Total Suspensions N</i>	<i>Valid Suspensions N, (%)*</i>	<i>Invalid Suspensions N, (%)*</i>	<i>Missing Stop Date N, (%)**</i>	<i>Missing Start Date N, (%)**</i>	<i>Negative Suspension Time N, (%)**</i>
Bankruptcy	2	1 (50%)	1 (50%)	1 (100%)	0 (0%)	0 (0%)
Interlocutory Appeal	1	0 (0%)	1 (100%)	1 (100%)	0 (0%)	0 (0%)
Military Leave	0	-	-	-	-	-
FTA 1	180	180 (100%)	0 (0%)	-	-	-
FTA 2	38	38 (100%)	0 (0%)	-	-	-
FTA 3	3	3 (100%)	0 (0%)	-	-	-
No Service in Child Support after 90 days	807	786 (97%)	21 (3%)	1 (5%)	0 (0%)	20 (95%)
Collaborative Law	1	1 (100%)	0 (0%)	-	-	-
Receivership	0	-	-	-	-	-
Total	1,032	1,009 (98%)	23 (2%)	3 (3%)	0 (0%)	20 (87%)

* Percent of total suspensions. ** Percent of invalid suspensions, by suspension event.

Table 14. Suspension Data for Limited Divorce Cases, Circuit Courts, FY 2016

<i>Suspension Event</i>	<i>Total Suspensions N</i>	<i>Valid Suspensions N, (%)*</i>	<i>Invalid Suspensions N, (%)*</i>	<i>Missing Stop Date N, (%)**</i>	<i>Missing Start Date N, (%)**</i>	<i>Negative Suspension Time N, (%)**</i>
Bankruptcy	4	1 (25%)	3 (75%)	2 (67%)	1 (33%)	0 (0%)
Interlocutory Appeal	6	3 (50%)	3 (50%)	3 (100%)	0 (0%)	0 (0%)
Military Leave	0	-	-	-	-	-
FTA 1	2	2 (100%)	-	-	-	-
FTA 2	0	-	-	-	-	-
FTA 3	0	-	-	-	-	-
No Service in Child Support after 90 days	0	-	-	-	-	-
Collaborative Law	0	-	-	-	-	-
Receivership	0	-	-	-	-	-
Total	12	6 (50%)	6 (50%)	5 (83%)	1 (17%)	0 (0%)

* Percent of total suspensions. ** Percent of invalid suspensions, by suspension event.

Table 15. Suspension Data for Juvenile Delinquency Cases, Circuit Courts, FY 2016

<i>Suspension Event</i>	<i>Total Suspensions N</i>	<i>Valid Suspensions N, (%)*</i>	<i>Invalid Suspensions N, (%)*</i>	<i>Missing Stop Date N, (%)**</i>	<i>Missing Start Date N, (%)**</i>	<i>Negative Suspension Time N, (%)**</i>
FTA 1	456	452 (99%)	4 (1%)	0 (0%)	0 (0%)	4 (100%)
FTA 2	61	61 (100%)	-	-	-	-
FTA 3	9	8 (89%)	1 (11%)	0 (0%)	0 (0%)	1 (100%)
Military Leave	0	-	-	-	-	-
Competency Evaluation	86	79 (92%)	7 (8%)	6 (86%)	-	1 (14%)
Mistrial	0	-	-	-	-	-
Waiver to Adult Court	197	154 (78%)	43 (22%)	40 (93%)	3 (7%)	0 (0%)
Interlocutory Appeal	0	-	-	-	-	-
Pre-Disposition Treatment Program	116	115 (99%)	1 (1%)	1 (100%)	-	-
PDI Order	800	688 (86%)	112 (14%)	94 (84%)	18 (16%)	0 (0%)
Psychological Evaluation	172	147 (95%)	25 (5%)	10 (40%)	14 (56%)	1 (4%)
DNA/Forensic Evidence	6	5 (83%)	1 (17%)	0 (0%)	1 (100%)	0 (0%)
Total	1,903	1,709 (90%)	194 (10%)	151 (78%)	36 (19%)	7 (3%)

* Percent of total suspensions. ** Percent of invalid suspensions, by suspension event.

Table 16. Suspension Data for CINA Shelter Cases, Circuit Courts, FY 2016

<i>Suspension Event</i>	<i>Total Suspensions N</i>	<i>Valid Suspensions N, (%)*</i>	<i>Invalid Suspensions N, (%)*</i>	<i>Missing Stop Date N, (%)**</i>	<i>Missing Start Date N, (%)**</i>	<i>Negative Suspension Time N, (%)**</i>
Military Leave	0	-	-	-	-	-
FTA/Body Attachment 1	10	7 (70%)	3 (30%)	3 (100%)	0 (0%)	0 (0%)
FTA/Body Attachment 2	2	2 (100%)	-	-	-	-
FTA/Body Attachment 3	0	-	-	-	-	-
Total	12	9 (75%)	3 (25%)	3 (100%)	0 (0%)	0 (0%)

* Percent of total suspensions. ** Percent of invalid suspensions, by suspension event.

Table 17. Suspension Data for CINA Non-Shelter Cases, Circuit Courts, FY 2016

<i>Suspension Event</i>	<i>Total Suspensions N</i>	<i>Valid Suspensions N, (%)*</i>	<i>Invalid Suspensions N, (%)*</i>	<i>Missing Stop Date N, (%)**</i>	<i>Missing Start Date N, (%)**</i>	<i>Negative Suspension Time N, (%)**</i>
Military Leave	0	-	-	-	-	-
FTA/Body Attachment 1	1	1 (100%)	0 (0%)	-	-	-
FTA/Body Attachment 2	0	-	-	-	-	-
FTA/Body Attachment 3	0	-	-	-	-	-
Total	1	1 (100%)	0 (0%)	-	-	-

* Percent of total suspensions. ** Percent of invalid suspensions, by suspension event.

Table 18. Suspension Data for TPR Cases, Circuit Courts, FY 2016

<i>Suspension Event</i>	<i>Total Suspensions N</i>	<i>Valid Suspensions N, (%)*</i>	<i>Invalid Suspensions N, (%)*</i>	<i>Missing Stop Date N, (%)**</i>	<i>Missing Start Date N, (%)**</i>	<i>Negative Suspension Time N, (%)**</i>
Interlocutory Appeal	1	1 (100%)	0 (0%)	-	-	-
Military Leave	0	-	-	-	-	-
Total	1	1 (100%)	0 (0%)	-	-	-

* Percent of total suspensions. ** Percent of invalid suspensions, by suspension event.

Appendix A:

Circuit Courts

Within-Standard Percentages

&

Overall and Over-Standard Average and Median Case Processing Times, by Case Type and Jurisdiction

Table A-1. Percent of Cases Terminated Within Standard by Case Type and Jurisdiction, FY 2016

Jurisdiction	Jurisdiction Size	Criminal	Civil General	Foreclosure	Family Law	Limited Divorce	Juvenile Delinquency	CINA Shelter	CINA Non-Shelter	TPR
Allegany	Small	99%	98%	99%	96%	100%	99%	98%	100%	67%
Anne Arundel	Large	87%	99%	100%	91%	100%	100%	100%	100%	95%
Baltimore City	Large	79%	96%	97%	82%	79%	96%	71%	--	63%
Baltimore County	Large	89%	92%	92%	86%	84%	93%	58%	64%	69%
Calvert	Medium	92%	92%	97%	93%	96%	90%	45%	100%	0%
Caroline	Small	‡	‡	‡	‡	‡	‡	‡	‡	‡
Carroll	Med.-Large	89%	93%	90%	95%	100%	93%	84%	50%	50%
Cecil	Medium	‡	‡	‡	‡	‡	‡	‡	‡	‡
Charles	Med.-Large	91%	95%	95%	95%	100%	100%	97%	100%	100%
Dorchester	Small	‡	‡	‡	‡	‡	‡	‡	‡	‡
Frederick	Med.-Large	97%	97%	98%	97%	100%	98%	93%	100%	100%
Garrett	Small	76%	90%	96%	83%	100%	78%	57%	0%	0%
Harford	Med.-Large	72%	84%	90%	82%	87%	85%	69%	67%	45%
Howard	Med.-Large	96%	99%	96%	97%	100%	98%	94%	100%	100%
Kent	Small	‡	‡	‡	‡	‡	‡	‡	‡	‡
Montgomery	Large	94%	97%	96%	95%	98%	94%	77%	92%	100%
Prince George's	Large	92%	93%	93%	89%	100%	100%	99%	100%	43%
Queen Anne's	Small	‡	‡	‡	‡	‡	‡	‡	‡	‡
Somerset	Small	‡	‡	‡	‡	‡	‡	‡	‡	‡
St. Mary's	Medium	86%	94%	96%	93%	91%	87%	79%	--	86%
Talbot	Small	‡	‡	‡	‡	‡	‡	‡	‡	‡
Washington	Med.-Large	88%	96%	97%	98%	97%	92%	89%	84%	100%
Wicomico	Medium	‡	‡	‡	‡	‡	‡	‡	‡	‡
Worcester	Medium	‡	‡	‡	‡	‡	‡	‡	‡	‡
Statewide*		87%	95%	95%	91%	94%	95%	75%	85%	68%

Source: Maryland Judiciary Assessment Application (December 20, 2016 and May 2017).

--" denotes jurisdictions for which no cases of a certain type were terminated in Fiscal Year 2015.

‡ The Circuit Courts on the Upper and Lower Eastern Shore were excused from conducting a data quality review for the Fiscal Year 2016 analysis of case processing performance. Therefore, their individual results are not presented.

*Statewide average is weighted based on the number of terminations reported to the State for each jurisdiction.

Table A-2. Percent of Cases Terminated Within Standard by Case Type and Jurisdiction Size, FY 2016

Jurisdiction	Criminal	Civil General	Foreclosure	Family Law	Limited Divorce	Juvenile Delinquency	CINA Shelter	CINA Non-Shelter	TPR
Small									
Allegany	99%	98%	99%	96%	100%	99%	98%	100%	67%
Caroline	‡	‡	‡	‡	‡	‡	‡	‡	‡
Dorchester	‡	‡	‡	‡	‡	‡	‡	‡	‡
Garrett	76%	90%	96%	83%	100%	78%	57%	0%	0%
Kent	‡	‡	‡	‡	‡	‡	‡	‡	‡
Queen Anne's	‡	‡	‡	‡	‡	‡	‡	‡	‡
Somerset	‡	‡	‡	‡	‡	‡	‡	‡	‡
Talbot	‡	‡	‡	‡	‡	‡	‡	‡	‡
Small Overall*	95%	95%	96%	96%	100%	89%	55%	65%	33%
Medium									
Calvert	92%	92%	97%	93%	96%	90%	45%	100%	0%
Cecil	‡	‡	‡	‡	‡	‡	‡	‡	‡
St. Mary's	86%	94%	96%	93%	91%	87%	79%	-	86%
Wicomico	‡	‡	‡	‡	‡	‡	‡	‡	‡
Worcester	‡	‡	‡	‡	‡	‡	‡	‡	‡
Medium Overall*	91%	95%	97%	96%	97%	93%	81%	96%	54%
Medium-Large									
Carroll	89%	93%	90%	95%	100%	93%	84%	50%	50%
Charles	91%	95%	95%	95%	100%	100%	97%	100%	100%
Frederick	97%	97%	98%	97%	100%	98%	93%	100%	100%
Harford	72%	84%	90%	82%	87%	85%	69%	67%	45%
Howard	96%	99%	96%	97%	100%	98%	94%	100%	100%
Washington	88%	96%	97%	98%	97%	92%	89%	84%	100%
Medium-Large Overall*	88%	95%	94%	94%	96%	94%	82%	85%	82%
Large									
Anne Arundel	87%	99%	100%	91%	100%	100%	100%	100%	95%
Baltimore City	79%	96%	97%	82%	79%	96%	71%	--	63%
Baltimore County	89%	92%	92%	86%	84%	93%	58%	64%	69%
Montgomery	94%	97%	96%	95%	98%	94%	77%	92%	100%
Prince George's	92%	93%	93%	89%	100%	100%	99%	100%	43%
Large Overall*	86%	95%	95%	89%	93%	96%	73%	85%	70%

Source: Maryland Judiciary Assessment Application (December 20, 2016 and May 2017). ‡The circuit courts on the upper and lower eastern shore were excused from conducting a data quality review for the Fiscal Year 2016 analysis of case processing performance. Therefore, their individual results are not presented. *Jurisdiction size-specific averages are weighted based on the number of terminations reported to the State for each jurisdiction.

Table A-3. Overall (Total) and Over-Standard (OST) Average Case Processing Time in Days by Case Type and Jurisdiction (Weighted), FY 2016

Jurisdiction	Criminal		Civil General		Foreclosure		Family Law		Limited Divorce		Juvenile Delinquency		CINA Shelter		CINA Non-Shelter		TPR	
	Total	OST	Total	OST	Total	OST	Total	OST	Total	OST	Total	OST	Total	OST	Total	OST	Total	OST
Allegany	66	210	177	667	317	947	158	451	189	--	28	105	24	38	40	--	159	191
Anne Arundel	113	263	234	640	317		183	429	271	--	28	--	24	--	15	--	163	268
Baltimore City	118	352	259	648	348	841	224	589	411	993	48	199	38	76	--	--	198	292
Baltimore County	100	261	241	790	389	869	211	628	440	989	44	130	42	70	56	99	151	281
Calvert	88	282	251	795	323	840	160	456	288	1037	43	142	35	46	55	--	339	340
Caroline	‡	‡	‡	‡	‡	‡	‡	‡	‡	‡	‡	‡	‡	‡	‡	‡	‡	‡
Carroll	98	301	239	777	466	917	173	465	242	--	51	171	28	51	52	86	157	186
Cecil	‡	‡	‡	‡	‡	‡	‡	‡	‡	‡	‡	‡	‡	‡	‡	‡	‡	‡
Charles	132	289	256	741	354	1235	167	532	237	--	30	149	24	57	33	--	138	--
Dorchester	‡	‡	‡	‡	‡	‡	‡	‡	‡	‡	‡	‡	‡	‡	‡	‡	‡	‡
Frederick	81	256	203	776	309	940	146	438	279	--	36	111	30	75	46	--	144	--
Garrett	144	241	251	987	320	989	211	543	359	--	59	190	108	221	2,377	2,377	1,077	1,077
Harford	146	321	294	795	387	916	226	729	409	1,050	56	137	36	63	47	84	211	300
Howard	86	247	168	651	359	874	145	520	219	--	35	124	23	42	25	--	134	--
Kent	‡	‡	‡	‡	‡	‡	‡	‡	‡	‡	‡	‡	‡	‡	‡	‡	‡	‡
Montgomery	76	265	188	705	319	898	133	452	318	771	51	137	31	64	40	77	144	
Prince George's	106	290	288	677	417	926	201	564	242	--	35	122	25	49	42	--	205	266
Queen Anne's	‡	‡	‡	‡	‡	‡	‡	‡	‡	‡	‡	‡	‡	‡	‡	‡	‡	‡
Somerset	‡	‡	‡	‡	‡	‡	‡	‡	‡	‡	‡	‡	‡	‡	‡	‡	‡	‡
St. Mary's	108	277	245	714	387	919	145	488	355	954	51	168	27	35	--	--	160	211
Talbot	‡	‡	‡	‡	‡	‡	‡	‡	‡	‡	‡	‡	‡	‡	‡	‡	‡	‡
Washington	110	262	215	687	333	874	124	433	283	882	37	155	26	60	34	66	130	--
Wicomico	‡	‡	‡	‡	‡	‡	‡	‡	‡	‡	‡	‡	‡	‡	‡	‡	‡	‡
Worcester	‡	‡	‡	‡	‡	‡	‡	‡	‡	‡	‡	‡	‡	‡	‡	‡	‡	‡
Statewide	106	289	238	698	369	901	176	531	314	936	43	153	37	71	57	113	191	313

Source: Maryland Judiciary Assessment Application (December 20, 2016 and May 2017). ‡The circuit courts on the upper and lower eastern shore were excused from conducting a data quality review for the Fiscal Year 2016 analysis of case processing performance. Therefore, their individual results are not presented.

Table A-4. Overall and Over-Standard Average Case Processing Time in Days, by Case Type/Jurisdiction Size (Weighted), FY 2016

Jurisdiction	Criminal		Civil General		Foreclosure		Family Law		Limited Divorce		Juvenile Delinquency		CINA Shelter		CINA Non-Shelter		TPR	
	Total	OST	Total	OST	Total	OST	Total	OST	Total	OST	Total	OST	Total	OST	Total	OST	Total	OST
Small																		
Allegany	66	210	177	667	317	947	158	451	189	--	28	105	24	38	40	--	159	191
Caroline	‡	‡	‡	‡	‡	‡	‡	‡	‡	‡	‡	‡	‡	‡	‡	‡	‡	‡
Dorchester	‡	‡	‡	‡	‡	‡	‡	‡	‡	‡	‡	‡	‡	‡	‡	‡	‡	‡
Garrett	144	241	251	987	320	989	211	543	359	--	59	190	108	221	2,377	2,377	1,077	1,077
Kent	‡	‡	‡	‡	‡	‡	‡	‡	‡	‡	‡	‡	‡	‡	‡	‡	‡	‡
Queen Anne's	‡	‡	‡	‡	‡	‡	‡	‡	‡	‡	‡	‡	‡	‡	‡	‡	‡	‡
Somerset	‡	‡	‡	‡	‡	‡	‡	‡	‡	‡	‡	‡	‡	‡	‡	‡	‡	‡
Talbot	‡	‡	‡	‡	‡	‡	‡	‡	‡	‡	‡	‡	‡	‡	‡	‡	‡	‡
Small, Overall	98	246	186	587	348	906	144	479	187	--	51	181	86	170	301	739	378	432
Medium																		
Calvert	88	282	251	795	323	840	160	456	288	1,037	43	142	35	46	55	--	339	340
Cecil	‡	‡	‡	‡	‡	‡	‡	‡	‡	‡	‡	‡	‡	‡	‡	‡	‡	‡
St. Mary's	108	277	245	714	387	919	145	488	355	954	51	168	27	35	--	--	160	211
Wicomico	‡	‡	‡	‡	‡	‡	‡	‡	‡	‡	‡	‡	‡	‡	‡	‡	‡	‡
Worcester	‡	‡	‡	‡	‡	‡	‡	‡	‡	‡	‡	‡	‡	‡	‡	‡	‡	‡
Medium, Overall	100	252	210	706	348	855	141	556	271	933	39	142	30	48	40	--	216	264
Medium-Large																		
Carroll	98	301	239	777	466	917	173	465	248	--	51	171	28	51	52	86	157	186
Charles	132	289	256	741	354	1,235	167	532	237	--	29	149	24	57	33	--	138	--
Frederick	81	256	203	776	309	940	146	438	279	--	36	111	30	75	46	--	144	--
Harford	146	321	294	795	387	916	226	729	409	1,050	56	137	36	63	47	84	211	300
Howard	96	247	168	651	359	874	145	520	219	--	35	124	23	42	25	--	134	--
Washington	100	262	215	687	333	874	124	433	283	882	37	155	26	60	34	66	130	--
Medium-Large, Overall	110	280	220	726	367	965	162	523	293	1,023	40	137	30	62	39	74	160	291
Large																		
Anne Arundel	113	263	234	640	317		183	429	271	--	28	--	24	--	15	--	163	268
Baltimore City	118	352	259	648	348	841	334	559	411	993	48	199	38	76	--	--	198	292
Baltimore County	100	261	241	790	389	869	211	628	440	989	44	130	42	70	56	99	151	281
Montgomery	76	265	188	705	319	898	133	452	318	771	51	137	31	64	40	77	144	
Prince George's	106	290	288	677	417	926	201	564	242	--	35	122	25	49	42	--	205	266
Large, Overall	107	301	247	691	363	896	188	529	343	913	44	159	36	71	43	90	180	285

Source: Maryland Judiciary Assessment Application (December 20, 2016 and May 2017). ‡The circuit courts on the upper and lower eastern shore were excused from conducting a data quality review for the Fiscal Year 2016 analysis of case processing performance. Therefore, their individual results are not presented.

Table A-5. Overall and Over-Standard Median Case Processing Time in Days, by Case Type and Jurisdiction (Weighted), FY 2016

Jurisdiction	Criminal		Civil General		Foreclosure		Family Law		Limited Divorce		Juvenile Delinquency		CINA Shelter		CINA Non-Shelter		TPR	
	Total	OST	Total	OST	Total	OST	Total	OST	Total	OST	Total	OST	Total	OST	Total	OST	Total	OST
Allegany	54	208	155	584	296	947	123	427	150	--	28	105	23	38	39	--	177	191
Anne Arundel	101	233	231	598	308		162	405	265	--	29	--	25	--	11	--	161	268
Baltimore City	57	299	231	602	319	813	182	493	294	837	42	180	27	62	--	--	173	237
Baltimore County	77	237	195	682	355	824	148	551	387	904	35	111	28	52	42	97	129	271
Calvert	73	270	189	719	284	821	123	449	212	1037	35	109	34	41	55	--	316	316
Caroline	‡	‡	‡	‡	‡	‡	‡	‡	‡	‡	‡	‡	‡	‡	‡	‡	‡	‡
Carroll	69	280	198	748	462	838	168	439	240	--	42	158	25	43	58	86	157	186
Cecil	‡	‡	‡	‡	‡	‡	‡	‡	‡	‡	‡	‡	‡	‡	‡	‡	‡	‡
Charles	135	254	225	708	299	945	133	480	230	--	28	149	23	57	36	--	144	--
Dorchester	‡	‡	‡	‡	‡	‡	‡	‡	‡	‡	‡	‡	‡	‡	‡	‡	‡	‡
Frederick	68	237	177	621	271	942	108	396	271	--	32	111	28	75	50	--	149	--
Garrett	140	220	183	956	317	915	151	540	341	--	24	147	28	49	2,377	2,377	890	891
Harford	112	265	240	730	325	879	126	630	342	1050	42	119	29	55	56	70	213	280
Howard	75	218	112	605	366	823	116	439	237	--	34	126	27	42	26	--	124	--
Kent	‡	‡	‡	‡	‡	‡	‡	‡	‡	‡	‡	‡	‡	‡	‡	‡	‡	‡
Montgomery	66	230	140	610	287	883	109	408	308	757	52	115	27	49	42	73	154	--
Prince George's	91	257	274	612	434	866	153	506	226	--	29	117	26	49	40	--	201	254
Queen Anne's	‡	‡	‡	‡	‡	‡	‡	‡	‡	‡	‡	‡	‡	‡	‡	‡	‡	‡
Somerset	‡	‡	‡	‡	‡	‡	‡	‡	‡	‡	‡	‡	‡	‡	‡	‡	‡	‡
St. Mary's	99	255	201	610	360	884	108	424	263	775	34	150	28	35	--	--	166	211
Talbot	‡	‡	‡	‡	‡	‡	‡	‡	‡	‡	‡	‡	‡	‡	‡	‡	‡	‡
Washington	88	244	172	674	300	831	90	427	292	882	23	110	23	63	36	66	125	--
Wicomico	‡	‡	‡	‡	‡	‡	‡	‡	‡	‡	‡	‡	‡	‡	‡	‡	‡	‡
Worcester	‡	‡	‡	‡	‡	‡	‡	‡	‡	‡	‡	‡	‡	‡	‡	‡	‡	‡
Statewide	80	255	204	631	350	853	137	476	285	880	36	136	27	56	55	109	167	261

Source: Maryland Judiciary Assessment Application (December 20, 2016 and May 2017). ‡The circuit courts on the upper and lower eastern shore were excused from conducting a data quality review for the Fiscal Year 2016 analysis of case processing performance. Therefore, their individual results are not presented.

Table A-6. Overall and Over-Standard Median Case Processing Time in Days, by Case Type/Jurisdiction Size (Weighted), FY 2016

Jurisdiction	Criminal		Civil General		Foreclosure		Family Law		Limited Divorce		Juvenile Delinquency		CINA Shelter		CINA Non-Shelter		TPR	
	Total	OST	Total	OST	Total	OST	Total	OST	Total	OST	Total	OST	Total	OST	Total	OST	Total	OST
Small																		
Allegany	54	208	155	584	296	947	123	427	150	--	28	105	23	38	39	--	177	191
Caroline	‡	‡	‡	‡	‡	‡	‡	‡	‡	‡	‡	‡	‡	‡	‡	‡	‡	‡
Dorchester	‡	‡	‡	‡	‡	‡	‡	‡	‡	‡	‡	‡	‡	‡	‡	‡	‡	‡
Garrett	140	220	183	956	317	915	151	540	341	--	24	147	28	49	2,377	2,377	890	891
Kent	‡	‡	‡	‡	‡	‡	‡	‡	‡	‡	‡	‡	‡	‡	‡	‡	‡	‡
Queen Anne's	‡	‡	‡	‡	‡	‡	‡	‡	‡	‡	‡	‡	‡	‡	‡	‡	‡	‡
Somerset	‡	‡	‡	‡	‡	‡	‡	‡	‡	‡	‡	‡	‡	‡	‡	‡	‡	‡
Talbot	‡	‡	‡	‡	‡	‡	‡	‡	‡	‡	‡	‡	‡	‡	‡	‡	‡	‡
Small, Overall	93	230	148	657	328	846	121	451	173	--	33	151	31	48	295	739	351	389
Medium																		
Calvert	73	270	189	719	284	821	123	449	212	1037	35	109	34	41	55	--	316	316
Cecil	‡	‡	‡	‡	‡	‡	‡	‡	‡	‡	‡	‡	‡	‡	‡	‡	‡	‡
St. Mary's	99	255	201	610	360	884	108	424	263	775	34	150	28	35		--	166	211
Wicomico	‡	‡	‡	‡	‡	‡	‡	‡	‡	‡	‡	‡	‡	‡	‡	‡	‡	‡
Worcester	‡	‡	‡	‡	‡	‡	‡	‡	‡	‡	‡	‡	‡	‡	‡	‡	‡	‡
Medium, Overall	91	235	165	662	323	841	114	516	234	884	29	123	27	48	41	--	216	262
Medium-Large																		
Carroll	69	280	198	748	462	838	168	439	240	--	42	158	25	43	58	86	157	186
Charles	135	254	225	708	299	945	133	480	230	--	28	149	23	57	36	--	144	--
Frederick	68	237	177	621	271	942	108	396	271	--	32	111	28	75	50	--	149	--
Harford	112	265	240	730	325	879	126	630	342	1050	42	119	29	55	56	70	213	280
Howard	75	218	112	605	366	823	116	439	237	--	34	126	27	42	26	--	124	--
Washington	88	58	172	674	300	831	90	427	292	882	23	110	23	63	36	66	125	--
Medium-Large, Overall	92	222	176	666	332	881	119	470	274	1,023	33	126	26	58	42	69	161	272
Large																		
Anne Arundel	101	233	231	598	308		162	405	265	--	29	--	25	--	11	--	161	268
Baltimore City	57	299	231	602	319	813	182	493	294	837	42	180	27	62	--	--	173	237
Baltimore County	77	237	195	682	355	824	148	551	387	904	35	111	28	52	42	97	129	271
Montgomery	66	230	140	610	287	883	109	408	308	757	52	115	27	49	42	73	154	--
Prince George's	91	257	274	612	434	866	153	506	226	--	29	117	26	49	40	--	201	254
Large, Overall	74	263	217	620	345	856	148	474	309	841	38	141	27	57	38	87	162	250

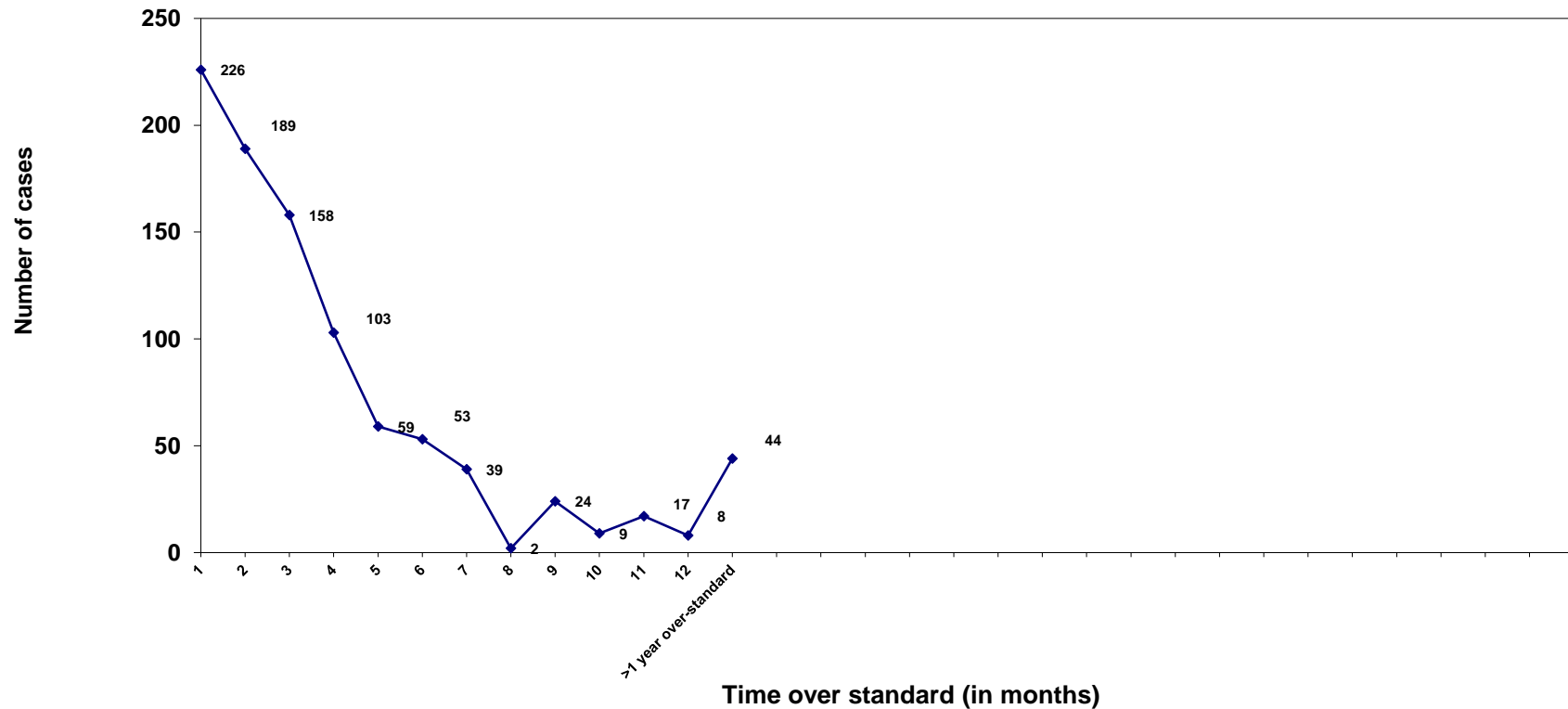
Source: Maryland Judiciary Assessment Application (December 20, 2016 and May 2017). ‡The circuit courts on the upper and lower eastern shore were excused from conducting a data quality review for the Fiscal Year 2016 analysis of case processing performance. Therefore, their individual results are not presented.

Appendix B:

Circuit Courts

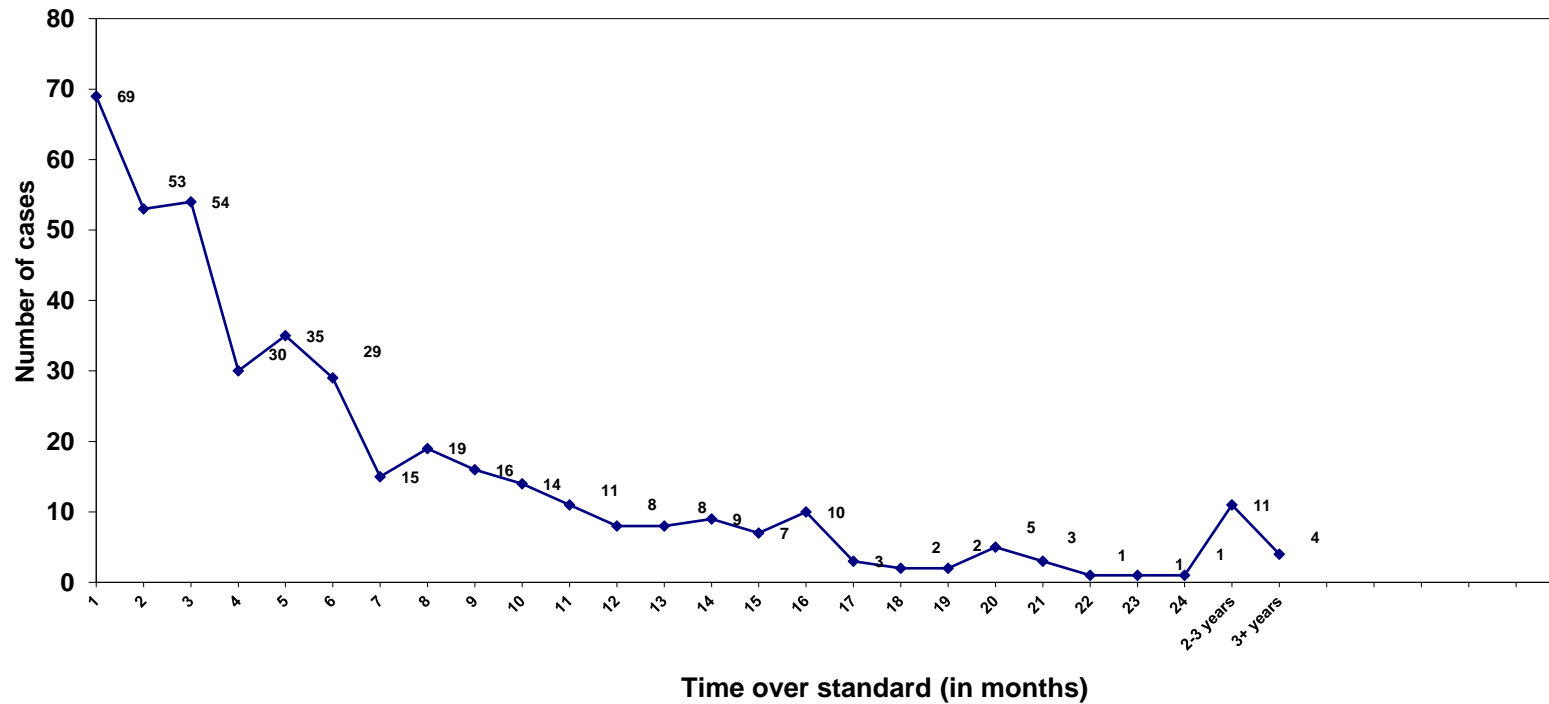
Statewide Distribution of Over-Standard Cases

Figure B-1. Distribution of Over-Standard Criminal Cases (N=949) by the Time Beyond the 180-Day Time Standard, Fiscal Year 2016



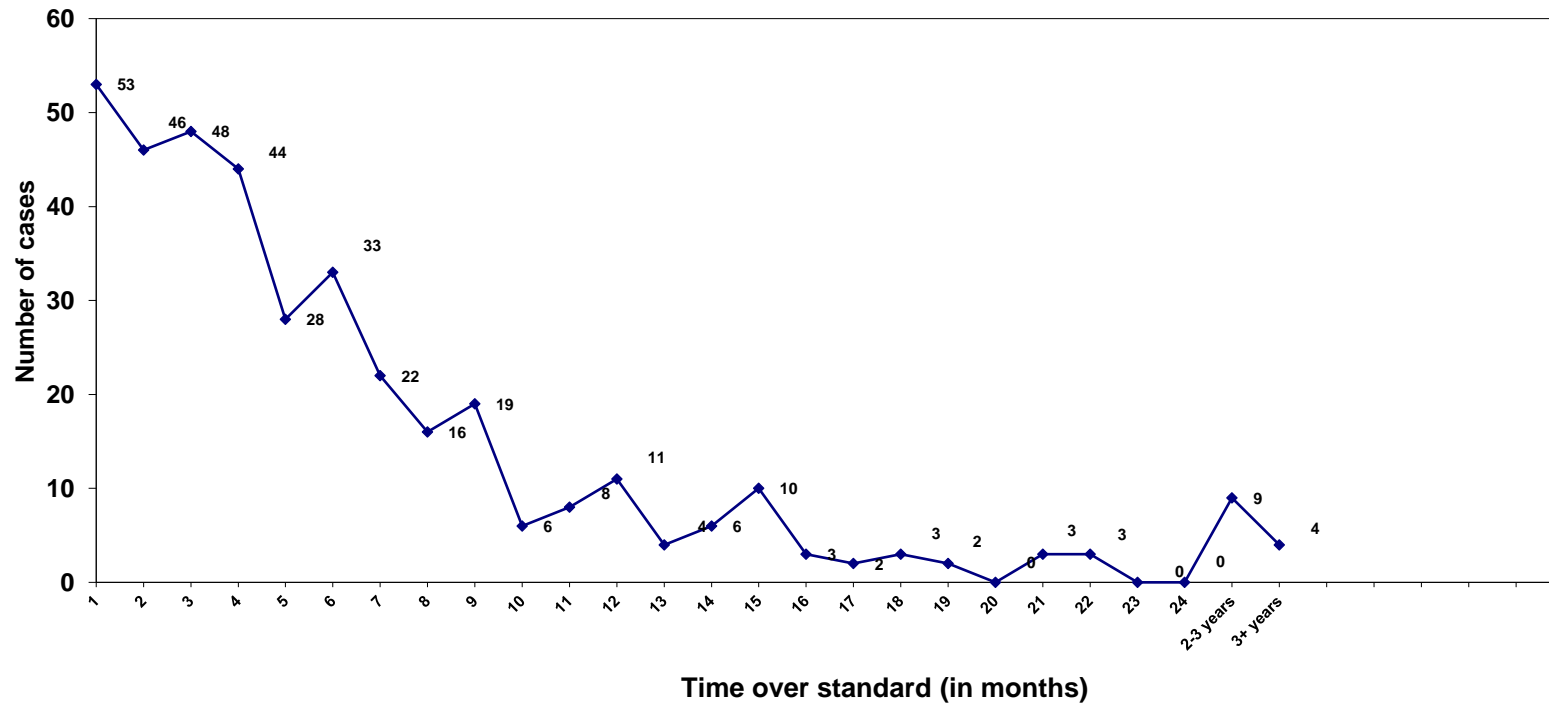
- The average case processing time (weighted)
Overall: 106 days (Fiscal Year 2015: 117 days)
Within-standard cases: 77 days (Fiscal Year 2015: 75 days)
Over-standard cases: 289 days (Fiscal Year 2015: 301 days)
- 6% of the over-standard cases closed within 1 week over standard.
- 24% of the over-standard cases closed within 1 month over standard.
- 50% of the over-standard cases closed within approximately 2.4 months over standard.

Figure B-2. Distribution of Over-Standard Civil General Cases (N=420) by the Time Beyond the 548-Day Time Standard, Fiscal Year 2016



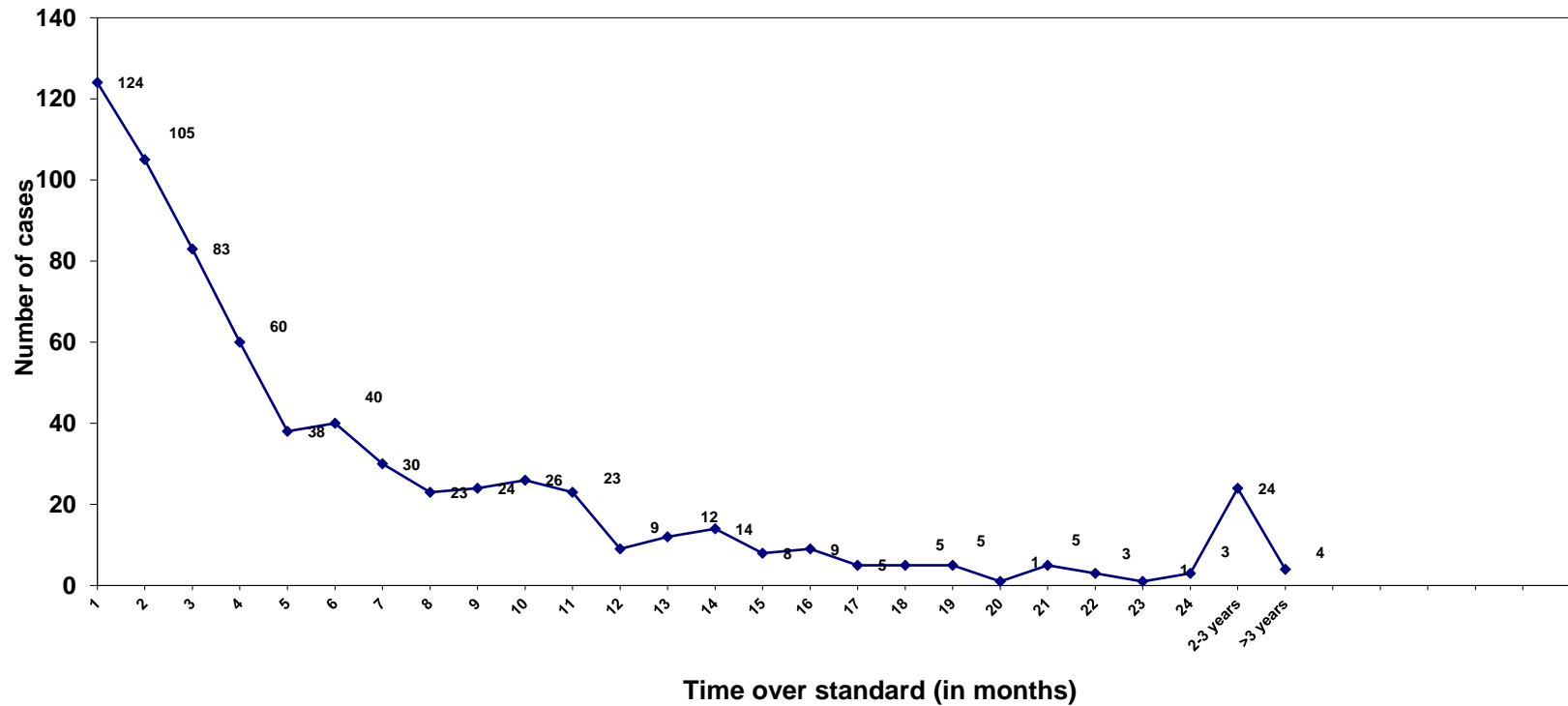
- The average case processing time (weighted)
Overall: 238 days (Fiscal Year 2015: 308 days)
Within-standard cases: 213 days (Fiscal Year 2015: 267 days)
Over-standard cases: 698 days (Fiscal Year 2015: 735 days)
- 5% of the over-standard cases closed within 1 week over standard.
- 16% of the over-standard cases closed within 1 month over standard.
- 50% of the over-standard cases closed within approximately 4.2 months over standard.

Figure B-2. Distribution of Over-Standard Foreclosure Cases (N=383) by the Time Beyond the 548-Day Time Standard, Fiscal Year 2016



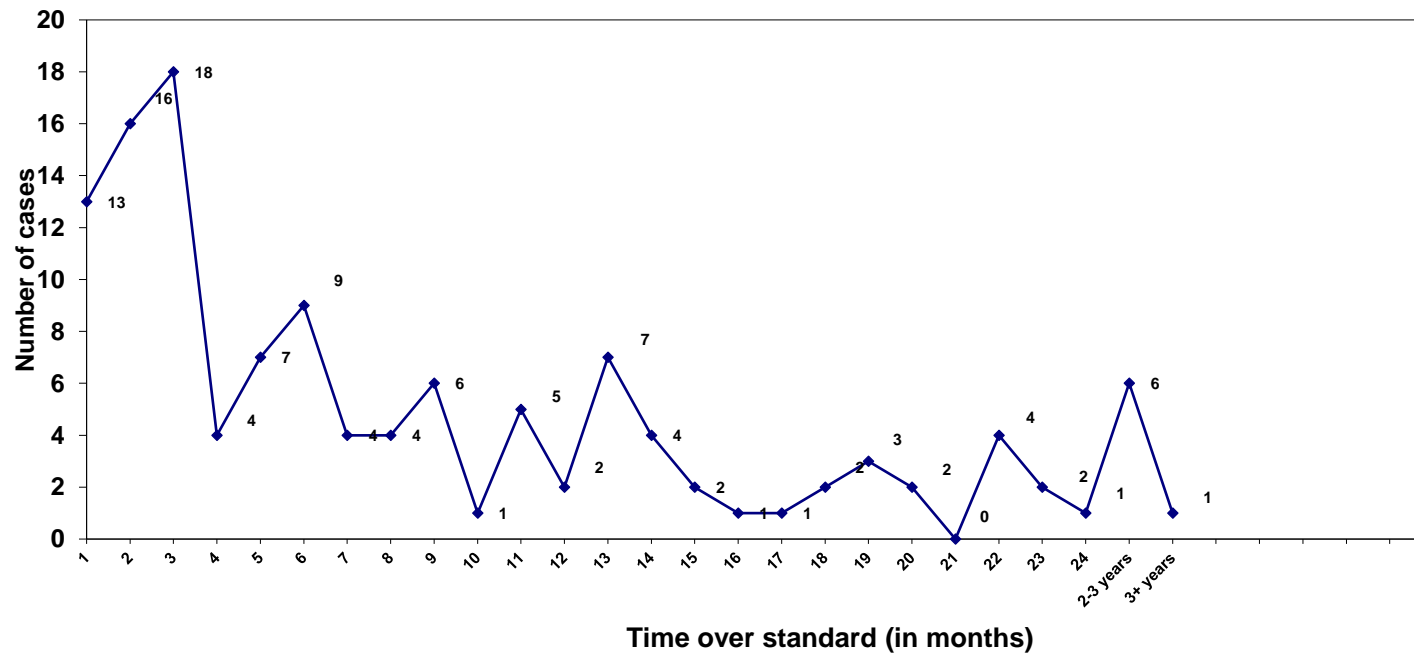
- The average case processing time (weighted)
Overall: 369 days
Within-standard cases: 340 days
Over-standard cases: 901 days
- 4% of the over-standard cases closed within 1 week over standard.
- 14% of the over-standard cases closed within 1 month over standard.
- 50% of the over-standard cases closed within approximately 4 months over standard.

Figure B-3. Distribution of Over-Standard Family Law Cases (N=684) by the Time Beyond the 365-Day Time Standard, Fiscal Year 2016



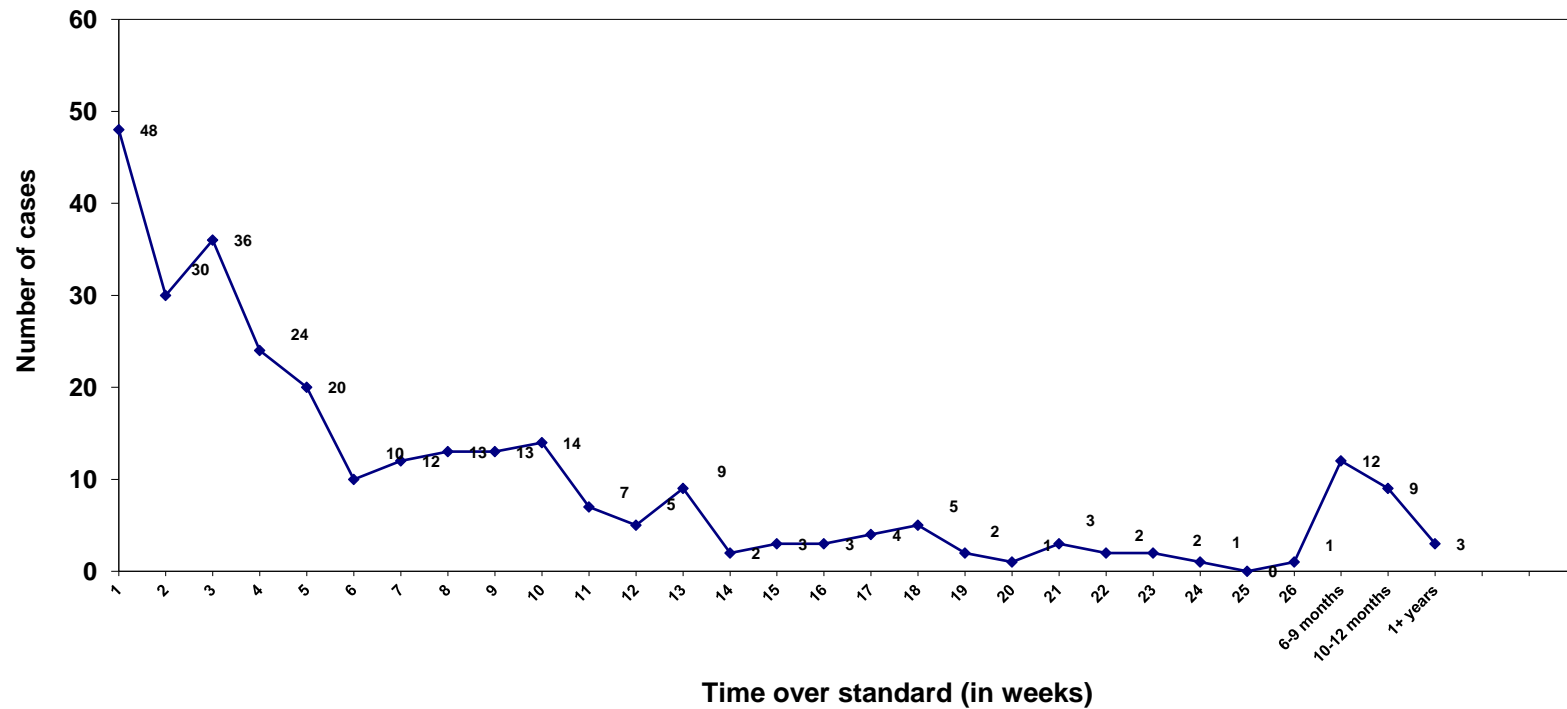
- The average case processing time (weighted)
Overall: 176 days (Fiscal Year 2015: 185 days)
Within-standard cases: 138 days (Fiscal Year 2015: 139 days)
Over-standard cases: 531 days (Fiscal Year 2015: 531 days)
- 5% of the over-standard cases closed within 1 week over standard.
- 18% of the over-standard cases closed within 1 month over standard.
- 50% of the over-standard cases closed within approximately 3.5 months over standard.

Figure B-4. Distribution of Over-Standard Limited Divorce Cases (N=125) by the Time beyond the 730-Day Time Standard, Fiscal Year 2016



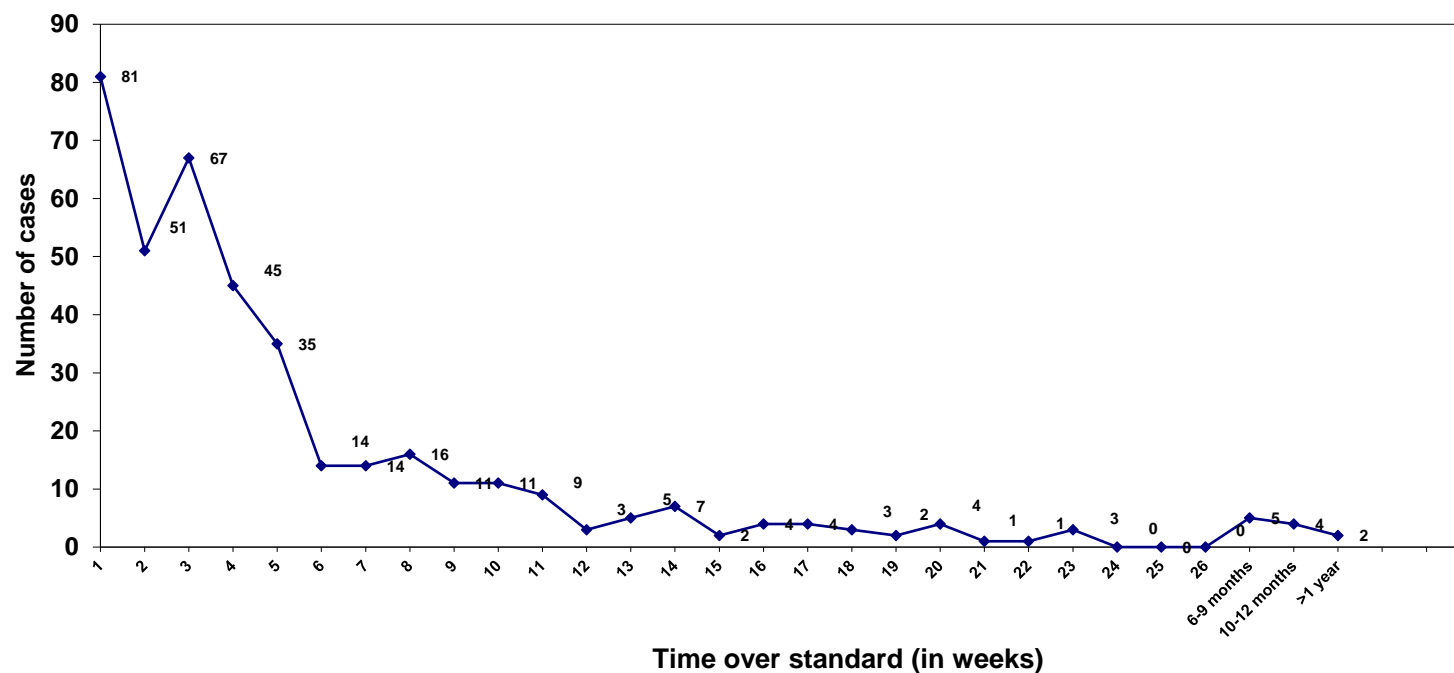
- The average case processing time (weighted)
Overall: 314 days (Fiscal Year 2015: 385 days)
Within-standard cases: 276 days (Fiscal Year 2015: 300 days)
Over-standard cases: 936 days (Fiscal Year 2015: 987 days)
- 4% of the over-standard cases closed within 1 week over standard.
- 10% of the over-standard cases closed within 1 month over standard.
- 50% of the over-standard cases closed within approximately 5.5 months over standard.

Figure B-5. Distribution of Over-Standard Juvenile Delinquency Cases (N=294) by the Time beyond the 90-Day Time Standard, Fiscal Year 2016



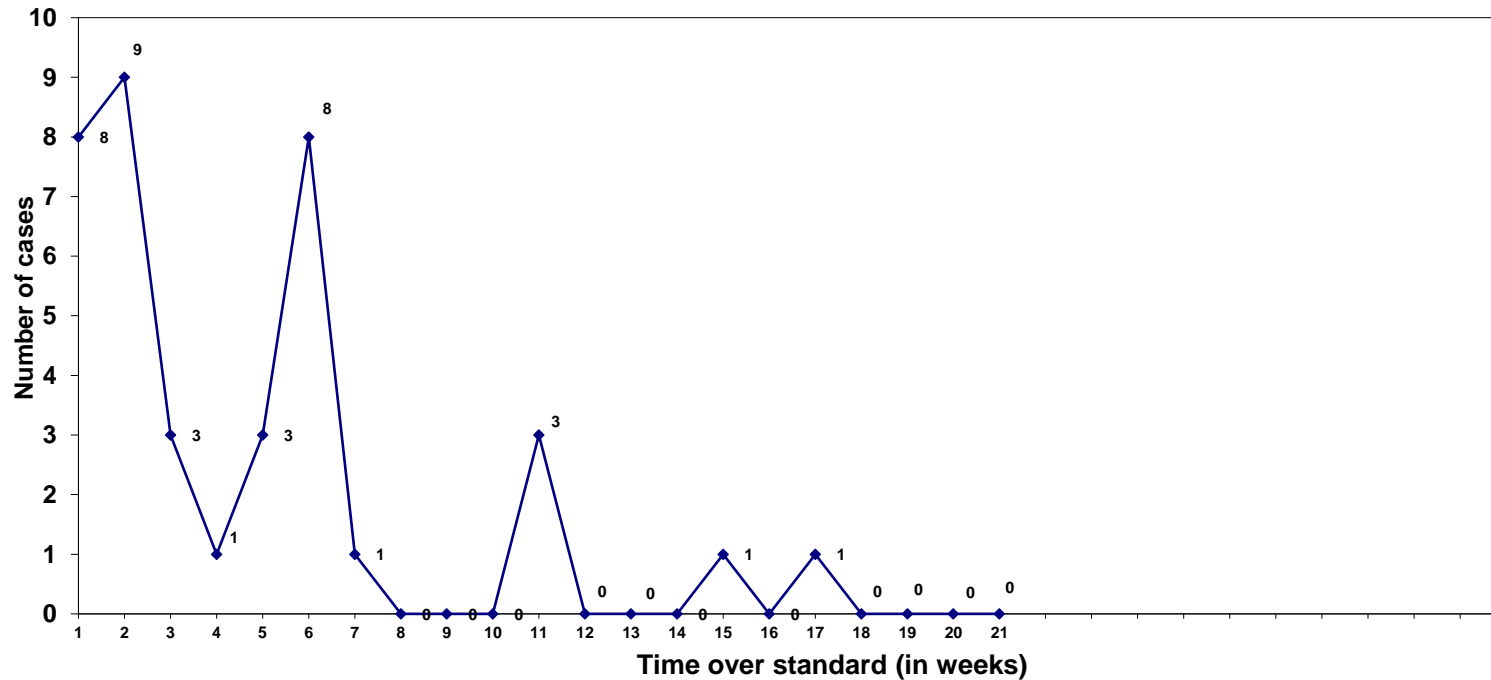
- The average case processing time (weighted)
 Overall: 43 days (Fiscal Year 2015: 42 days)
 Within-standard cases: 37 days (Fiscal Year 2015: 38 days)
 Over-standard cases: 153 days (Fiscal Year 2015: 150 days)
- 16% of the over-standard cases closed within 1 week over standard.
- 47% of the over-standard cases closed within 1 month over standard.
- 50% of the over-standard cases closed within approximately 1 month over standard.

Figure B-6. Distribution of Over-Standard CINA Shelter Cases (N=404) by the Time beyond the 30-Day Time Standard, Fiscal Year 2015



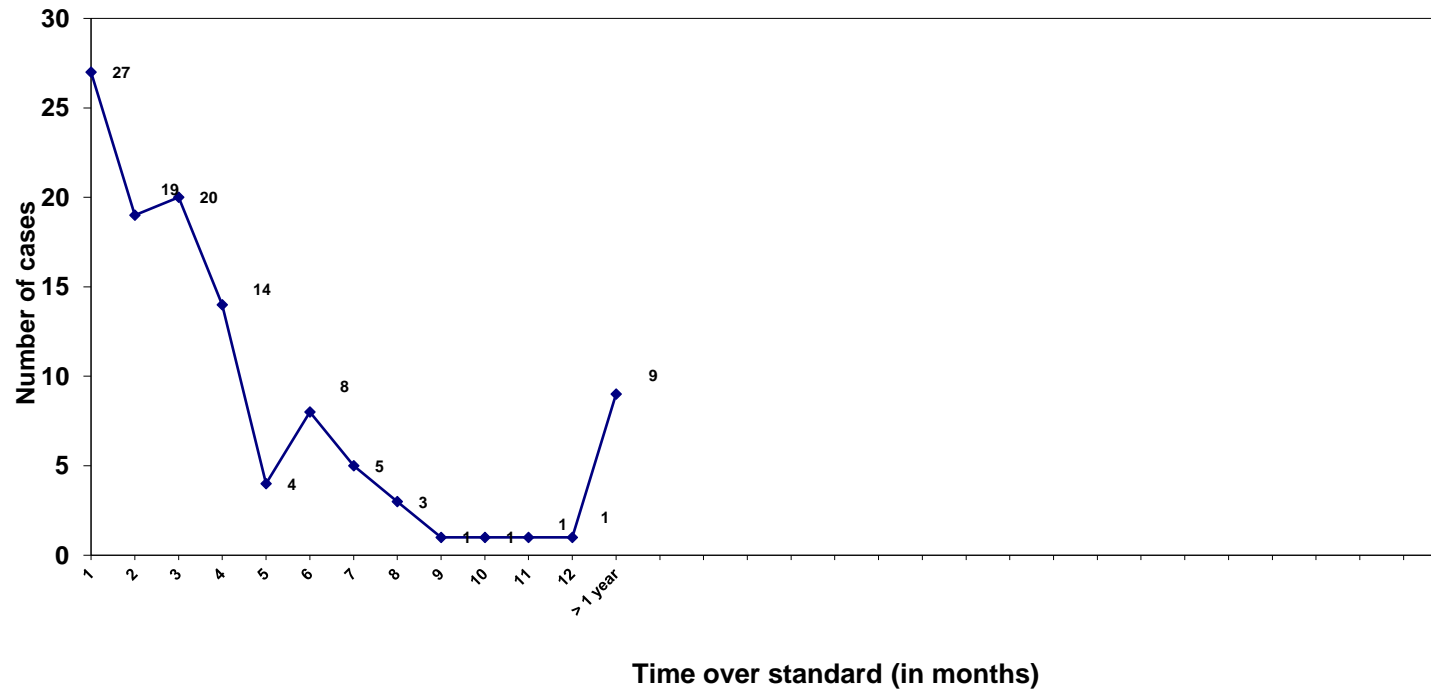
- The average case processing time (weighted)
Overall: 37 days (Fiscal Year 2015: 34 days)
Within-standard cases: 23 days (Fiscal Year 2015: 23 days)
Over-standard cases: 71 days (Fiscal Year 2015: 58 days)
- 20% of the over-standard cases closed within 1 week over standard.
- 60% of the over-standard cases closed within 1 month over standard.
- 50% of the over-standard cases closed within approximately 3.1 weeks over standard.

Figure B-7. Distribution of Over-Standard CINA Non-Shelter Cases (N=40) by the Time beyond the 60-Day Time Standard, Fiscal Year 2016



- The average case processing time (weighted)
Overall: 57 days (Fiscal Year 2015: 41 days)
Within-standard cases: 33 days (Fiscal Year 2015: 33 days)
Over-standard cases: 113 days (Fiscal Year 2015: 102 days)
- 20% of the over-standard cases closed within 1 week over standard.
- 53% of the over-standard cases closed within 1 month over standard.
- 50% of the over-standard cases closed within approximately 3.1 weeks over standard.

Figure B-8. Distribution of Over-Standard Termination of Parental Rights Cases (N=113) by the Time beyond the 180-Day Time Standard, Fiscal Year 2016



- The average case processing time (weighted)
 Overall: 191 days (Fiscal Year 2015: 179 days)
 Within-standard cases: 135 days (Fiscal Year 2015: 130 days)
 Over-standard cases: 313 days (Fiscal Year 2015: 274 days)
- 5% of the over-standard cases closed within 1 week over standard.
- 24% of the over-standard cases closed within 1 month over standard.
- 50% of the over-standard cases closed within approximately 2.7 months over standard.

Appendix C:

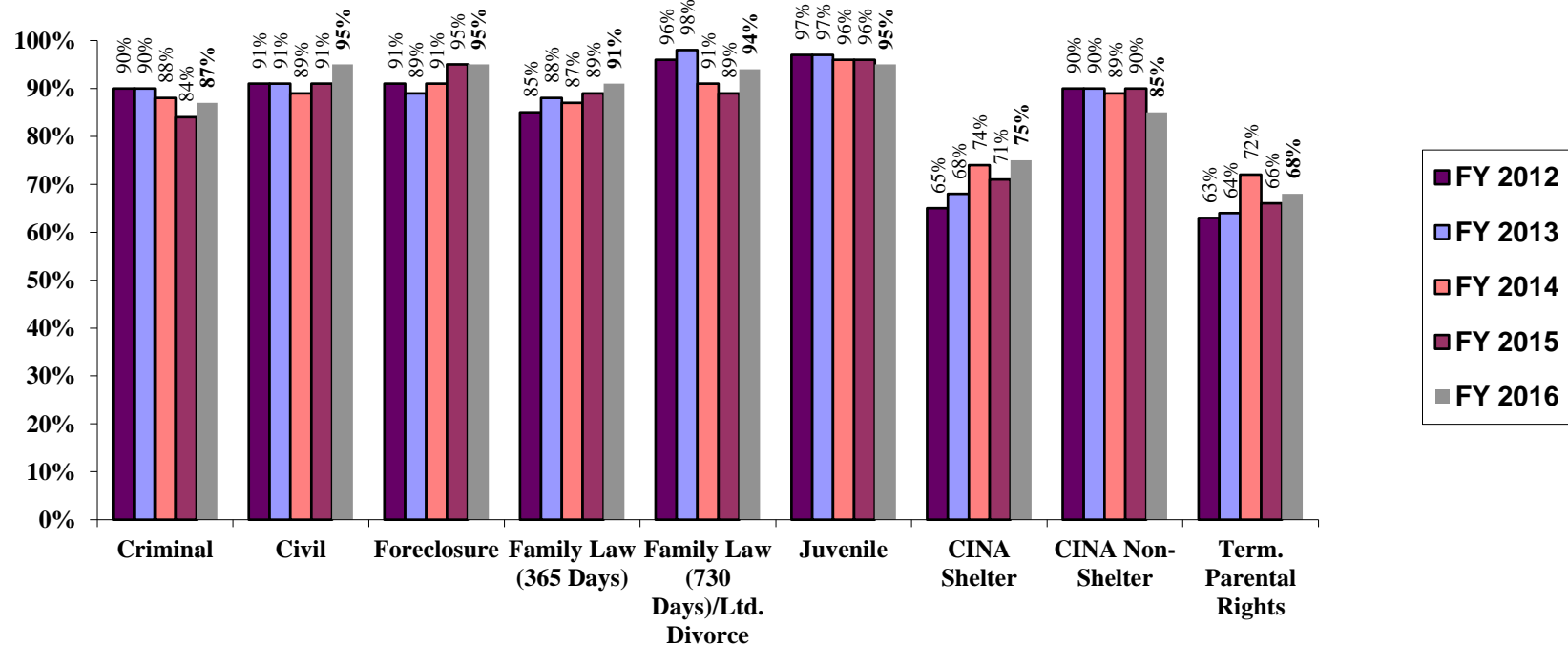
Circuit Courts

Percent of Cases Terminated Within-Standard, by Jurisdiction

Fiscal Years 2012 through 2016*

*“NA” in the following tables denotes jurisdictions for which no cases of a certain type were terminated in a given fiscal year.

Percent of Cases Terminated Within-Standard by Case Type, Fiscal Years 2012-2016*
Statewide (Weighted)

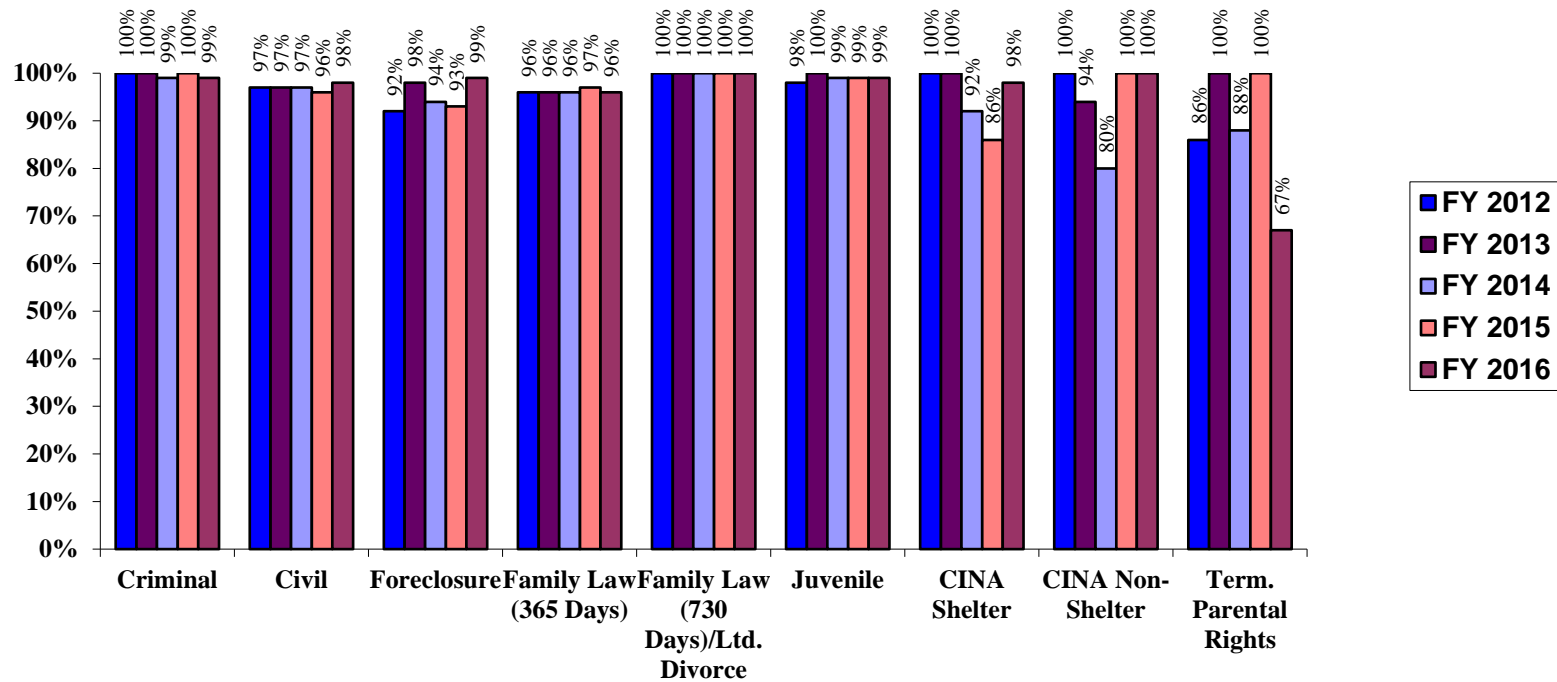


	Criminal	Civil	Foreclosure**	Family Law (365 Days)	FL (730 Days) / Ltd. Divorce***	Juvenile	CINA Shelter	CINA Non-Shelter	Term. Parental Rights
FY 2012	90%	91%	73%	85%	96%	97%	65%	90%	63%
FY 2013	90%	91%	91%	88%	98%	97%	68%	90%	64%
FY 2014	88%	89%	89%	87%	91%	96%	74%	89%	72%
FY 2015	84%	91%	88%	89%	89%	96%	71%	90%	66%
FY 2016	87%	95%	95%	91%	94%	95%	75%	85%	68%
FY 12 -16 Change	-3%	4%	22%	6%	-2%	-2%	10%	-5%	5%

* Jurisdiction-specific data is presented, unweighted, for Fiscal Years 2012 through 2016 on all subsequent pages within Appendix C except for the nine jurisdictions of the upper and lower eastern shore that were excused from data quality review for the Fiscal Year 2016 analysis. **The 730-Day time standard goal became applicable to Foreclosure cases only beginning with the Fiscal Year 2016 Assessment. ***The 730-Day time standard goal became applicable to Limited Divorce cases only beginning with the Fiscal Year 2014 Assessment.

Percent of Cases Terminated Within Standard by Case Type, Fiscal Years 2012-2016

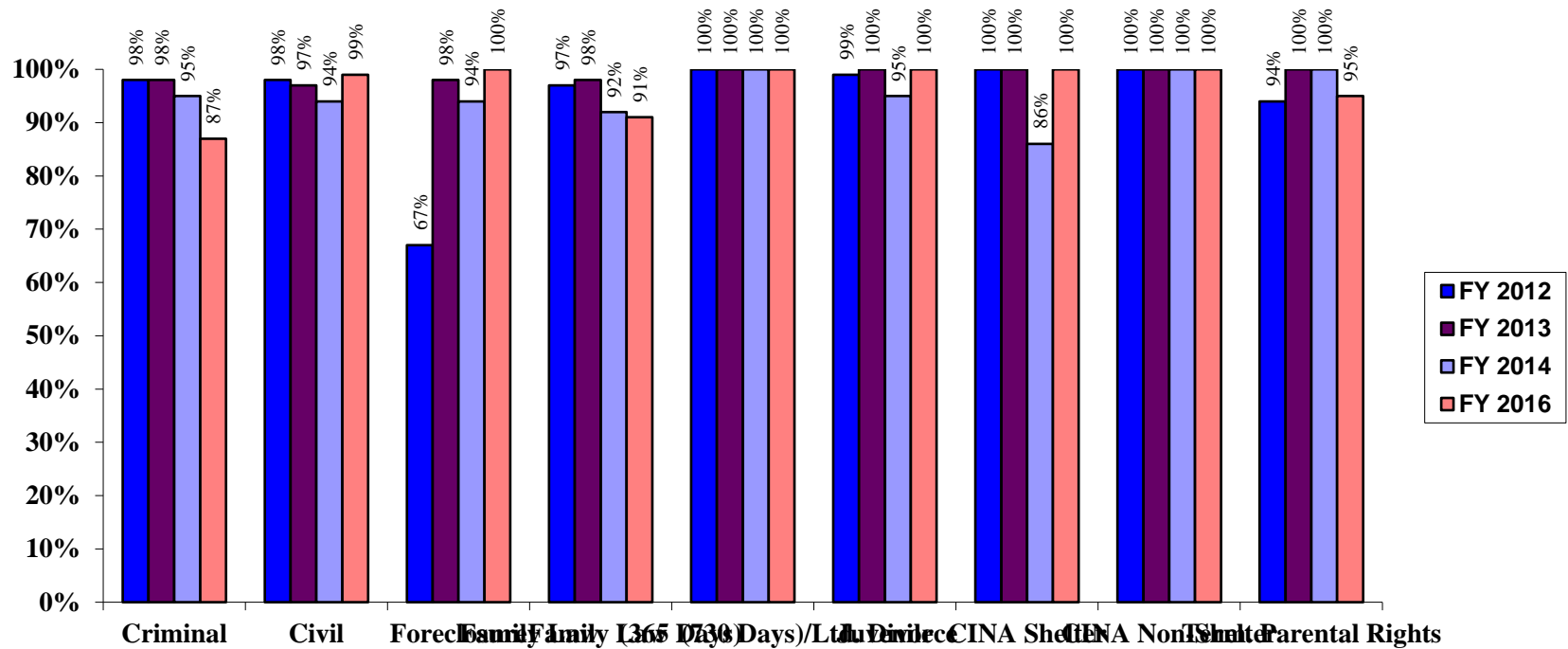
Allegany County (Unweighted)



	Criminal	Civil	Foreclosure*	Family Law (365 Days)	FL (730 Days) / Ltd. Divorce**	Juvenile	CINA Shelter	CINA Non-Shelter	Term. Parental Rights
FY 2012	100%	97%	92%	96%	100%	98%	100%	100%	86%
FY 2013	100%	97%	98%	96%	100%	100%	100%	94%	100%
FY 2014	99%	97%	94%	96%	100%	99%	92%	80%	88%
FY 2015	100%	96%	93%	97%	100%	99%	86%	100%	100%
FY 2016	99%	98%	99%	96%	100%	99%	98%	100%	67%
FY 12 -16 Change	-1%	1%	7%	0%	0%	1%	-2%	0%	-19%

*The 730-Day time standard goal became applicable to Foreclosure cases only beginning with the Fiscal Year 2016 Assessment. **The 730-Day time standard goal became applicable to Limited Divorce cases only beginning with the Fiscal Year 2014 Assessment.

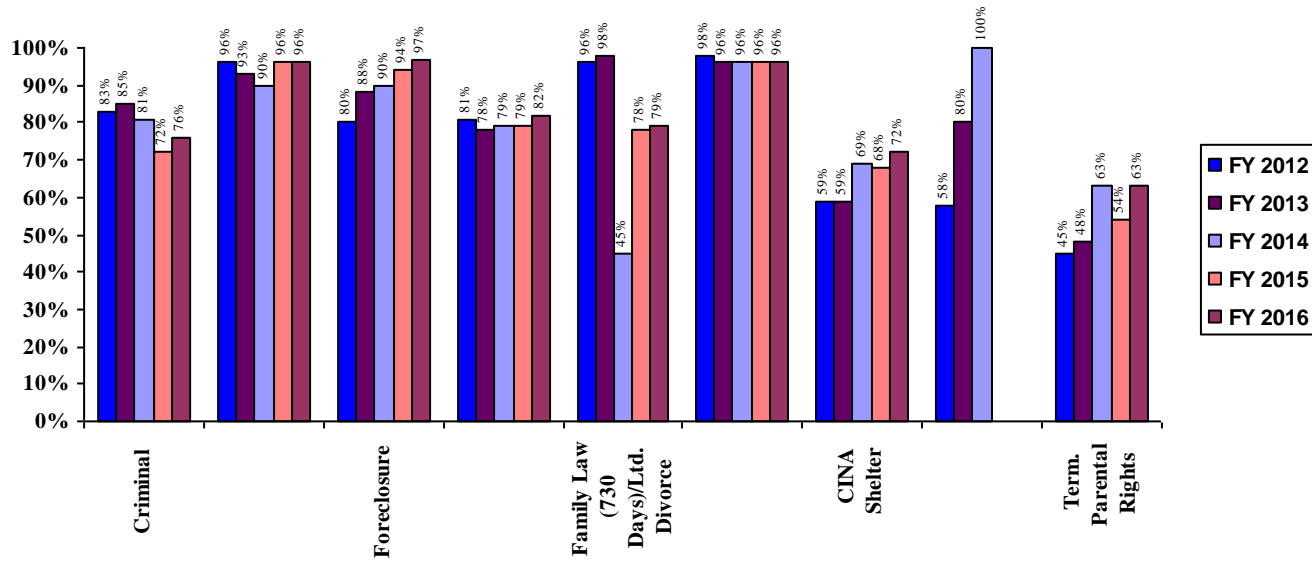
Percent of Cases Terminated Within Standard by Case Type, Fiscal Years 2012-2016
Anne Arundel County (Unweighted)



	Criminal	Civil	Foreclosure*	Family Law (365 Days)	FL (730 Days)/ Ltd. Divorce**	Juvenile	CINA Shelter	CINA Non-Shelter	Term. Parental Rights
FY 2012	98%	98%	67%	97%	100%	99%	100%	100%	94%
FY 2013	98%	97%	98%	98%	100%	100%	100%	100%	100%
FY 2014	95%	94%	94%	92%	100%	95%	86%	100%	100%
FY 2015	‡	‡	‡	‡	‡	‡	‡	‡	‡
FY 2016	87%	99%	100%	91%	100%	100%	100%	100%	95%
FY 12 – 16 Change	-11%	1%	33%	-6%	0%	1%	0%	0%	1%

‡The Circuit Court for Anne Arundel County was excluded from the Fiscal Year 2015 analysis of case processing performance. *The 730-Day time standard goal became applicable to Foreclosure cases only beginning with the Fiscal Year 2016 Assessment. **The 730-Day time standard goal became applicable to Limited Divorce cases only beginning with the Fiscal Year 2014 Assessment.

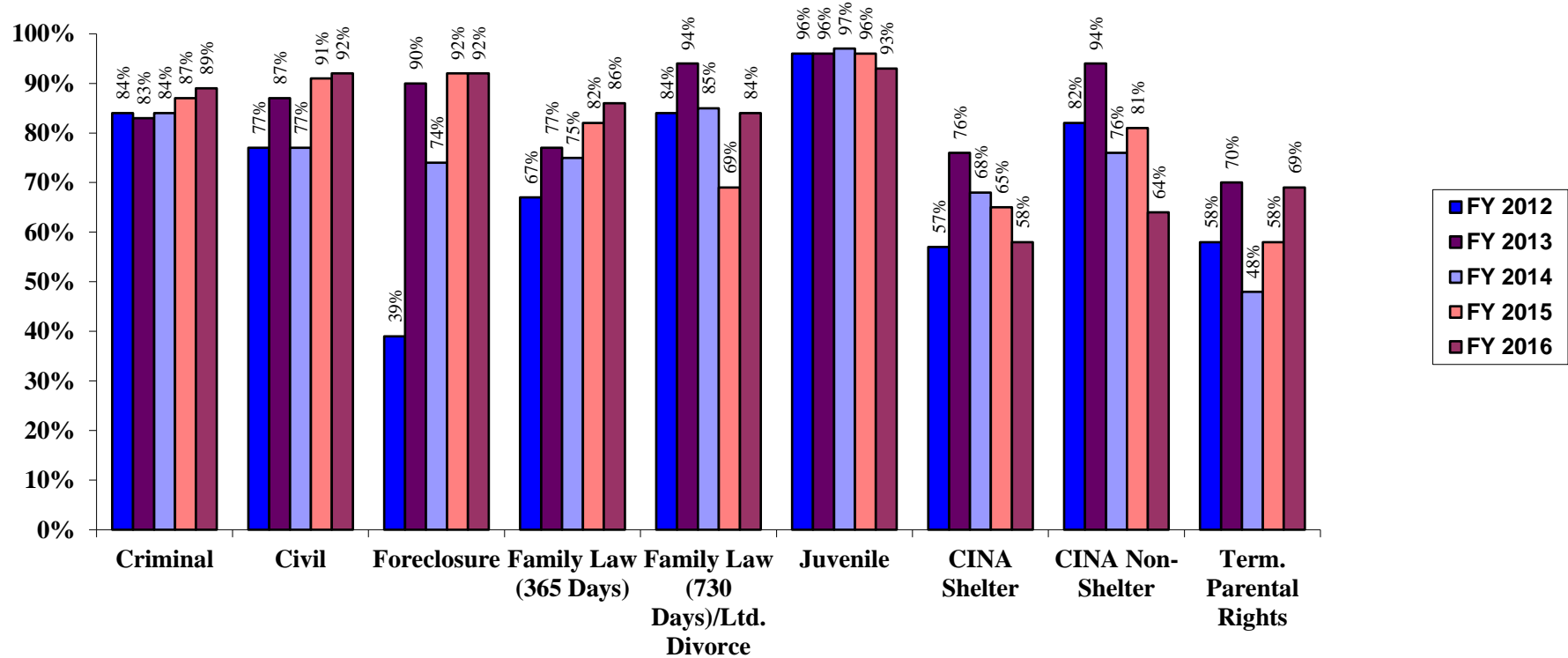
Percent of Cases Terminated Within Standard by Case Type, Fiscal Years 2012-2016
Baltimore City (Unweighted)



	Criminal	Civil	Foreclosure*	Family Law (365 Days)	FL (730 Days) / Ltd. Divorce**	Juvenile	CINA Shelter	CINA Non-Shelter	Term. Parental Rights
FY 2012	83%	96%	80%	81%	96%	98%	59%	58%	45%
FY 2013	85%	93%	88%	78%	98%	96%	59%	80%	48%
FY 2014	81%	90%	90%	79%	45%	96%	69%	100%	63%
FY 2015	72%	96%	94%	79%	78%	96%	68%	N/A	54%
FY 2016	76%	96%	97%	82%	79%	96%	72%	N/A	63%
FY 12 -16 Change	-7%	0%	17%	1%	-17%	-2%	13%	N/A	18%

*The 730-Day time standard goal became applicable to Foreclosure cases only beginning with the Fiscal Year 2016 Assessment.**The 730-Day time standard goal became applicable to Limited Divorce cases only beginning with the Fiscal Year 2014 Assessment.

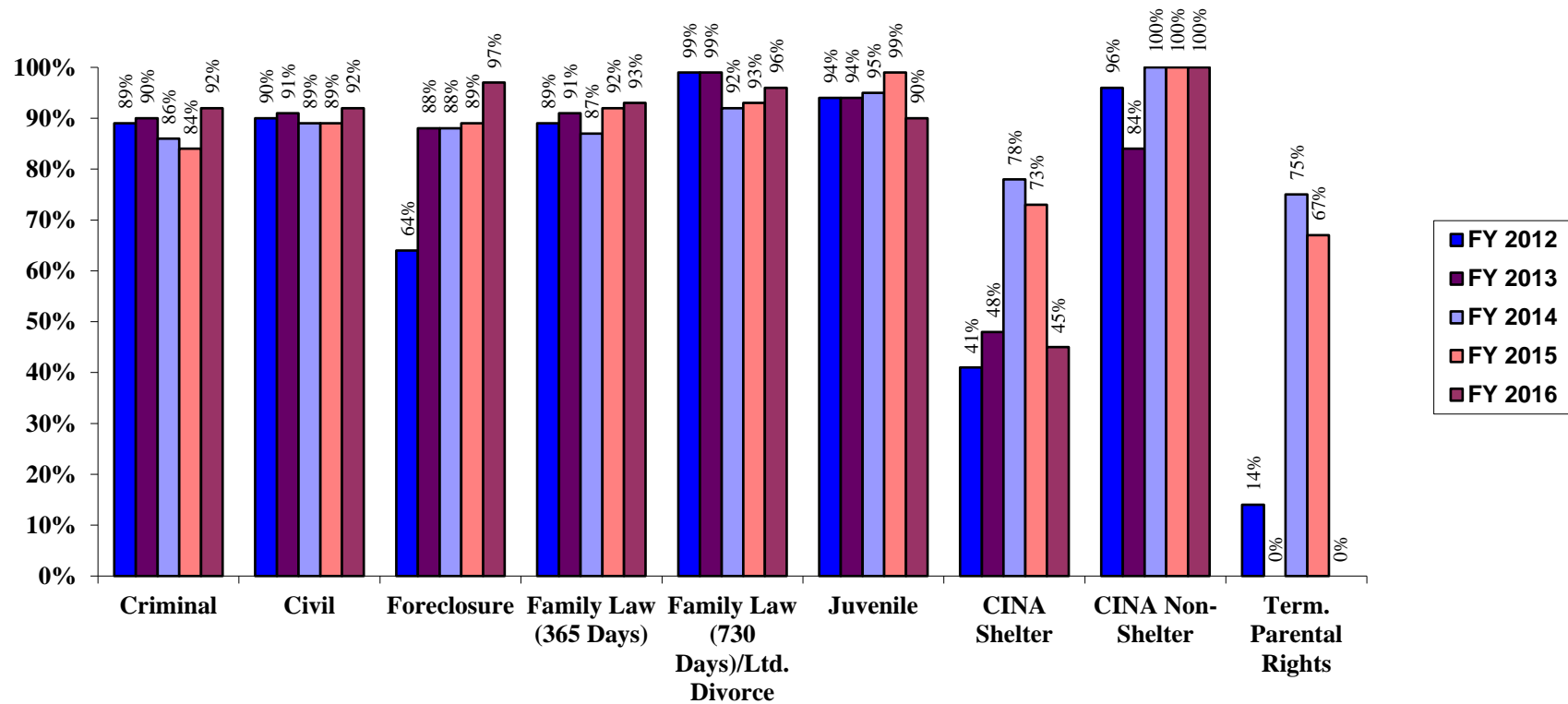
Percent of Cases Terminated Within Standard by Case Type, Fiscal Years 2012-2016
Baltimore County (Unweighted)



	Criminal	Civil	Foreclosure*	Family Law (365 Days)	FL (730 Days) / Ltd. Divorce**	Juvenile	CINA Shelter	CINA Non-Shelter	Term. Parental Rights
FY 2012	84%	77%	39%	67%	84%	96%	57%	82%	58%
FY 2013	83%	87%	90%	77%	94%	96%	76%	94%	70%
FY 2014	84%	77%	74%	75%	85%	97%	68%	76%	48%
FY 2015	87%	91%	92%	82%	69%	96%	65%	81%	58%
FY 2016	89%	92%	92%	86%	84%	93%	58%	64%	69%
FY 12 -16 Change	5%	15%	53%	19%	0%	-3%	1%	-18%	11%

*The 730-Day time standard goal became applicable to Foreclosure cases only beginning with the Fiscal Year 2016 Assessment.**The 730-Day time standard goal became applicable to Limited Divorce cases only beginning with the Fiscal Year 2014 Assessment.

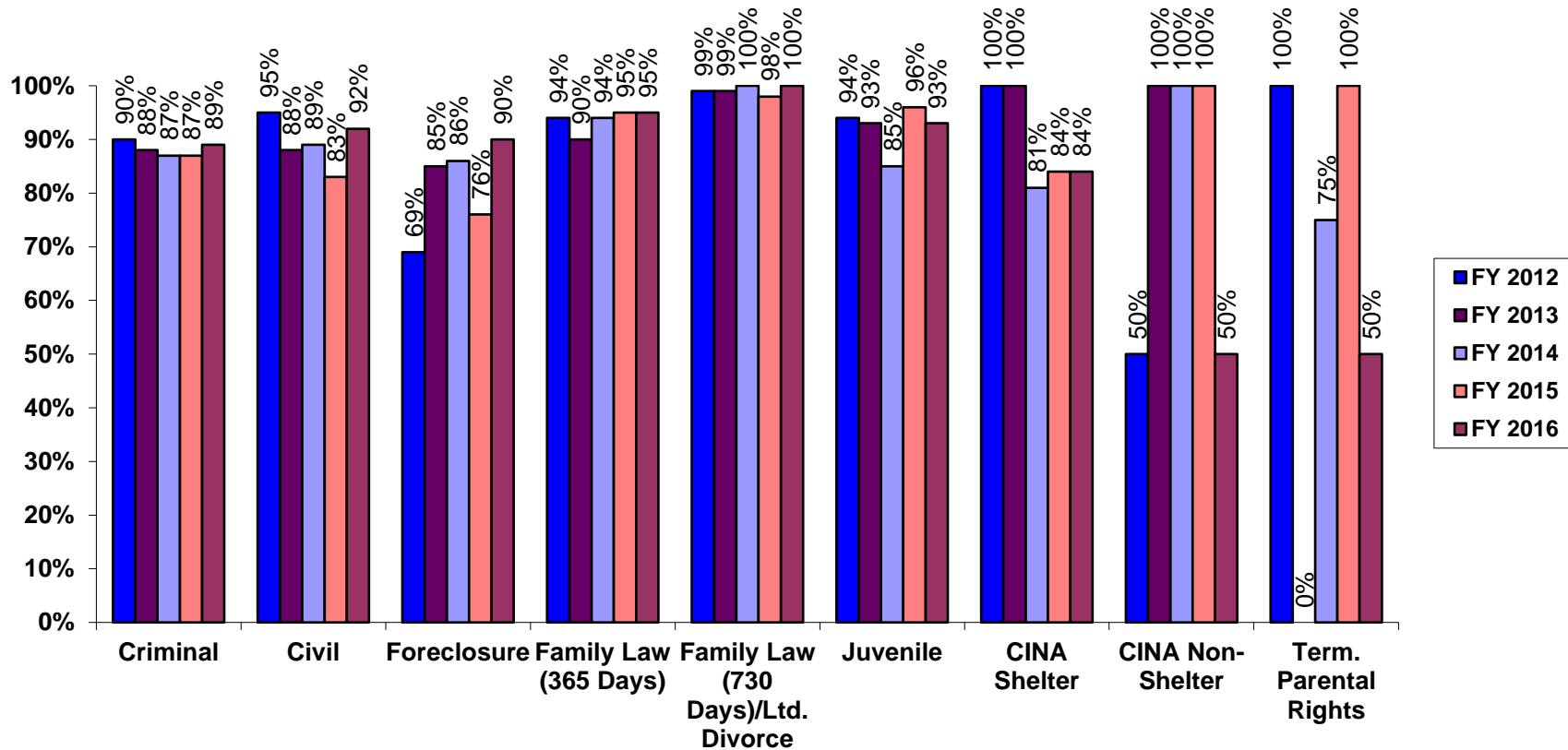
Percent of Cases Terminated Within Standard by Case Type, Fiscal Years 2012-2016
Calvert County (Unweighted)



	Criminal	Civil	Foreclosure*	Family Law (365 Days)	FL (730 Days) / Ltd. Divorce**	Juvenile	CINA Shelter	CINA Non-Shelter	Term. Parental Rights
FY 2012	89%	90%	64%	89%	99%	94%	41%	96%	14%
FY 2013	90%	91%	88%	91%	99%	94%	48%	84%	0%
FY 2014	86%	89%	88%	87%	92%	95%	78%	100%	75%
FY 2015	84%	89%	89%	92%	93%	99%	73%	100%	67%
FY 2016	92%	92%	97%	93%	96%	90%	45%	100%	0%
FY 12 -16 Change	3%	2%	33%	4%	-3%	-4%	4%	4%	-100%

*The 730-Day time standard goal became applicable to Foreclosure cases only beginning with the Fiscal Year 2016 Assessment.**The 730-Day time standard goal became applicable to Limited Divorce cases only beginning with the Fiscal Year 2014 Assessment.

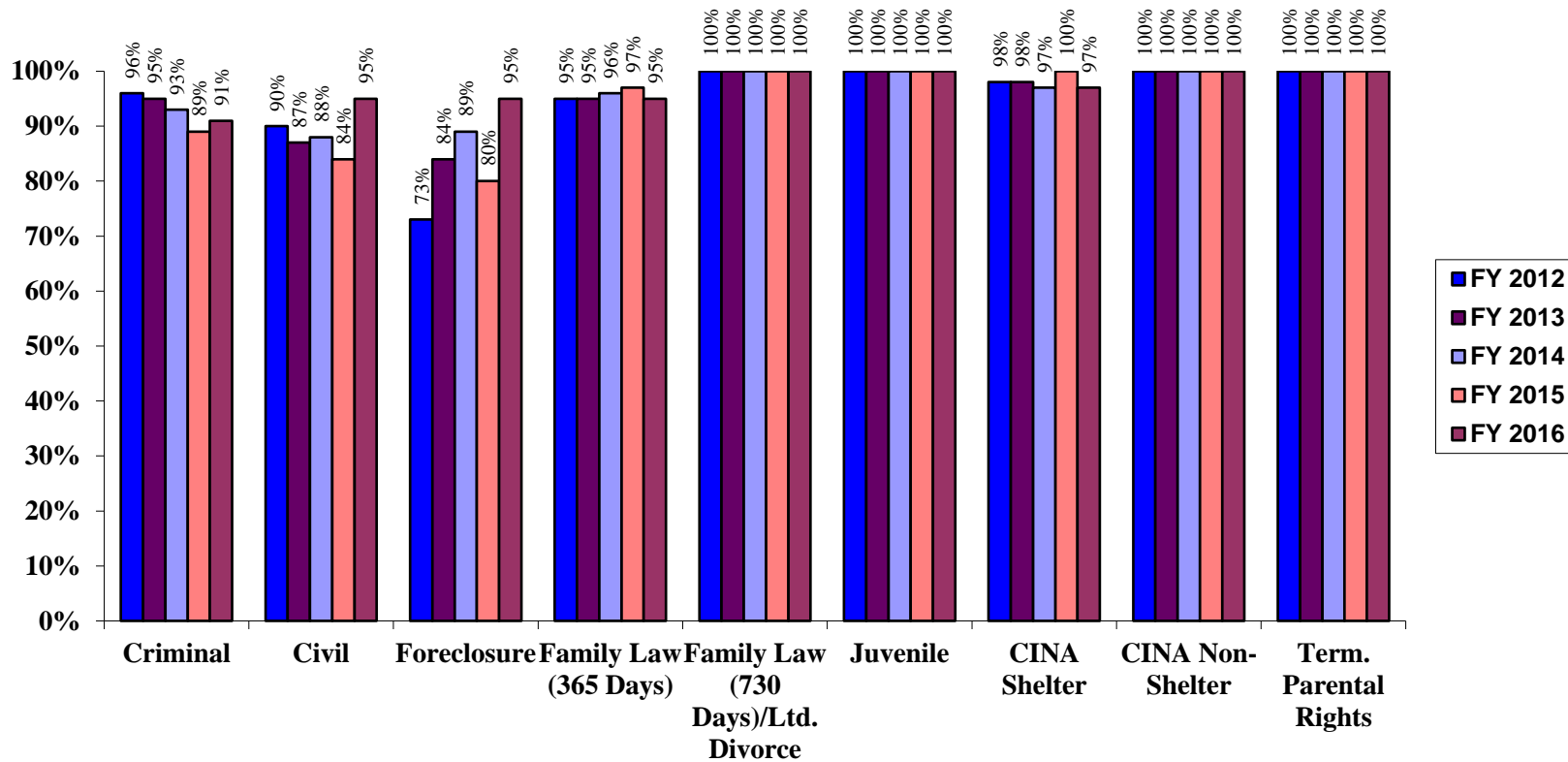
Percent of Cases Terminated Within Standard by Case Type, Fiscal Years 2012-2016
Carroll County (Unweighted)



	Criminal	Civil	Foreclosure*	Family Law (365 Days)	FL (730 Days) / Ltd. Divorce**	Juvenile	CINA Shelter	CINA Non-Shelter	Term. Parental Rights
FY 2012	90%	95%	69%	94%	99%	94%	100%	50%	100%
FY 2013	88%	88%	85%	90%	99%	93%	100%	100%	0%
FY 2014	87%	89%	86%	94%	100%	85%	81%	100%	75%
FY 2015	87%	83%	76%	95%	98%	96%	84%	100%	100%
FY 2016	89%	92%	90%	95%	100%	93%	84%	50%	50%
FY 12 -16 Change	-1%	-3%	21%	1%	1%	-1%	-16%	0%	-50%

*The 730-Day time standard goal became applicable to Foreclosure cases only beginning with the Fiscal Year 2016 Assessment. **The 730-Day time standard goal became applicable to Limited Divorce cases only beginning with the Fiscal Year 2014 Assessment.

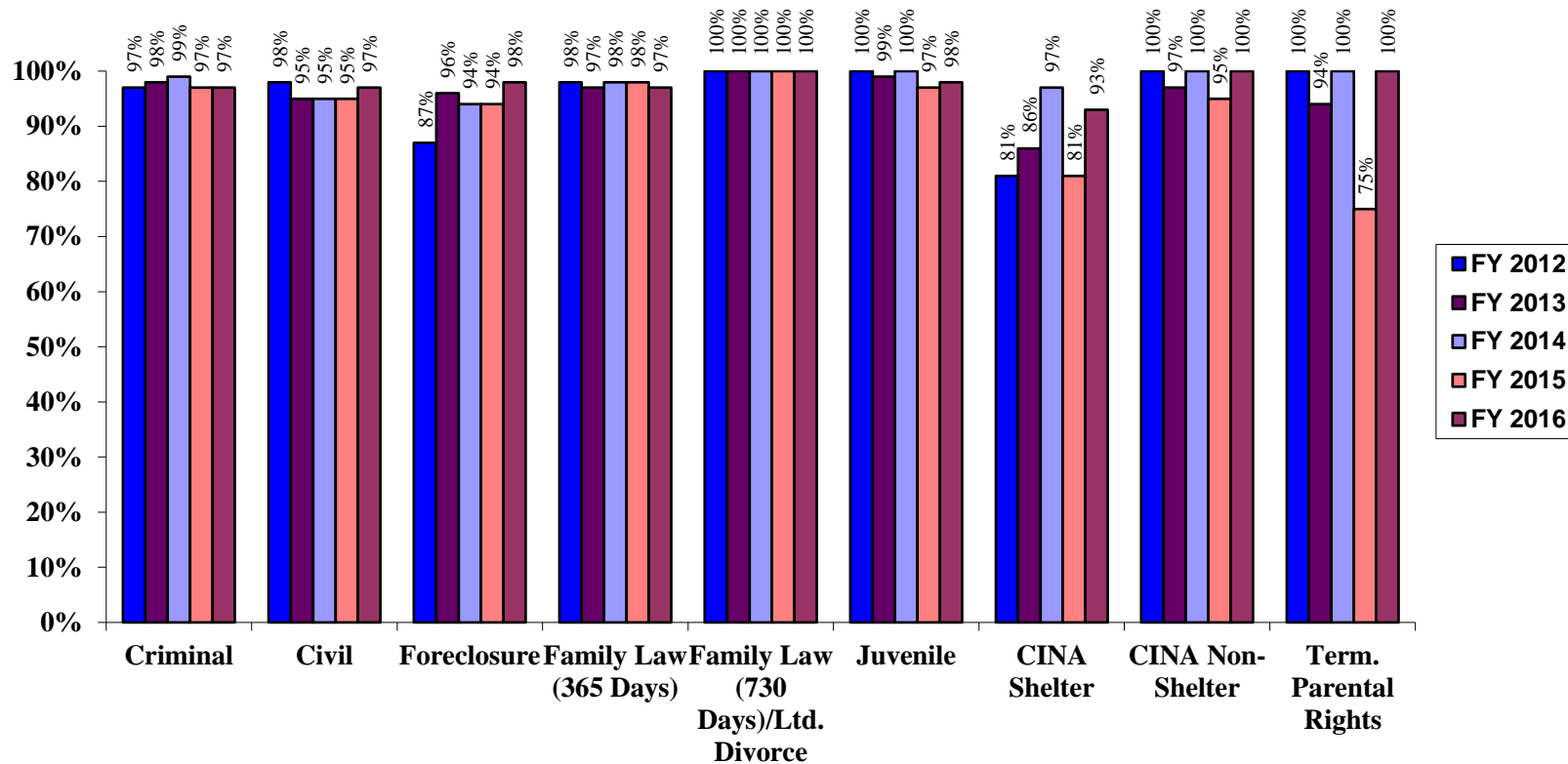
Percent of Cases Terminated Within Standard by Case Type, Fiscal Years 2012-2016
Charles County (Unweighted)



	Criminal	Civil	Foreclosure*	Family Law (365 Days)	FL (730 Days) / Ltd. Divorce**	Juvenile	CINA Shelter	CINA Non-Shelter	Term. Parental Rights
FY 2012	96%	90%	73%	95%	100%	100%	98%	100%	100%
FY 2013	95%	87%	84%	95%	100%	100%	98%	100%	100%
FY 2014	93%	88%	89%	96%	100%	100%	97%	100%	100%
FY 2015	89%	84%	80%	97%	100%	100%	100%	100%	100%
FY 2016	91%	95%	95%	95%	100%	100%	97%	100%	100%
FY 12 -16 Change	-5%	5%	22%	0%	0%	0%	-1%	0%	0%

*The 730-Day time standard goal became applicable to Foreclosure cases only beginning with the Fiscal Year 2016 Assessment.**The 730-Day time standard goal became applicable to Limited Divorce cases only beginning with the Fiscal Year 2014 Assessment.

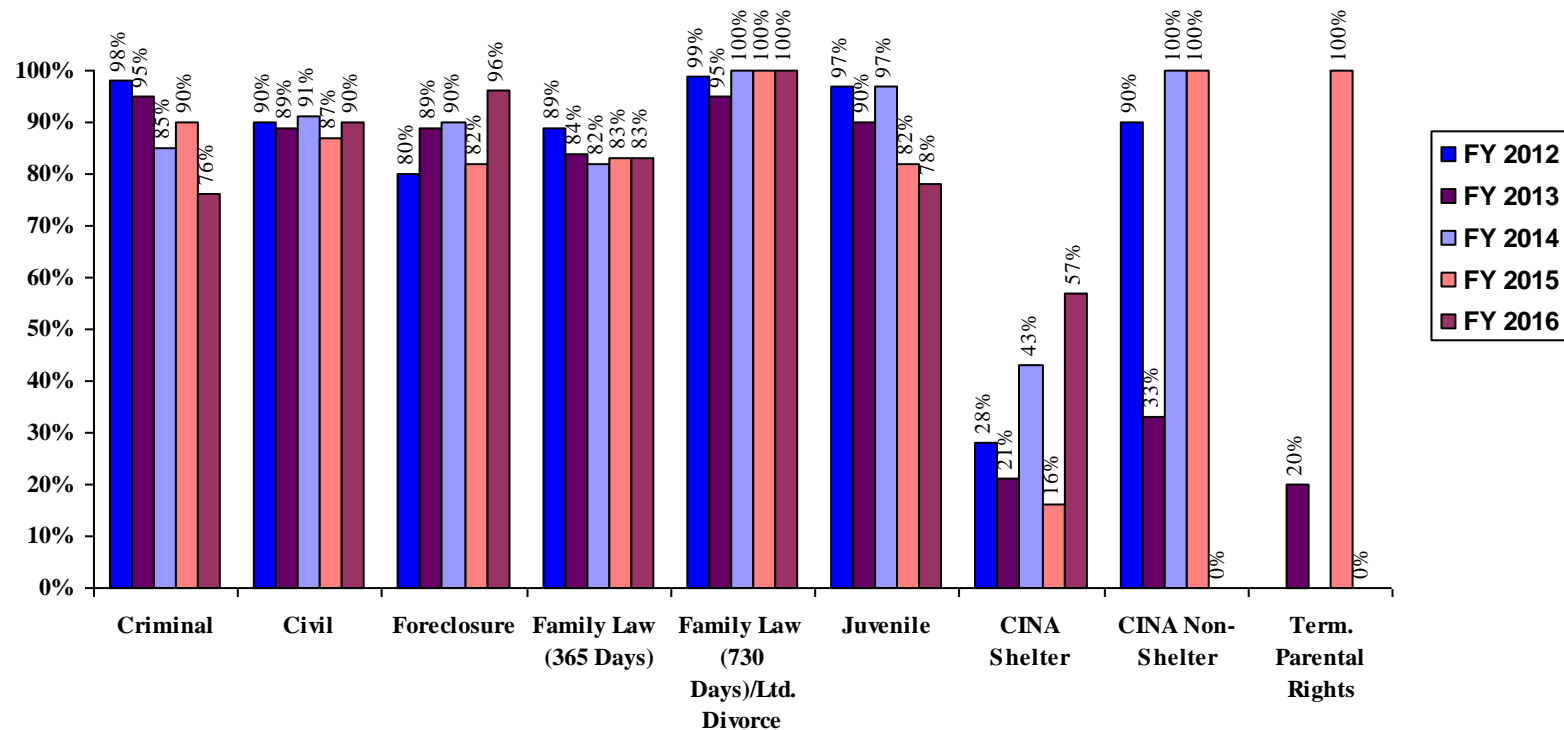
Percent of Cases Terminated Within Standard by Case Type, Fiscal Years 2012-2016
Frederick County (Unweighted)



	Criminal	Civil	Foreclosure*	Family Law (365 Days)	FL (730 Days) / Ltd. Divorce**	Juvenile	CINA Shelter	CINA Non-Shelter	Term. Parental Rights
FY 2012	97%	98%	87%	98%	100%	100%	81%	100%	100%
FY 2013	98%	95%	96%	97%	100%	99%	86%	97%	94%
FY 2014	99%	95%	94%	98%	100%	100%	97%	100%	100%
FY 2015	97%	95%	94%	98%	100%	97%	81%	95%	75%
FY 2016	97%	97%	98%	97%	100%	98%	93%	100%	100%
FY 12 -16 Change	0%	-1%	11%	-1%	0%	-2%	12%	0%	0%

*The 730-Day time standard goal became applicable to Foreclosure cases only beginning with the Fiscal Year 2016 Assessment.**The 730-Day time standard goal became applicable to Limited Divorce cases only beginning with the Fiscal Year 2014 Assessment.

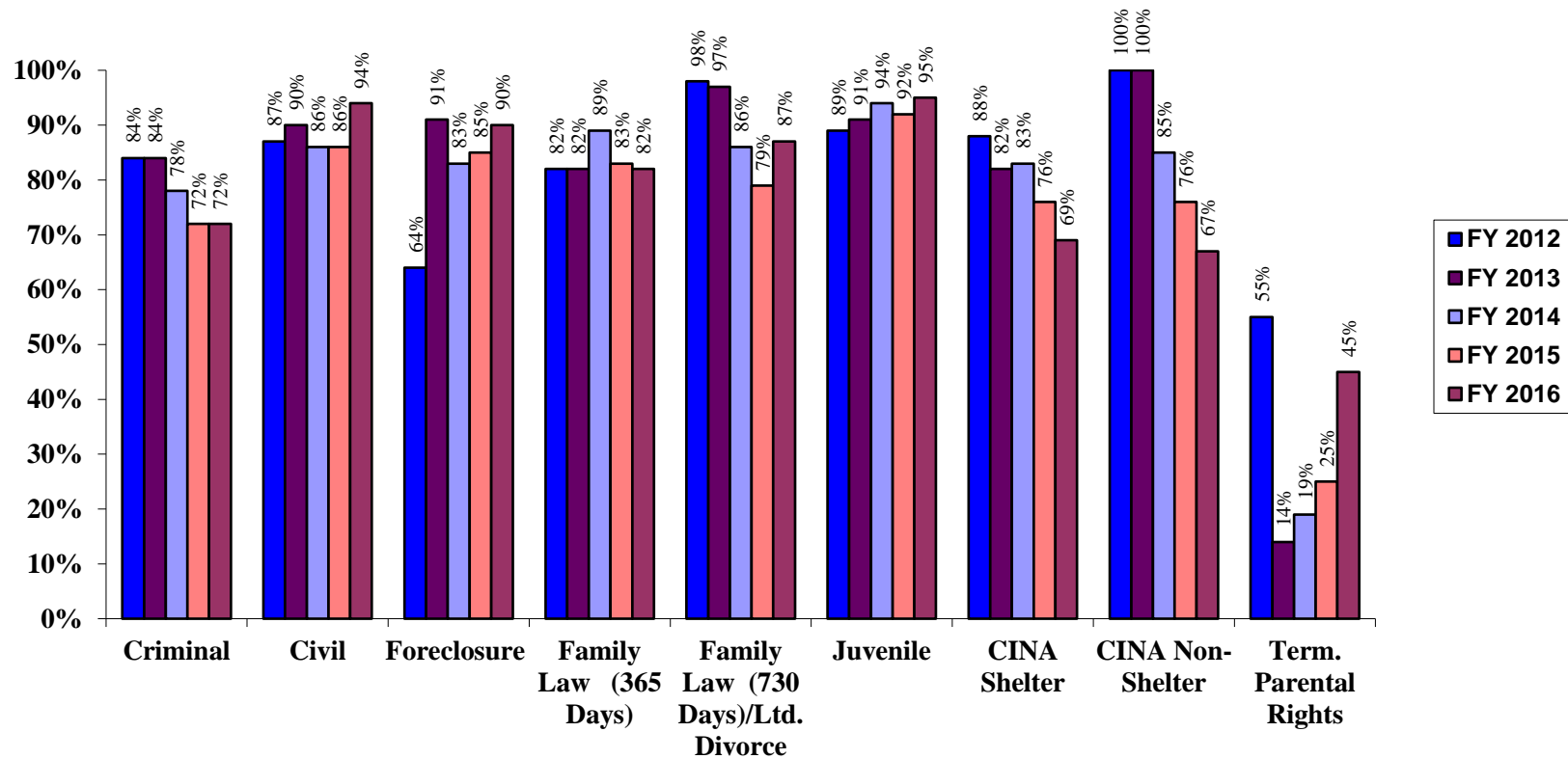
Percent of Cases Terminated Within Standard by Case Type, Fiscal Years 2012-2016
Garrett County (Unweighted)



	Criminal	Civil	Foreclosure*	Family Law (365 Days)	FL (730 Days) / Ltd. Divorce**	Juvenile	CINA Shelter	CINA Non-Shelter	Term. Parental Rights
FY 2012	98%	90%	80%	89%	99%	97%	28%	90%	N/A
FY 2013	95%	89%	89%	84%	95%	90%	21%	33%	20%
FY 2014	85%	91%	90%	82%	100%	97%	43%	100%	N/A
FY 2015	90%	87%	82%	83%	100%	82%	16%	100%	100%
FY 2016	76%	90%	96%	83%	100%	78%	57%	0%	0%
FY 12 -16 Change	-22%	0%	16%	-6%	1%	19%	29%	-100%	N/A

*The 730-Day time standard goal became applicable to Foreclosure cases only beginning with the Fiscal Year 2016 Assessment.**The 730-Day time standard goal became applicable to Limited Divorce cases only beginning with the Fiscal Year 2014 Assessment.

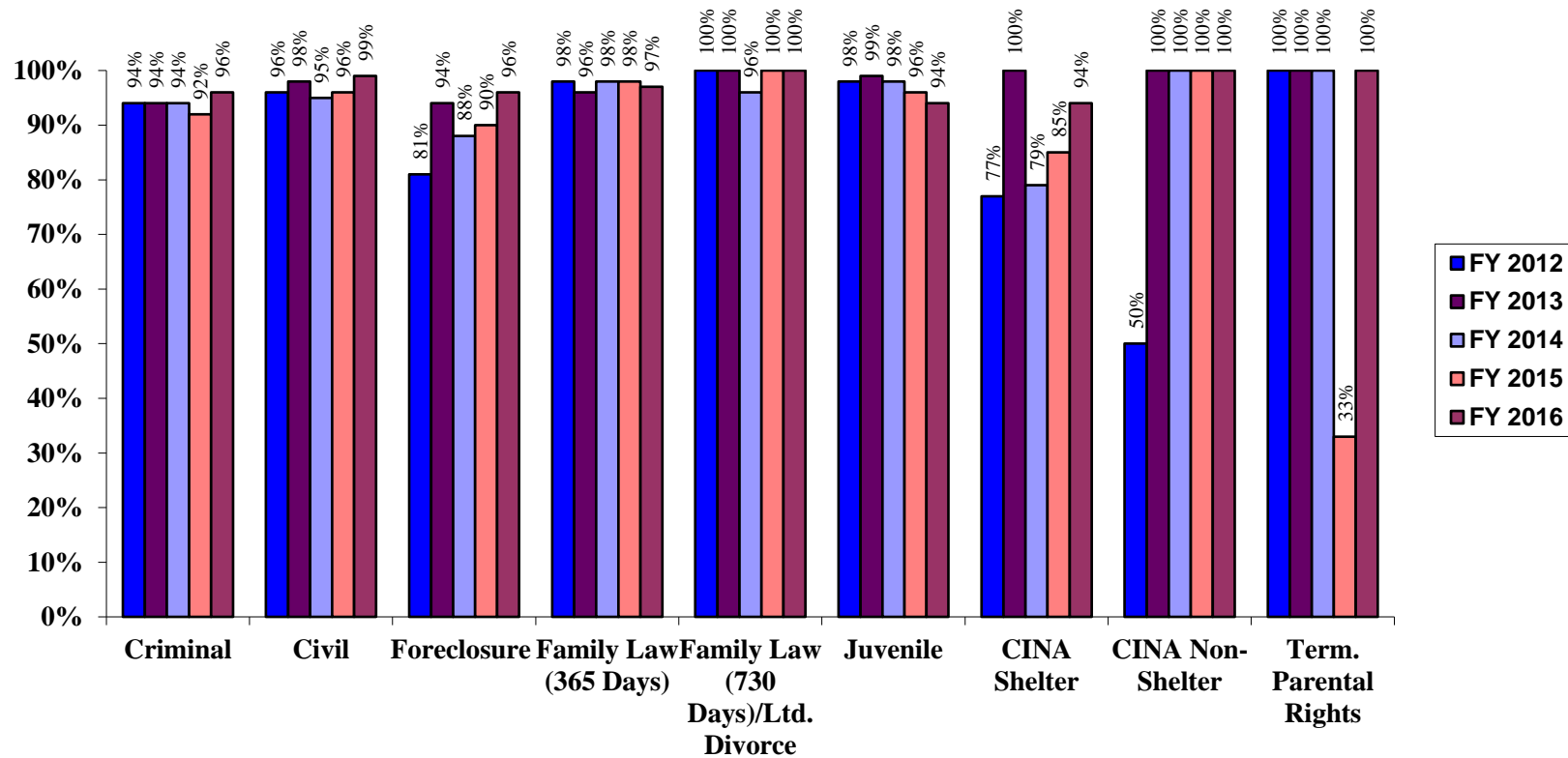
Percent of Cases Terminated Within Standard by Case Type, Fiscal Years 2012-2016
Harford County (Unweighted)



	Criminal	Civil	Foreclosure*	Family Law (365 Days)	FL (730 Days) / Ltd. Divorce**	Juvenile	CINA Shelter	CINA Non-Shelter	Term. Parental Rights
FY 2012	84%	87%	64%	82%	98%	89%	88%	100%	55%
FY 2013	84%	90%	91%	82%	97%	91%	82%	100%	14%
FY 2014	78%	86%	83%	89%	86%	94%	83%	85%	19%
FY 2015	72%	86%	85%	83%	79%	92%	76%	76%	25%
FY 2016	72%	94%	90%	82%	87%	95%	69%	67%	45%
FY 12 -16 Change	-12%	7%	26%	0%	-11%	6%	-19%	-33%	-10%

*The 730-Day time standard goal became applicable to Foreclosure cases only beginning with the Fiscal Year 2016 Assessment.**The 730-Day time standard goal became applicable to Limited Divorce cases only beginning with the Fiscal Year 2014 Assessment.

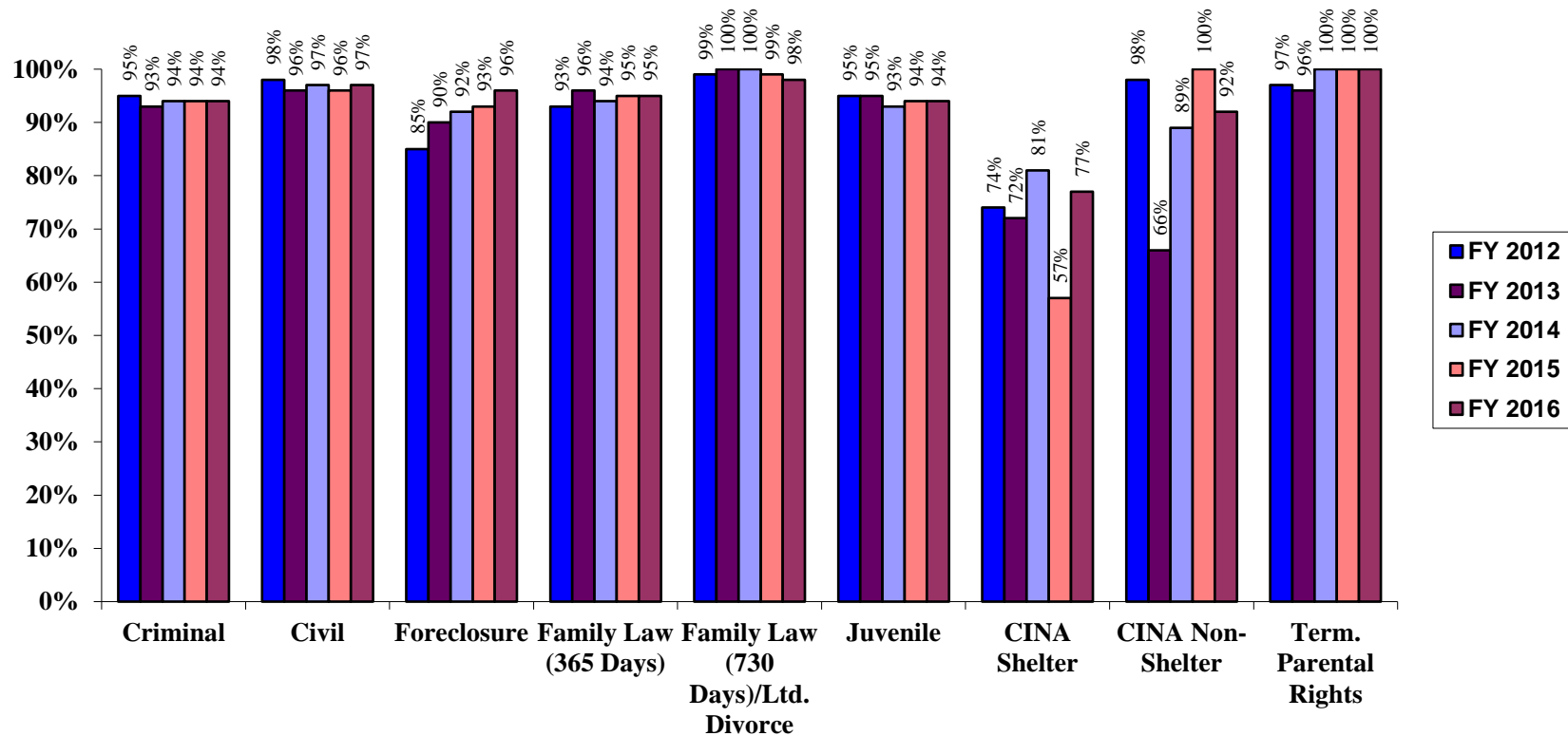
Percent of Cases Terminated Within Standard by Case Type, Fiscal Years 2012-2016
Howard County (Unweighted)



	Criminal	Civil	Foreclosure*	Family Law (365 Days)	FL (730 Days) / Ltd. Divorce**	Juvenile	CINA Shelter	CINA Non-Shelter	Term. Parental Rights
FY 2012	94%	96%	81%	98%	100%	98%	77%	50%	100%
FY 2013	94%	98%	94%	96%	100%	99%	100%	100%	100%
FY 2014	94%	95%	88%	98%	96%	98%	79%	100%	100%
FY 2015	92%	96%	90%	98%	100%	96%	85%	100%	33%
FY 2016	96%	99%	96%	97%	100%	94%	94%	100%	100%
FY 12 -16 Change	2%	3%	15%	-1%	0%	-4%	17%	100%	0%

*The 730-Day time standard goal became applicable to Foreclosure cases only beginning with the Fiscal Year 2016 Assessment.**The 730-Day time standard goal became applicable to Limited Divorce cases only beginning with the Fiscal Year 2014 Assessment.

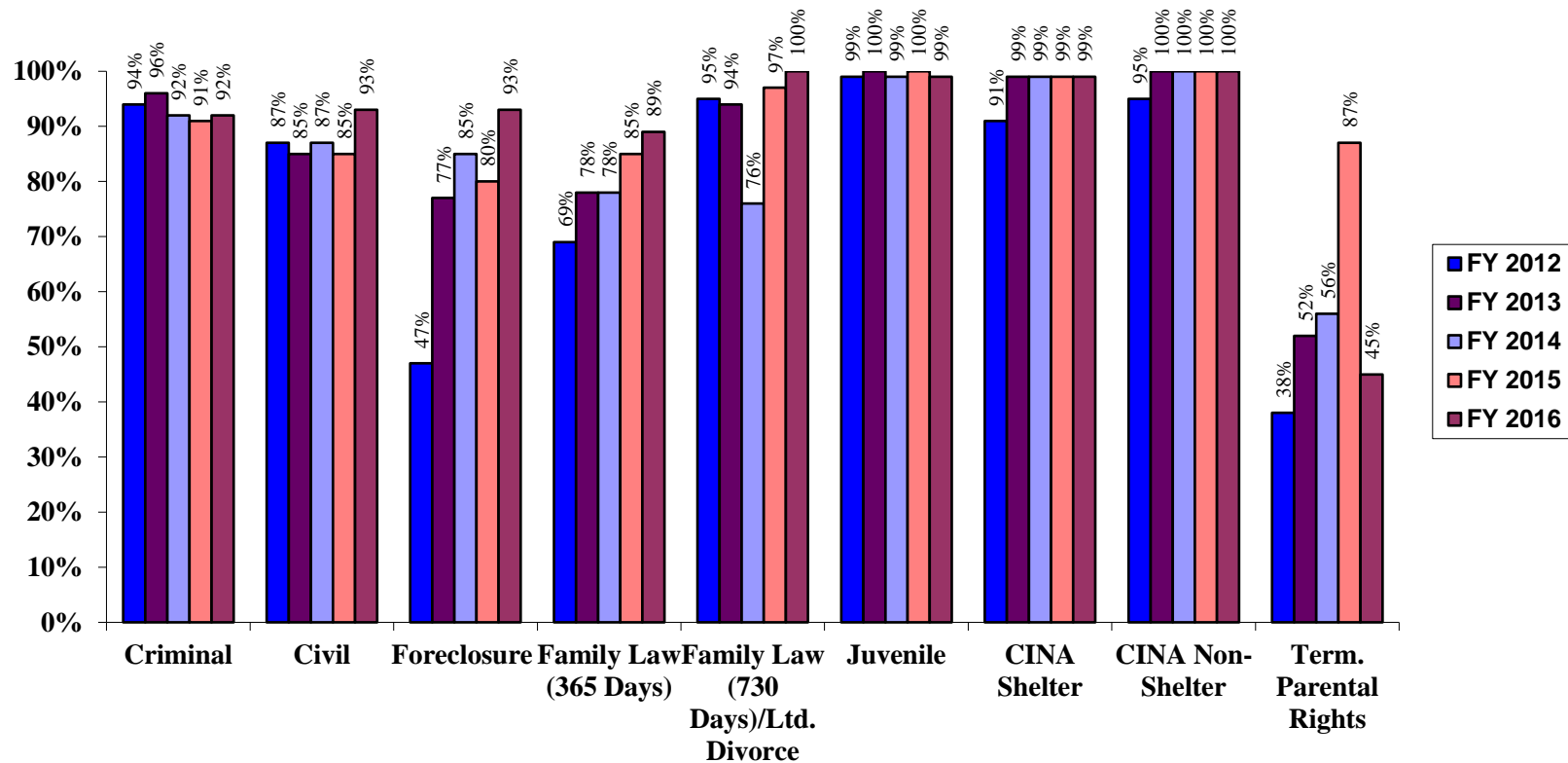
Percent of Cases Terminated Within Standard by Case Type, Fiscal Years 2012-2016
Montgomery County (Unweighted)



	Criminal	Civil	Foreclosure*	Family Law (365 Days)	FL (730 Days) / Ltd. Divorce**	Juvenile	CINA Shelter	CINA Non-Shelter	Term. Parental Rights
FY 2012	95%	98%	85%	93%	99%	95%	74%	98%	97%
FY 2013	93%	96%	90%	96%	100%	95%	72%	66%	96%
FY 2014	94%	97%	92%	94%	100%	93%	81%	89%	100%
FY 2015	94%	96%	93%	95%	99%	94%	57%	100%	100%
FY 2016	94%	97%	96%	95%	98%	94%	77%	92%	100%
FY 12 -16 Change	-1%	-1%	11%	2%	-1%	-1%	3%	-6%	3%

*The 730-Day time standard goal became applicable to Foreclosure cases **only** beginning with the Fiscal Year 2016 Assessment.**The 730-Day time standard goal became applicable to Limited Divorce cases **only** beginning with the Fiscal Year 2014 Assessment.

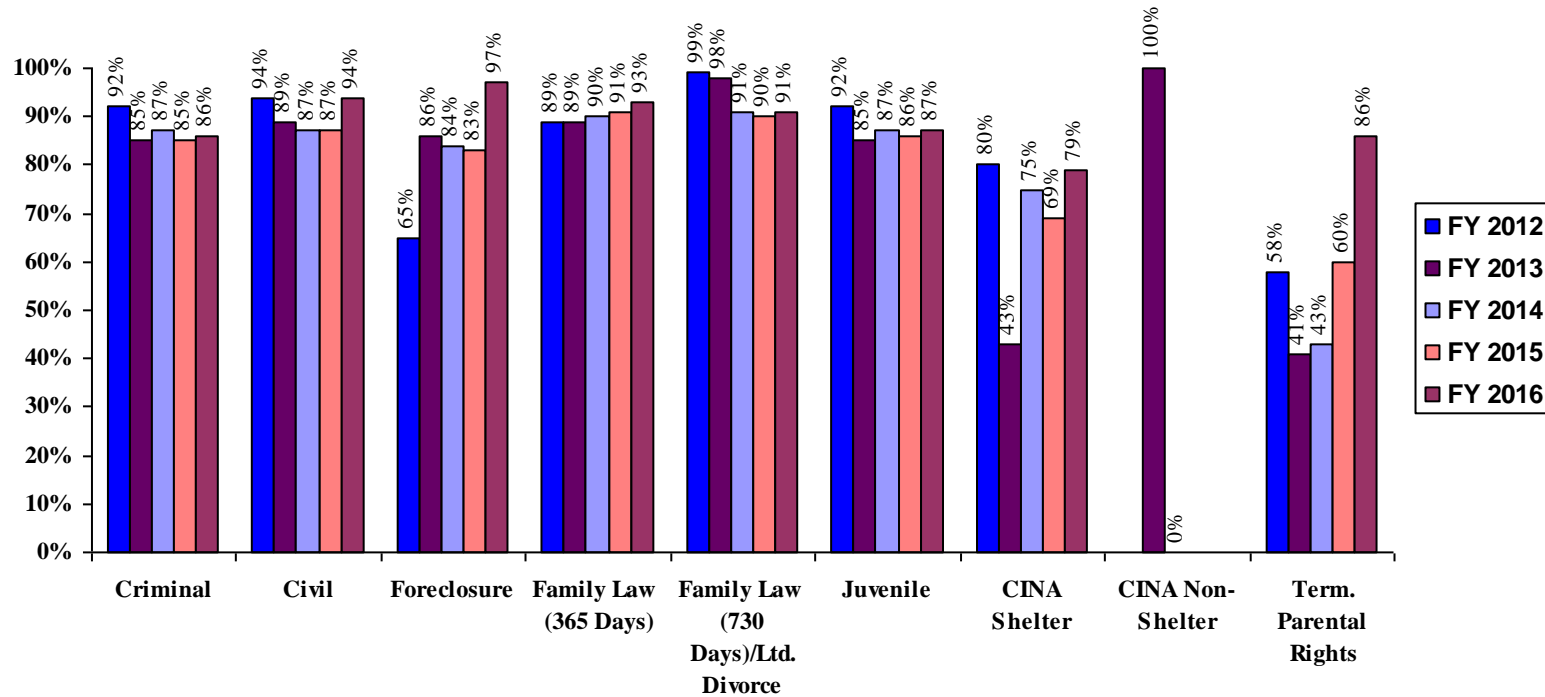
Percent of Cases Terminated Within Standard by Case Type, Fiscal Years 2012-2016
Prince George's County (Unweighted)



	Criminal	Civil	Foreclosure*	Family Law (365 Days)	FL (730 Days) / Ltd. Divorce**	Juvenile	CINA Shelter	CINA Non-Shelter	Term. Parental Rights
FY 2012	94%	87%	47%	69%	95%	99%	91%	95%	38%
FY 2013	96%	85%	77%	78%	94%	100%	99%	100%	52%
FY 2014	92%	87%	85%	78%	76%	99%	99%	100%	56%
FY 2015	91%	85%	80%	85%	97%	100%	99%	100%	87%
FY 2016	92%	93%	93%	89%	100%	99%	99%	100%	45%
FY 12 -16 Change	-2%	6%	46%	20%	5%	0%	8%	5%	7%

*The 730-Day time standard goal became applicable to Foreclosure cases only beginning with the Fiscal Year 2016 Assessment.**The 730-Day time standard goal became applicable to Limited Divorce cases only beginning with the Fiscal Year 2014 Assessment.

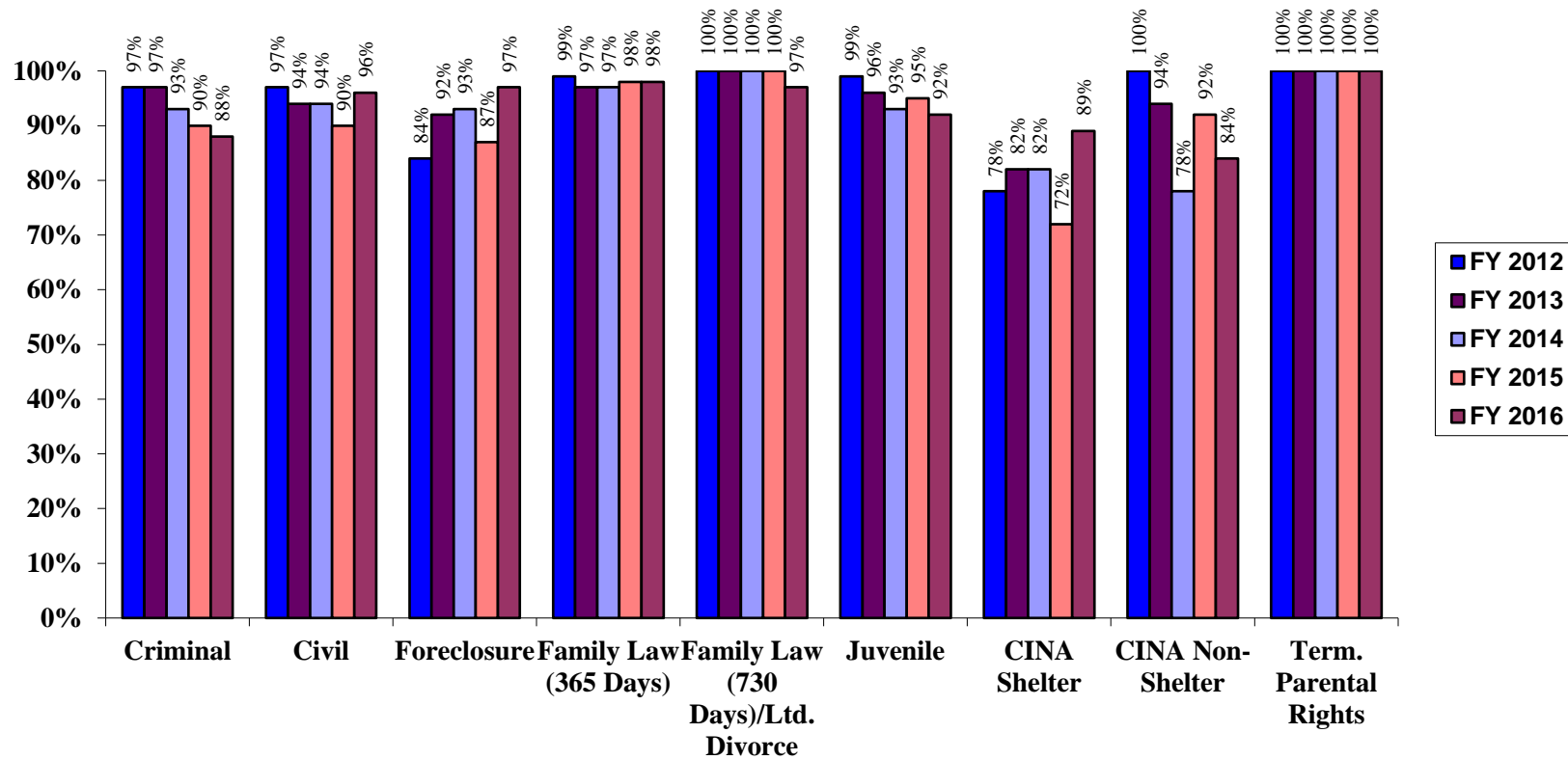
Percent of Cases Terminated Within Standard by Case Type, Fiscal Years 2012-2016
St. Mary's County (Unweighted)



	Criminal	Civil	Foreclosure*	Family Law (365 Days)	FL (730 Days) / Ltd. Divorce**	Juvenile	CINA Shelter	CINA Non-Shelter	Term. Parental Rights
FY 2012	92%	94%	65%	89%	99%	92%	80%	N/A	58%
FY 2013	85%	89%	86%	89%	98%	85%	43%	100%	41%
FY 2014	87%	87%	84%	90%	91%	87%	75%	0%	43%
FY 2015	85%	87%	83%	91%	90%	86%	69%	N/A	60%
FY 2016	86%	94%	97%	93%	91%	87%	79%	N/A	86%
FY 12 -16 Change	-6%	0%	32%	4%	-8%	-5%	-1%	N/A	28%

*The 730-Day time standard goal became applicable to Foreclosure cases only beginning with the Fiscal Year 2016 Assessment.**The 730-Day time standard goal became applicable to Limited Divorce cases only beginning with the Fiscal Year 2014 Assessment.

Percent of Cases Terminated Within Standard by Case Type, Fiscal Years 2012-2016
Washington County (Unweighted)



	Criminal	Civil	Foreclosure*	Family Law (365 Days)	FL (730 Days) / Ltd. Divorce**	Juvenile	CINA Shelter	CINA Non-Shelter	Term. Parental Rights
FY 2012	97%	97%	84%	99%	100%	99%	78%	100%	100%
FY 2013	97%	94%	92%	97%	100%	96%	82%	94%	100%
FY 2014	93%	94%	93%	97%	100%	93%	82%	78%	100%
FY 2015	90%	90%	87%	98%	100%	95%	72%	92%	100%
FY 2016	88%	96%	97%	98%	97%	92%	89%	84%	100%
FY 12 -16 Change	-9%	-1%	13%	-1%	-3%	-7%	11%	-16%	0%

*The 730-Day time standard goal became applicable to Foreclosure cases **only** beginning with the Fiscal Year 2016 Assessment.**The 730-Day time standard goal became applicable to Limited Divorce cases **only** beginning with the Fiscal Year 2014 Assessment.